



MODULAR RAMP & STEP SPECIALISTS

TEL: **01424 714 646**
EMAIL: **SALES@RAPIDRAMP.CO.UK**

WWW.RAPIDRAMP.CO.UK

CONTENTS

| | |
|----|---|
| 5 | WHAT IS A MODULAR RAMP? |
| 6 | THE STANDARD RAMP |
| 7 | THE FULLY COMPLIANT RAMP |
| 8 | RAMP COMPONENT FEATURES & OPTIONAL EXTRAS |
| 11 | RAMP COMPONENT SIZES, LENGTHS AND WIDTHS |
| 15 | NEAT EDGE RUBBER RAMPS |
| 16 | WHICH SERVICE PACKAGE IS RIGHT FOR YOU? |
| 17 | RAPID RAMP RECYCLING SCHEME |
| 18 | CASE STUDY: ST PAUL'S CATHEDRAL |
| 20 | CASE STUDY: COVID-19 TESTING SITE, ACCRINGTON |
| 22 | CASE STUDY: WOODTHORPE SCHOOL |
| 24 | CASE STUDY: BECKENHAM, GREATER LONDON |
| 26 | CASE STUDY: CHELMSFORD WASTE PIPE |
| 28 | FAQs |

HOW TO CONTACT US

TEL: **01424 714646**
 EMAIL: **SALES@RAPIDRAMP.CO.UK**
 WEB: **RAPIDRAMP.CO.UK**

Hours:
 Open 8am - 5pm, Monday to Friday

Address:
 10 Menzies Road, Ponswood Industrial Estate
 St Leonards on Sea, East Sussex TN38 9BB



ABOUT US

WE ARE THE **EXPERTS** IN MODULAR RAMPS AND STEPS

We are a leading UK modular ramp and step manufacturer, offering a nationwide supply, rental and installation service.

Both access products are designed and made in Britain. Plus, our in-house team manage the whole process from quotation, site survey right through to installation.



WHY CHOOSE RAPID RAMP?

WE PROVIDE A **COMPLETE SERVICE** FROM START TO FINISH

OUR SERVICE INCLUDES:

- Site survey (if applicable)
- Bespoke CAD & technical drawings
- Quotation
- Supply
- Installation
- Ramp rental package available



RAPID RAMP SALES TEAM
 TEL: **01424 714 646**
 EMAIL: **SALES@RAPIDRAMP.CO.UK**

WWW.RAPIDRAMP.CO.UK



IN-HOUSE EXPERTISE

A COMPANY IS ONLY AS GOOD AS IT'S PEOPLE

A WEALTH OF KNOWLEDGE IS AT YOUR DISPOSAL.

CALL US FOR:

- Quotation & site survey requests
- Technical advice
- Guidance on the Building Regulations – Documents M and K

HOW TO CONTACT US

TEL: **01424 714646**
EMAIL: **SALES@RAPIDRAMP.CO.UK**

Hours:

Open 8am - 5pm, Monday to Friday

Address:

10 Menzies Road, Ponswood Industrial Estate
St Leonards on Sea, East Sussex TN38 9BB



SALES TEAM

A member of our team will be happy to advise you and answer any questions.



TECHNICAL CONSULTANTS

Our consultants have in-depth knowledge of the building regulations, both for access to dwellings and public buildings.



SITE SURVEYOR

The surveyor meets on-site to discuss your access needs and to take the necessary measurements and photos (by appointment only).



DESIGNER

With an architectural background, the designer creates bespoke technical and 3D CAD drawings for each quotation.



INSTALLERS

Fully DBS (formerly CRB) checked with CSCS cards and health & safety accreditations provided by Constructionline.



WHICH MODULAR RAMP IS RIGHT FOR YOU?

Rapid Ramp is a fully adjustable modular wheelchair ramp, constructed from galvanised steel components that are bolted together.

Modular components are available from stock in various sizes, lengths, and widths to suit different areas and applications. Plus, platforms can be designed in both straight-through and turning configurations.

BENEFITS:

- Rapid design and installation
- Made of durable steel with galvanised walkway and powder coated handrails
- Reusable components
- 3-year guarantee, 25+ year life span
- Suitable for all types of buildings, including permanent, temporary, and portable.
- Fully adjustable, can be adapted, modified, and changed.
- Can easily be removed, leaving an area in its original condition
- UK wide service

WHAT ARE MY OPTIONS?

Two options are available in different lengths and widths, and extras can be added.

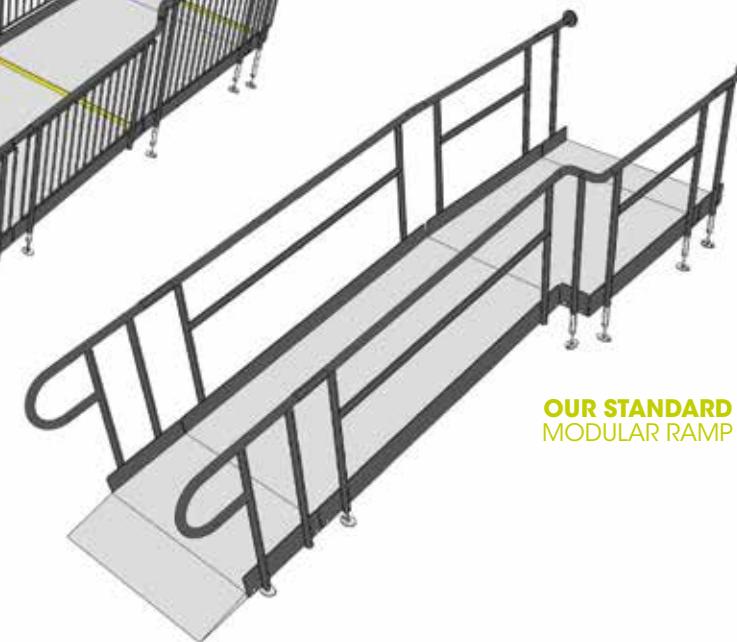
OPTIONS:

- The Standard Modular Ramp
- The Fully Compliant Modular Ramp

OUR FULLY COMPLIANT MODULAR RAMP



OUR STANDARD MODULAR RAMP





STANDARD RAMP SYSTEM WITH
EXTRAS: STEP & GATE UNIT.
RESIDENTIAL PROJECT –
BECKENHAM, GREATER
LONDON.

OUR STANDARD MODULAR RAMP

This ramp system is more often specified for residential applications as a low-risk access solution.

However, the system can also be suitable for schools and public buildings with additional safety features such as infill handrails.

WIDTHS AVAILABLE:

- **900mm** – the minimum width required for dwellings under Document M, section 6 of Building Regulations.
- **1000mm** – The standard width for dwellings.
- **1200mm** – The extra wide ramp.
- **1500mm** – The recommended width for public use.
- Bespoke sizes are available

GRADIENT:

- Ramps for residential use must have a gradient no more than 1:12 (4.7 degrees).



FULLY COMPLIANT RAMP WITH
EXTRA: UNDERSIDE MESH
HERITAGE PROJECT – ST PAUL'S
CATHEDRAL, LONDON

OUR FULLY COMPLIANT MODULAR RAMP

This system fully adheres to Documents M and K of the Building Regulations and is highly recommended for schools and public buildings.

All standard and compliant features must be included when applicable.

WHAT IS COVERED IN THE DOCUMENTS:

- **Document M** – Gives practical guidance to access and use of buildings.
- **Document K** – Protection from falling (Handrails).

WIDTH AND GRADIENT:

- The ramp must achieve a minimum width of 1500mm and have a 1:15 gradient (3.7 degrees).



OUR STANDARD & FULLY COMPLIANT RAMPS

COMPONENT FEATURES & OPTIONAL EXTRAS

Depending on your chosen ramp system, some features come as standard and some appear as optional extras.

STANDARD HANDRAIL

Designed to provide stability and support. These are coated with thermosetting powder to provide a non-conductive, non-slip and scratch resistant surface.



STANDARD RAMP
Standard

FULLY COMPLIANT RAMP
Standard

INFILL HANDRAIL

This product prevents users from climbing or falling through gaps. It is often specified for schools and public buildings.



STANDARD RAMP
Optional extra

FULLY COMPLIANT RAMP
Standard

TROMBONE ENDS

These are added to the ends of a Rapid Ramp to prevent clothes from snagging.



STANDARD RAMP
Standard

FULLY COMPLIANT RAMP
Standard

1100MM HIGH RAIL

The 1100mm high rail features vertical rails and is suitable for level landings in a commercial application.



STANDARD RAMP
Optional extra

FULLY COMPLIANT RAMP
Standard

LOWER INTERMEDIATE HANDRAIL

This handrail is designed to be used by young children and wheelchair users. It should be 600mm from main handrail.

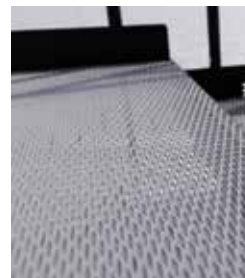


STANDARD RAMP
Optional extra

FULLY COMPLIANT RAMP
Optional extra

MESH PLATFORM

This self-draining mesh platform allows water to pass through rather than puddle on the surface and potentially freeze.



STANDARD RAMP
Standard

FULLY COMPLIANT RAMP
Standard

GRP PLATFORM

A slip-resistant and non-corrosive surface that is ideal for areas with high footfall such as schools and public spaces.



STANDARD RAMP
Optional extra

FULLY COMPLIANT RAMP
Optional extra

SAFETREAD RUBBER SURFACE

This is a soft, slip-resistant surface that reduces the impact of falls.

The product is made from the same materials used in soft play areas and available in a range of colours.



STANDARD RAMP
Optional extra

FULLY COMPLIANT RAMP
Optional extra

YELLOW TREAD

Yellow tread can be added to help those with impaired vision identify a change in level.



STANDARD RAMP
Optional extra

FULLY COMPLIANT RAMP
Standard

GATES UNIT

A gate unit can be attached to the side of a platform, 1200mm or wider.



STANDARD RAMP
Optional extra

FULLY COMPLIANT RAMP
Optional extra

TELESCOPIC LEGS

These can be adjusted to accommodate different threshold heights.



STANDARD RAMP
Standard

FULLY COMPLIANT RAMP
Standard

POWER COATED BLACK

Ramps are powder coated black to create a durable finish that is tougher than conventional paint.



STANDARD RAMP
Standard

Customisation available

FULLY COMPLIANT RAMP
Standard

Customisation available

STANDARD UNDERSIDE MESH

This mesh is designed to prevent individuals from gaining access to the underneath of the ramp. It is often specified for schools and public buildings.



STANDARD RAMP
Optional extra

FULLY COMPLIANT RAMP
Optional extra

FINE UNDERSIDE MESH

This mesh has 20mm x 20mm small square holes, designed to stop litter from blowing underneath the ramp.



STANDARD RAMP
Optional extra

FULLY COMPLIANT RAMP
Optional extra

ACCESS HATCH

A hatch opens allowing a person access to the underground services.



STANDARD RAMP
Optional extra

FULLY COMPLIANT RAMP
Optional extra

STEP UNIT

A step unit is an ideal addition to any ramp installation, providing the access needed for able-bodied users. They can also be standalone units, independent of the ramp system.



Units can fully comply with Documents M and K of the Building Regulations.

STANDARD RAMP
Optional extra

FULLY COMPLIANT RAMP
Optional extra

OUR STANDARD & FULLY COMPLIANT RAMPS
COMPONENT SIZES, LENGTHS AND WIDTHS

PLATFORM SECTIONS (WITH OR WITHOUT GRP)

| | | LENGTH | | | | | |
|-------|--------|--------|-------|--------|--------|--------|--------|
| | | 300mm | 500mm | 1000mm | 1200mm | 1500mm | 2000mm |
| WIDTH | 900mm | ✓ | ✓ | ✓ | ✓ | ✓ | ✓ |
| | 1000mm | ✓ | ✓ | ✓ | ✓ | ✓ | ✓ |
| | 1200mm | ✓ | ✓ | ✓ | ✓ | ✓ | ✓ |
| | 1500mm | ✓ | ✓ | ✓ | ✓ | ✓ | ✗ |

ANGLED PLATFORM EXTENSIONS (WITH OR WITHOUT GRP)

| | | LENGTH | | ANGLE | |
|-------|--------|--------|-----|-------|-----|
| | | 300mm | 15° | 30° | 45° |
| WIDTH | 900mm | ✓ | ✓ | ✓ | ✓ |
| | 1000mm | ✓ | ✓ | ✓ | ✓ |
| | 1200mm | ✓ | ✓ | ✓ | ✓ |
| | 1500mm | ✓ | ✓ | ✓ | ✓ |

TOE PLATES (WITH OR WITHOUT GRP)

| | | LENGTH |
|-------|--------|--------|
| | | 300mm |
| WIDTH | 900mm | ✓ |
| | 1000mm | ✓ |
| | 1200mm | ✓ |
| | 1500mm | ✓ |



HATCH SECTIONS

| | | LENGTH |
|-------|--------|--------|
| | | 500mm |
| WIDTH | 1000mm | ✓ |
| | 1200mm | ✓ |
| | 1500mm | ✓ |



HANDRAIL RANGE



STANDARD HANDRAIL



INFILL HANDRAIL



1100MM HIGH HANDRAIL



STANDARD TERMINATION END



INFILL TERMINATION ENDS



STANDARD STEP HANDRAIL



INFILL STEP HANDRAIL

RAMPED HANDRAIL

| | LENGTH | | | | | |
|----------------------------|--------|-------|--------|--------|--------|--------|
| | 300mm | 500mm | 1000mm | 1200mm | 1500mm | 2000mm |
| STANDARD (LEFT & RIGHT) | ✓ | ✓ | ✓ | ✓ | ✓ | ✓ |
| INFILL (LEFT & RIGHT) | ✓ | ✓ | ✓ | ✓ | ✓ | ✗ |
| 1100mm HIGH (LEFT & RIGHT) | ✓ | ✓ | ✓ | ✓ | ✓ | ✗ |

VERTICAL HANDRAIL

| | LENGTH | | | | | |
|----------------------------|--------|-------|-------|--------|--------|--------|
| | 200mm | 300mm | 500mm | 1000mm | 1200mm | 1500mm |
| STANDARD (LEFT & RIGHT) | ✓ | ✓ | ✓ | ✓ | ✓ | ✓ |
| INFILL (LEFT & RIGHT) | ✓ | ✓ | ✓ | ✓ | ✓ | ✓ |
| 1100mm HIGH (LEFT & RIGHT) | ✗ | ✓ | ✓ | ✓ | ✓ | ✓ |

HANDRAIL TERMINATION RAIL INFILL

| | LENGTH |
|---|--------|
| | 500mm |
| HANDRAIL TERMINATION RAIL INFILL (LEFT & RIGHT) | ✓ |

HANDRAIL TERMINATION

| | LENGTH |
|-----------------------|--------|
| | 300mm |
| TROMBONE END | ✓ |
| REVERSE TROMBONE END | ✓ |
| VERTICAL TROMBONE END | ✓ |

STEP HANDRAIL

| | STANDARD STEP HANDRAIL | INFILL STEP HANDRAIL |
|------------------------------------|------------------------|----------------------|
| STANDARD HANDRAIL 1 (LEFT & RIGHT) | ✓ | ✓ |
| STANDARD HANDRAIL 2 (LEFT & RIGHT) | ✓ | ✓ |

BRACKETS & CONNECTORS

| | |
|-----------------------|---|
| ANGLED CONNECTOR | ✓ |
| CORNER CONNECTOR | ✓ |
| STRAIGHT CONNECTOR | ✓ |
| WALL CONNECTOR | ✓ |
| UNIVERSAL CONNECTOR | ✓ |
| LEG BRACKET | ✓ |
| LEG BRACKET 150 X 50 | ✓ |
| THREADED FOOT BRACKET | ✓ |

LEG ALLEN BOLT

| | |
|----------------|---|
| LEG ALLEN BOLT | ✓ |
|----------------|---|

HANDRAIL END CAP

| | |
|------------------|---|
| HANDRAIL END CAP | ✓ |
|------------------|---|

UNIVERSAL GATE UNIT

| | |
|---------------------|---|
| UNIVERSAL GATE UNIT | ✓ |
|---------------------|---|



STEP KICK PLATE

| | LENGTH | | | |
|-----------------|--------|-------|--------|--------|
| | 900mm | 1000m | 1200mm | 1500mm |
| STEP KICK PLATE | ✓ | ✓ | ✓ | ✓ |

KERB

| | LENGTH | | | | | |
|------|--------|-------|-------|--------|--------|--------|
| | 200mm | 300mm | 500mm | 1000mm | 1200mm | 1500mm |
| KERB | ✓ | ✓ | ✓ | ✓ | ✓ | ✓ |

LEG

| | |
|--------------------------------------|---|
| LEG 500 WITH FOOT (PS UP TO 400mm) | ✓ |
| LEG 800 WITH FOOT (PS UP TO 700mm) | ✓ |
| LEG 1200 WITH FOOT (PS UP TO 1100mm) | ✓ |
| LEG 1500 WITH FOOT (PS UP TO 1500mm) | ✓ |
| LEG 1800 WITH FOOT (PS UP TO 1700mm) | ✓ |

MIDRAIL BRACKET

| | |
|-----------------|---|
| MIDRAIL BRACKET | ✓ |
|-----------------|---|

HANDRAIL

| | LENGTH | |
|---------------|--------|--------|
| | 1500mm | 3000mm |
| HANDRAIL TUBE | ✓ | ✓ |



NEAT EDGE
RUBBER RAMPS

This rubber ramp is designed to overcome small internal rises and thresholds that do not warrant the use of a conventional modular ramp.

We price on application and ask that you include photos and measurements within your enquiry.

Please note that site surveys are unavailable for this product.

FEATURES

- 1000kg Capacity
- Ribbed slip-resistant surface
- Allows doors to open and close when in position

SQUARE EDGE

| HEIGHTS | | | | | |
|---------|------|------|------|------|------|
| 12mm | 20mm | 30mm | 40mm | 50mm | 60mm |

ROUND EDGE

| HEIGHTS | | | | |
|---------|------|------|------|-------|
| 63.5mm | 50mm | 90mm | 75mm | 100mm |

WHICH **SERVICE** PACKAGE IS RIGHT FOR **YOU?**

A PRODUCT IS ONLY AS GOOD AS ITS SERVICE.

We offer three varied service packages to suit different specifiers' access needs.

Within your enquiry, please do indicate which service package is required.



SUPPLY & INSTALLATION

An all-inclusive, stress-free option which we manage in-house with our own installation teams across the UK.

This package includes a site survey (if applicable), quotation, CAD and technical drawing, supply, and installation.



SUPPLY ONLY

No site survey is included, but a quotation with CAD and technical drawing are provided with a copy of our installation video.

As a manufacturer and stockist, you will find our delivery times are much faster!



RENTAL PACKAGE

Temporary Rapid Ramps and steps are available for long or short term hire.

Once no longer needed, the system will be removed, leaving the area in its original condition.

Minimum hire period applies and the rental duration is flexible (more details available on application).

"Rapid Ramps stood up to their name. We engaged them at the last minute and they performed well. They delivered on time and on budget."

Main Contractor & Site Agent, Brighton Main Line Improvement Project

RAPID RAMP **RECYCLING** SCHEME

Rapid Ramp is dedicated in reducing the impact our products, services and activities have on the environment.

WHAT IS THE RAMP RECYCLING SCHEME?

An in-house initiative designed to increase recycling efforts and reduces our carbon footprint.

WHO IS ELIGIBLE FOR THE SCHEME?

The scheme is suitable for customers with a recurring need for ramps and steps, and is particularly attractive to local authorities, in helping to reduce capital expenditure.

If you haven't previously purchased from us, we cannot always guarantee recycled stock will be available within the first project undertaken.

WHAT HAPPENS TO RECYCLED RAMP THAT ARE NO LONGER NEEDED?

The ramps & steps are removed and stored in our warehouse, ready to be reused on other projects.

The scheme creates a win-win situation for specifiers and the environment, as components can be reused.

SO WHY RECYCLE?

- ✓ Substantial savings will be made by a reduction of labour time (over traditional building methods) and product reusability.
- ✓ Recycled ramps are stored at our premises for no additional cost. We take care of the warehousing, stock management and stock rotation for you.
- ✓ Recycled ramps remain a fully Doc M compliant solution.





CASE STUDY: **ST PAUL'S CATHEDRAL**

DDA IMPROVEMENTS WORKS - SOUTH TRANSEPT

Application: Commercial

Location: London

System: Fully Compliant Ramp System

Service Package: Supply & Install

"Thank you to the install team for the good progress on the temporary ramp, most appreciated!"

Works Manager

BACKGROUND: DDA improvement works were scheduled to start with a permanent masonry ramp from the north entrance.

REQUIREMENT: Dismantle the temporary north ramp and reuse components in a new modular ramp from the south entrance.

The new south ramp will provide short-term wheelchair access throughout the building works

ADDITIONAL INFORMATION: 3D and technical drawings were designed by our specialist CAD designer in-house.

The appropriate conservation and planning authorities were consulted throughout the design period.

Discussions included assessing how the ramp would be supported around the existing paving features.

END RESULT: A fully compliant Rapid Ramp was installed from the south transept entrance.

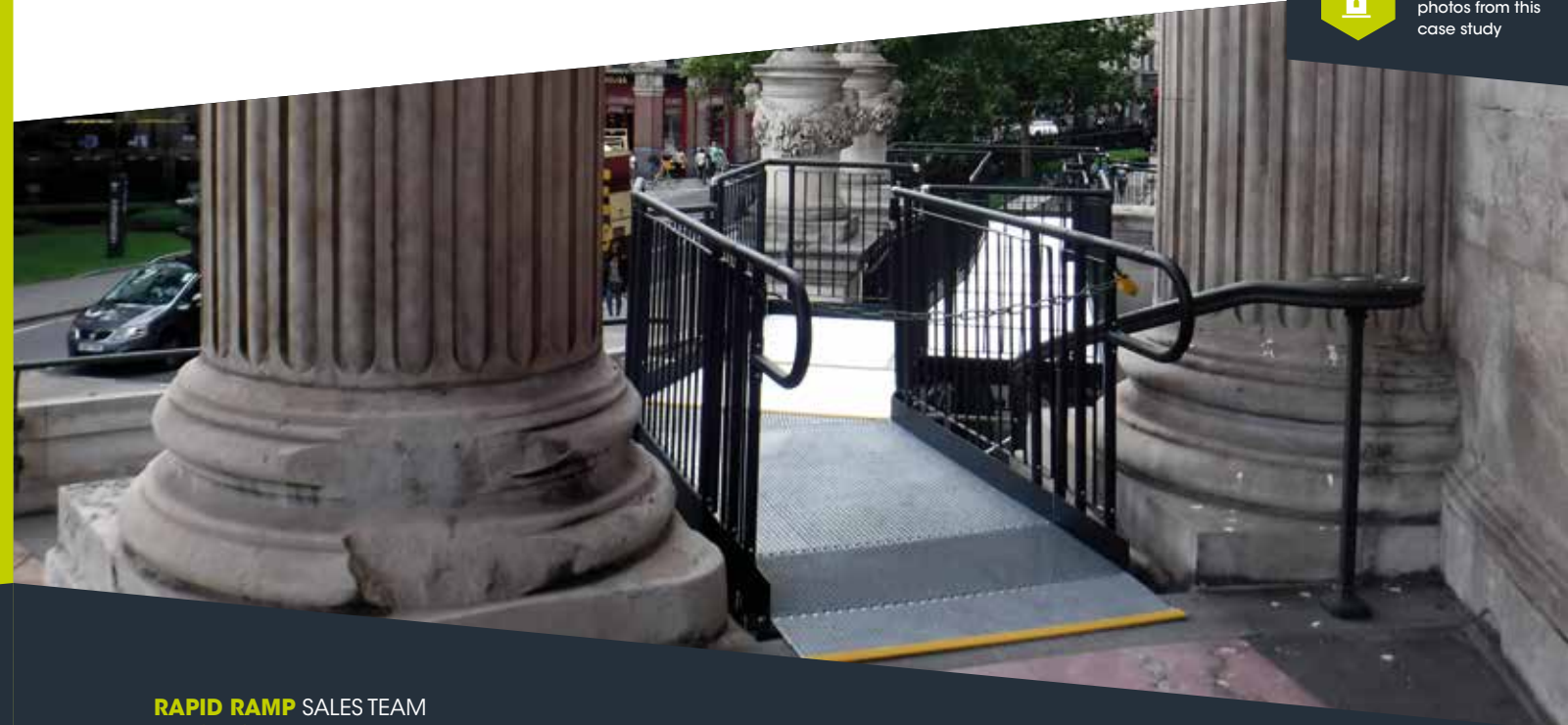
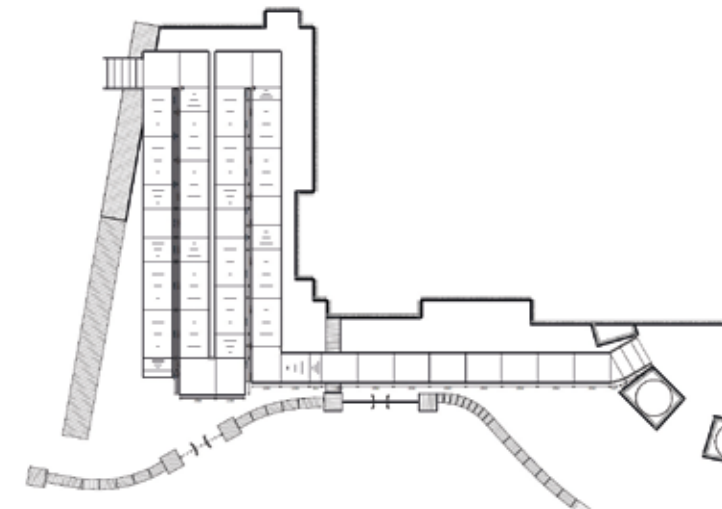
The ramp feet were not bolted down. Instead, they were connected by cross-braces to ensure rigidity. This prevention was taken to minimise any damage being caused to the site's cobbled ground.

FEATURES INCLUDED:

- **Infill Handrail** - prevents users from climbing or falling through gaps.
- **Yellow Tread** - A safety feature designed to help those with impaired vision identify the nose of the ramp or step. Additionally, it helps users distinguish any level changes.
- **Trombone Ends** - added to the ends of a Rapid Ramp to prevent clothes catching.
- **Mesh Platform** - the self-draining mesh allows water to pass through rather than collect on the surface.
- **Rest Platform** - a rest platform at 5 metres is required to allow the user to pause.
- **1100mm High Rail** - these handrails attach to any level sections.
- **Continuous Handrail** - ensures the users always have a support to hold onto.

EXTRA FEATURE INCLUDED:

- **Standard Underside Mesh** - designed to prevent users from gaining access underneath the ramp. It is often specified for schools and public buildings.



Visit our website for additional photos from this case study



CASE STUDY: **COVID-19 TESTING SITE, ACCRINGTON**

ACCESSIBLE CABINS FOR LOCAL TESTING

Application: Healthcare

Location: Accrington, Hyndburn

System: Fully Compliant Ramp
Standard Step Unit

Service package: Supply & Install

BACKGROUND: The facility will open at the Eastgate Car Park as part of the Government strategy to improve localised access to coronavirus tests.

REQUIREMENT: Fully compliant ramps and steps in double quick time to allow the site to open before the end of the week.

ADDITIONAL INFORMATION: A few hours after receiving the enquiry and measurements, CAD/technical drawings and a quotation were drawn up and sent to the client.

END RESULT: The measurements were received Monday evening, and all components were picked and packed Tuesday morning and delivered to site for Wednesday morning.

The systems were fitted by our installation team Wednesday, ready for use by Thursday, midday.

We were true to our name, delivering the project rapidly in less than a week. This was achieved with our in-house team, which included a site surveyor, designer, and installers.

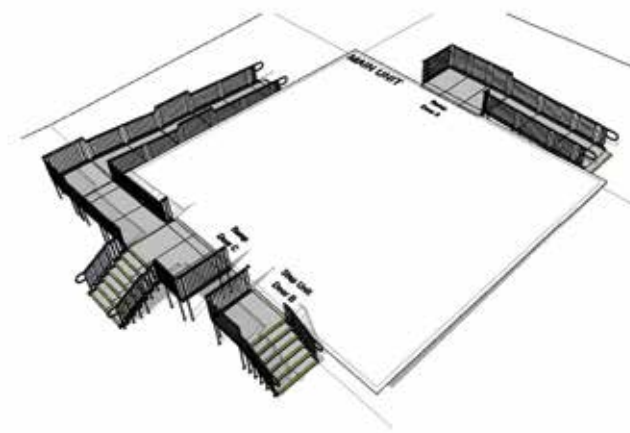
All components were available from stock and ready for installation as soon as required.

FEATURES INCLUDED:

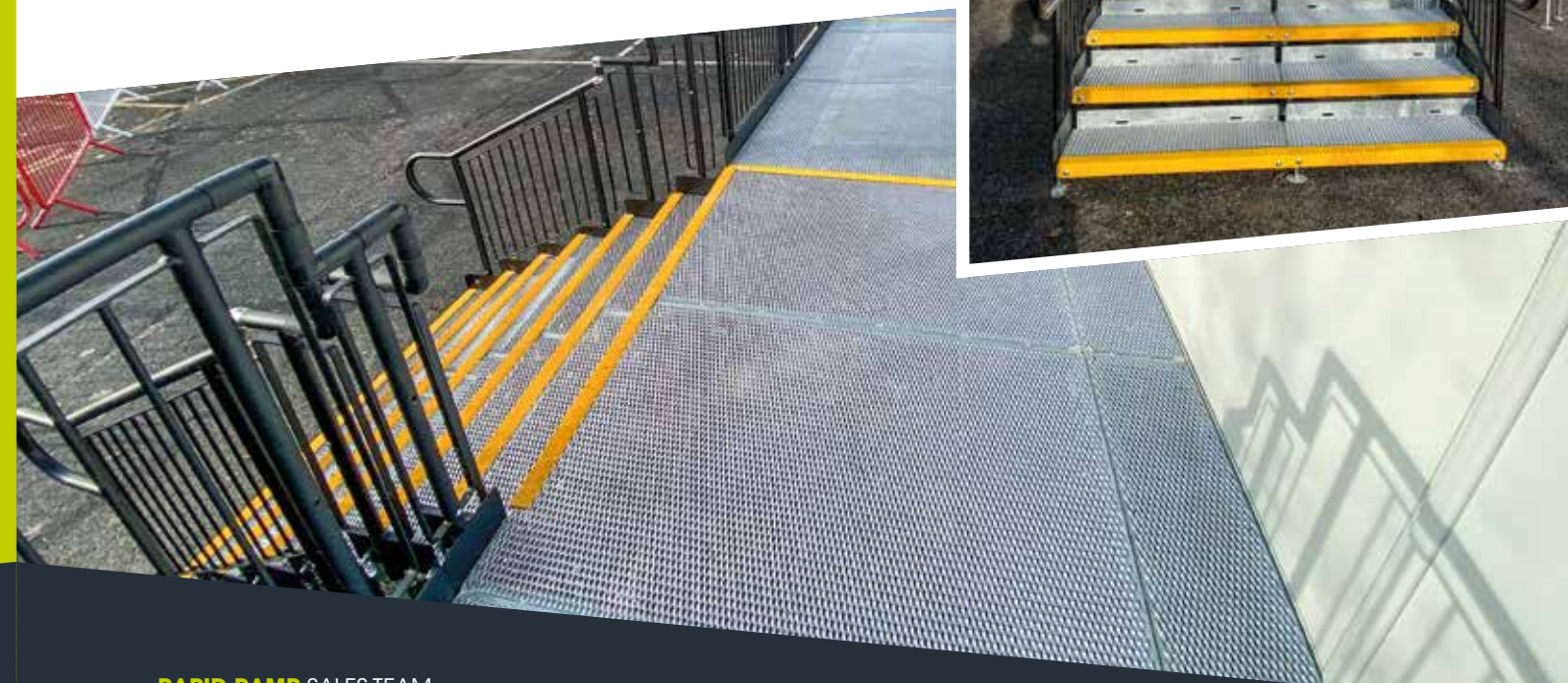
- **Infill Handrail** - this product prevents users from climbing or falling through gaps.
- **Yellow Tread** - the product can be added to help those with impaired vision identify a change in level.
- **Trombone Ends** - these are added to the ends of a Rapid Ramp to prevent clothes catching.
- **Mesh Platform** - this self-draining mesh platform allows water to pass through rather than puddle on the surface and potentially freeze.
- **Rest Platform** - a rest platform at 5 metres is required to allow the user to pause.
- **1100mm High Rail** - these handrails attach to any level sections.
- **Continuous Handrail** - this handrail system ensures users always have support to hold onto.

EXTRA FEATURE INCLUDED:

- **Standard Underside Mesh** - an ideal addition to any ramp installation, providing the access needed for able-bodied users. They can also be stand-alone units, independent of the Rapid Ramp System.



Visit our website for additional photos from this case study





CASE STUDY: **WOODTHORPE SCHOOL**

WHEELCHAIR ACCESS TO THE PLAYGROUND

Application: Education

Location: Nottingham, Midlands

System: Standard Ramp System

Service Package: Supply & Install

REQUIREMENT: Steps were hindering users with mobility impairments access to the playground.

A ramp was required to overcome this physical barrier.

ADDITIONAL INFORMATION: CAD and technical drawings were designed by our specialist CAD designer in-house.

END RESULT: A Rapid Ramp was fixed against the wall as shown.

The install was completed within a three-day turnaround time.

"I am really pleased with the work - they have done a brilliant job. Thanks a lot Rapid Ramp!"

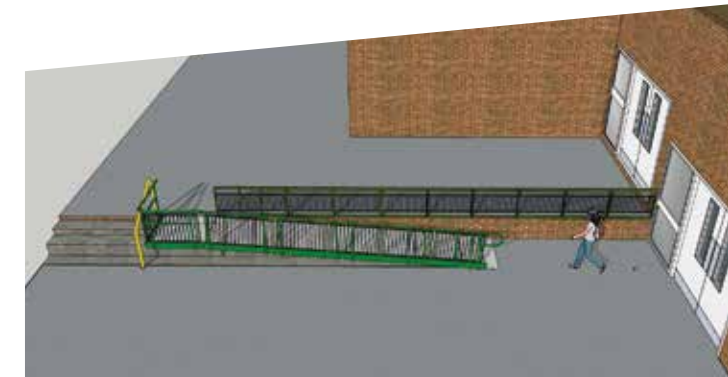
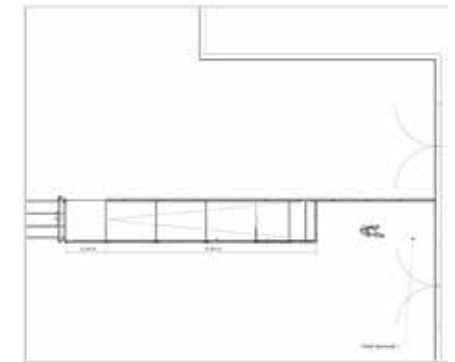
Head Teacher

FEATURES INCLUDED:

- **Mesh Platform** - self-draining mesh allowing water to pass through rather than collect on the surface.
- **Trombone Ends** - added to the ends of a Rapid Ramp to prevent clothes catching.
- **Telescopic Legs** - these can be adjusted to accommodate different threshold heights.
- **Continuous Handrail** - ensures the users always have a support to hold onto.

EXTRA FEATURES INCLUDED:

- **Infill Handrail** - prevents users from climbing or falling through gaps.
- **Yellow Tread** - a safety feature designed to help those with impaired vision identify the nose of the ramp and helps users distinguish any level changes.
- **Fine Underside Mesh** - this mesh has 20mm x 20mm small square holes, designed to stop rubbish from blowing underneath the ramp.
- **A bespoke Infill Handrail** was additionally installed along the wall.



Fine Underside Mesh



View additional photos from the case study via our website



CASE STUDY: **BECKENHAM, GREATER LONDON**

A SAFE & SIMPLE SOLUTION FOR A WEIGHTY PROBLEM

Application: Residential

Location: Beckenham, Greater London

System: Standard Ramp System

Service Package: Supply & Install

"It was handy that Rapid Ramp could deal with the whole process and the 3D drawing really helped me and the client. As usual, a very good job from the team!"

Private Occupational Therapist

REQUIREMENT: An occupational therapist enquired about a heavy-duty wheelchair ramp capable of supporting the weight of a powerchair.

Additionally, to avoid affecting the house's future guide price, the family requested an easily removable option.

ADDITIONAL INFORMATION: We reassured the OT that a Rapid Ramp has a safe loading capacity of 1,000kgs when installed correctly, so would effectively support the weight of the powerchair.

CAD and technical drawings were drawn up, based off measurements and photos taken by our surveyor.

They are designed to help customers visualise how a ramp would appear in situ.

The OT used these drawings when discussing our modular solution with the homeowner and his family.

END RESULT: A Rapid Ramp with step and gate unit was installed within a few hours.

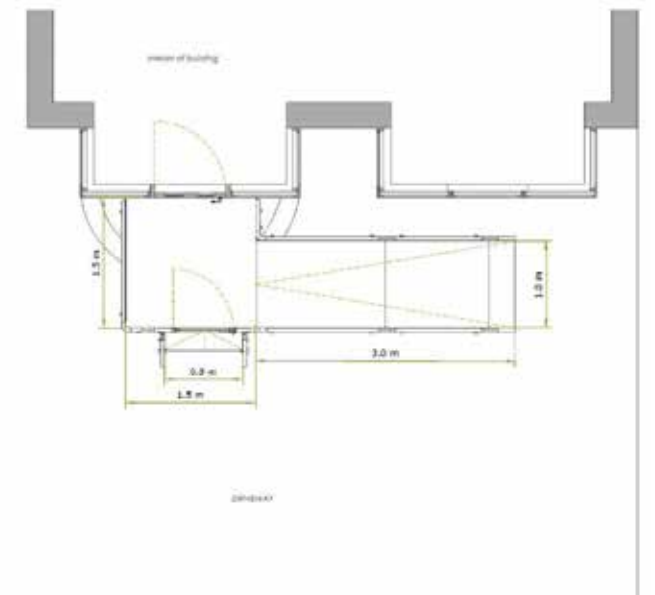
FEATURES INCLUDED:

- **Trombone Ends** - added to the ends of a Rapid Ramp to prevent clothes catching.
- **Telescopic Legs** - these can be adjusted to accommodate different threshold heights.
- **Standard Handrail** - designed to be grasped by the hand, to provide stability or support.
- **Mesh Platform** - self-draining mesh allows water to pass through rather than collect on the surface.

EXTRA FEATURE INCLUDED:

- **Gate & Step Unit** - an ideal addition to any ramp installation, providing the access needed for able-bodied users. They can also be standalone units, independent of the Rapid Ramp System.

RAMP REMOVAL: If needed in the future, this can easily be done without leaving an impact to the property.



Visit our website for additional photos from this case study





CASE STUDY: **CHELMSFORD WASTE PIPE**

OVERCOMING AN ACCESS CHALLENGE

Application: Public Space

Location: Chelmsford

System: Standard Ramp System

Service Package: Rapid Rental

REQUIREMENT: Temporary pipes were scheduled to be installed above ground whilst major repairs occurred underground.

To prevent the pipes from blocking access routes to a public park and housing estate, temporary ramps were required.

ADDITIONAL INFORMATION: CAD and technical drawings were designed by our expert CAD designer in-house to the local authorities' specification.

Drawings help customers to visualise how a ramp would appear in situ.

END RESULT: Three rental ramps were installed prior to the repairs, and the pipes were moved into place underneath.

Our modular system allowed the public access routes to stay open throughout the works.

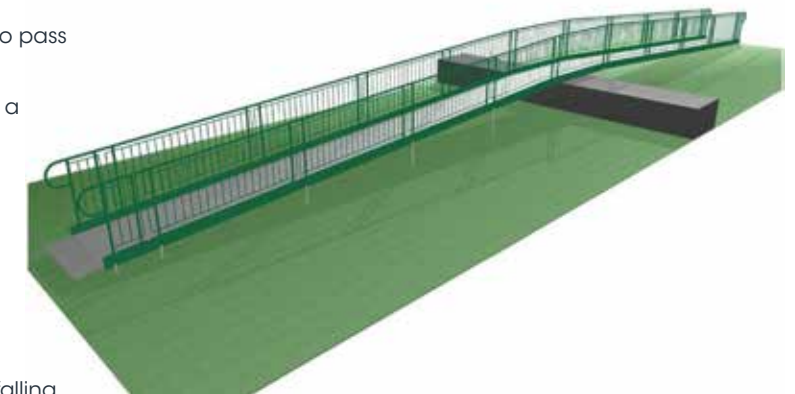
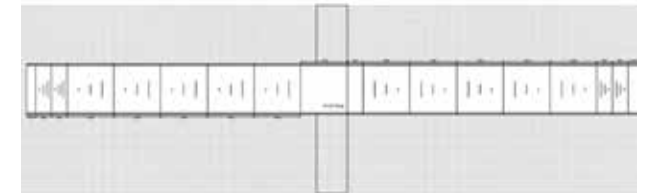
Once no longer needed, the ramps were removed with ease, leaving the site in its original condition.

FEATURES INCLUDED:

- **Mesh Platform** - self-draining mesh allows water to pass through rather than collect on the surface.
- **Trombone Ends** - these are added to the ends of a Rapid Ramp to prevent clothes catching.
- **Telescopic Legs** - these can be adjusted to accommodate different threshold heights.
- **Continuous Handrail** - this handrail system ensures users always have support to hold onto.

EXTRA INCLUDED:

- **Infill Handrails** - prevents users from climbing or falling through gaps.
- **Yellow Tread** - this is a safety feature designed to help those with impaired vision identify the nose of the ramp. Additionally, it helps users distinguish any level changes.



View additional
case study
photos via
our website

WE'RE HERE TO HELP?

QUESTIONS AND ANSWERS

Q. How big will the ramp be?

A. It will be designed to have a safe, easy to use gradient recommended by the Building Regulations.

Q. How long will it take to install the ramp?

A. It generally will take a day to complete unless there is extensive work needed.

Q. What happens if there is an issue with the access product?

A. Products are guaranteed for three years. We have been installing ramps successfully for more than 20 years and would expect a 25+ year life span.

Q. What maintenance will I have to do?

A. Very little maintenance is required. We recommend that the walkway be swept to keep dirt away and suggest wiping down the handrails with soapy water twice a year.

Q. What are your lead times?

A. This is dependent on the size of the project, however generally lead times are between 2-4 weeks from point of order. This is subject to change.

Q. How do I book a site survey?

A. Contact our sales team

If you have any other questions please do not hesitate to contact our in-house sales team

HOW TO CONTACT US

TEL: **01424 714646**
EMAIL: **SALES@RAPIDRAMP.CO.UK**
WEB: **RAPIDRAMP.CO.UK**

Hours:

Open 8am - 5pm, Monday to Friday

Address:

10 Menzies Road, Ponswood Industrial Estate
St Leonards on Sea, East Sussex TN38 9BB



THE EXPERTS IN MODULAR RAMPS