



CASE STUDY: **Harrington Primary School**

A NON-COMBUSTIBLE STEEL RAMP AND STEPS READY FOR SEPTEMBER

REQUIREMENT: The main school building was destroyed in a fire. A temporary building with modular access was required before the children returned to school in September.

Application: Education

Location: Nottingham, Midlands

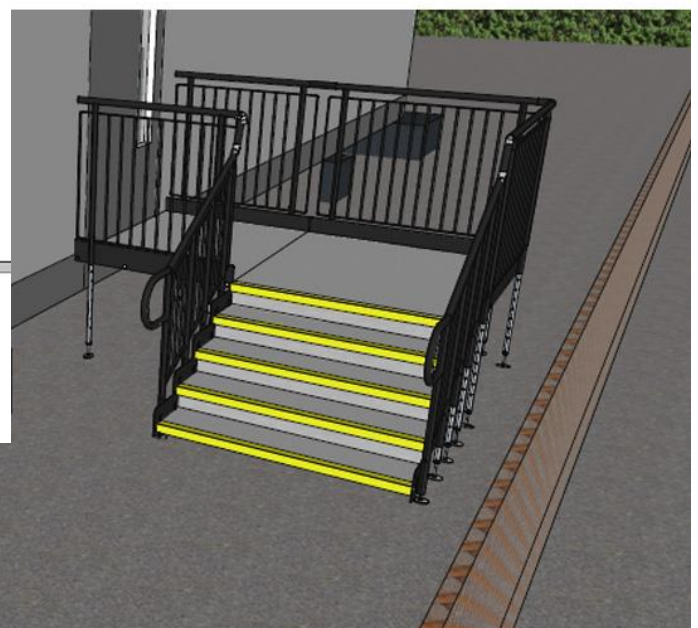
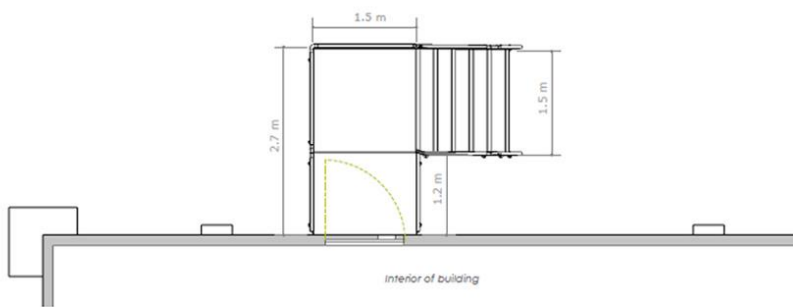
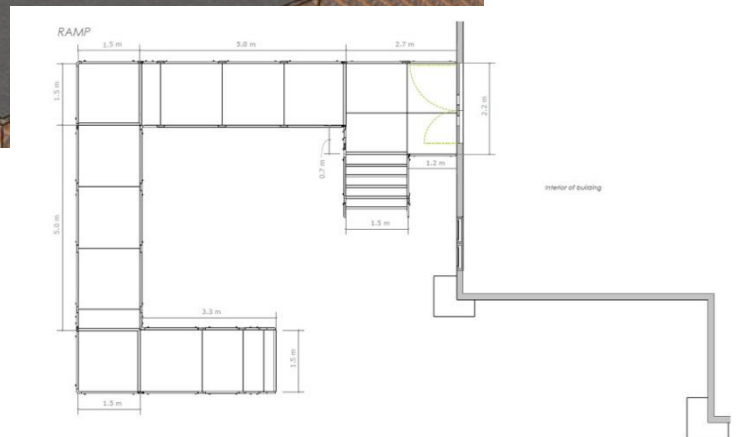
System: Fully Compliant Ramp

Service Package: Ramp Rental



ADDITIONAL INFORMATION: A steel wheelchair ramp was chosen over a wooden system. Unlike wood, steel is non-combustible, meaning it does not burn if exposed to fire.

CAD and technical drawings were designed by our specialist CAD designer in-house along with a quotation.



➤ **END RESULT:** A steel rental ramp and two sets of step units were installed. These will be on hire until the work on the permanent main building is finished.

The process from quotation to installation was completed within a ten-day turnaround time, ready for the start of the new academic year.

FEATURES INCLUDED:

- **Yellow Tread** - this is a safety feature designed to help those with impaired vision identify the nose of the ramp or step. Additionally, it helps users distinguish any level changes.
- **Infill Handrail** - if the ramp height exceeds 380mm, Infill handrail is a requirement to prevent users from climbing or falling through gaps.
- **1100mm High Rail** - 1100mm handrails are attached to any level sections.
- **Mesh Platform** - the self-draining mesh allows water to pass through rather than collect on the surface. Minimum width: 1500mm.
- **Rest Platform** - a rest platform at 5 metres is required to allow the user to pause.
- **Trombone Ends** - these are added to the ends of a Rapid Ramp to prevent clothes catching.
- **Standard Continuous Handrail** - this handrail system ensures the users always have support to hold onto.

EXTRA FEATURE INCLUDED:

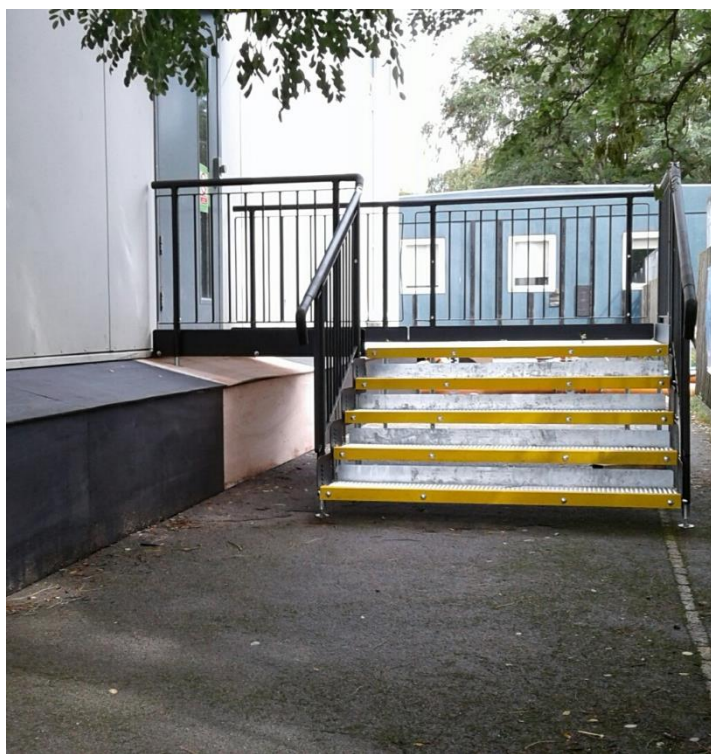
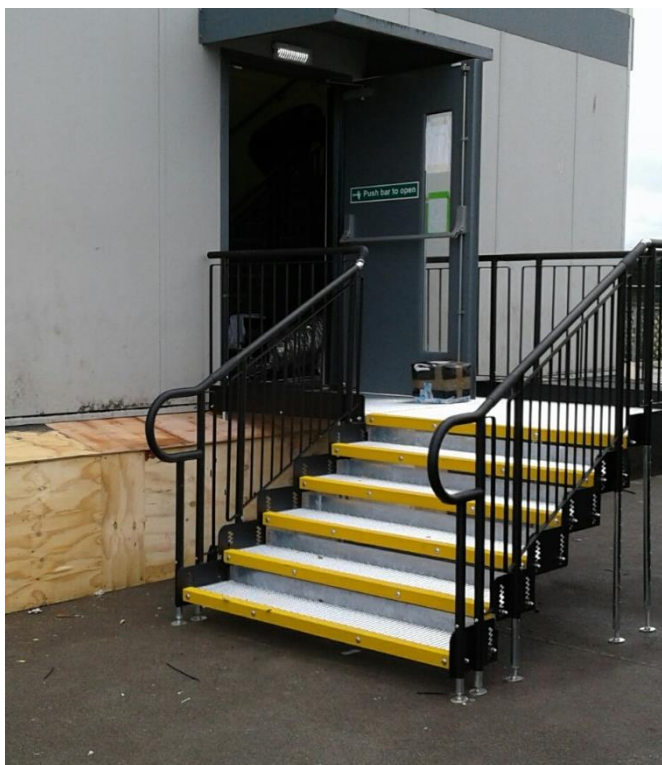
- **Fully Compliant Step Units** – an ideal addition to any ramp installation, providing the access needed for able-bodied users. They can also be standalone units, independent of the Rapid Ramp.

➤ **IS STEEL NON-COMBUSTIBLE?**

Yes, unlike wooden ramps, steel is a non-combustible material that will not burn and melt at temperatures typically encountered in building fires.

Our steel wheelchair ramp is galvanised, a process where a protective coating of zinc is applied to prevent rusting. Also, all components are powder-coated to create a durable finish that is tougher than conventional paint.





Do you have a school that
requires ramps & steps?

Contact our sales team

TEL: **01424 714646**
EMAIL: **SALES@RAPIDRAMP.CO.UK**

Hours:
Open 8am - 5pm, Monday to Friday
Address:
10 Menzies Road, Ponswood Industrial Estate, St Leonards on Sea, East Sussex TN38 9BB