



**Application:** Public Building

**Location:** Belfast, Northern Ireland

**System:** Standard Modular Ramp & Standard Modular steps

**Service Package:** Ramp Rental

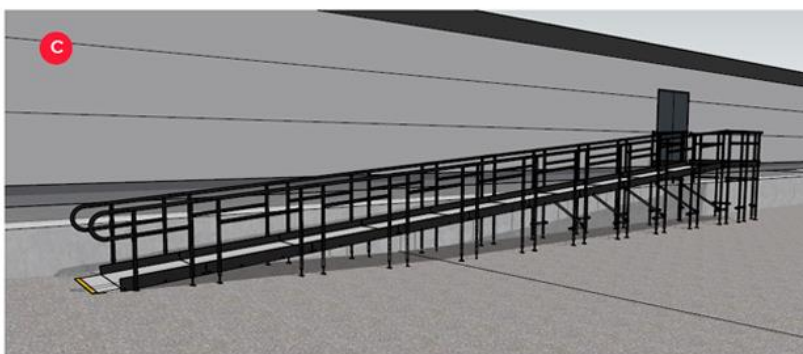
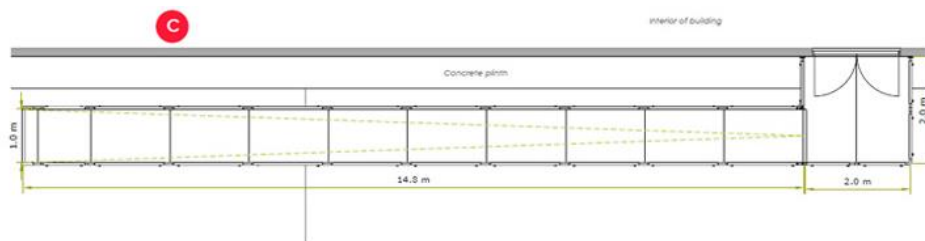
## CASE STUDY: **Belfast Transport Hub**

### **RAPID RAMP INSTALLERS IN NORTHERN IRELAND**

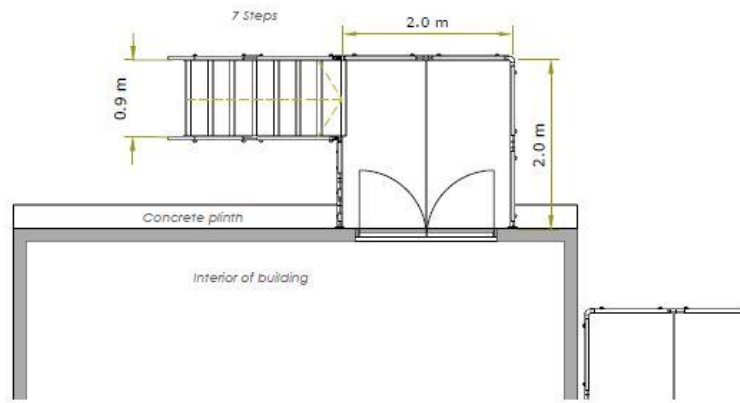
**BACKGROUND:** A Multi-Modal Transport Hub was built at Weavers Cross. It was designed with 26 bus stands, 8 railway platforms, cycle and taxi provisions. More information is available at [BBC News](#).

**REQUIREMENT:** Throughout the duration of the build, temporary ramps & steps were required to the welfare facilities. These were used by the on-site workforce.

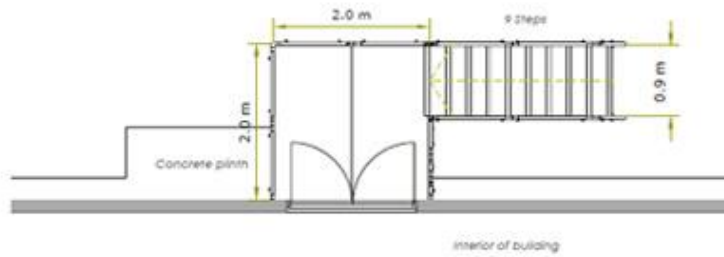
**ADDITIONAL INFORMATION:** CAD ramp & step drawings were designed in-house and provided to the client with their quotation.

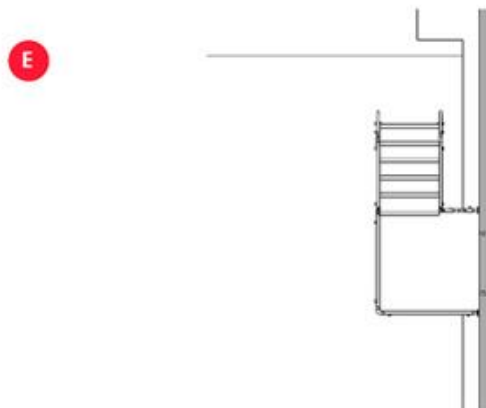
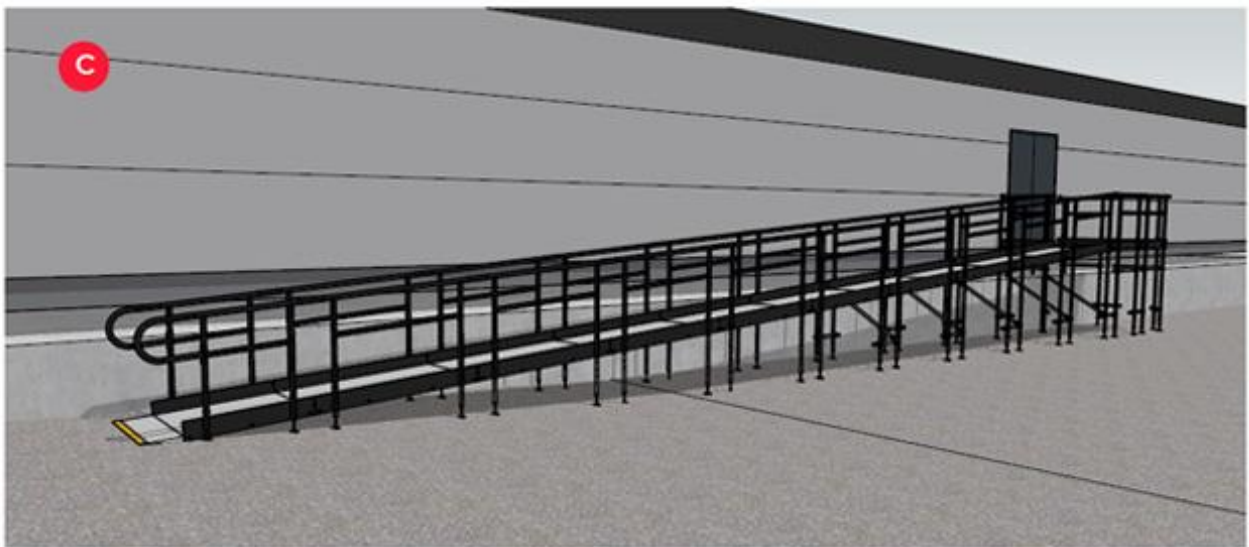
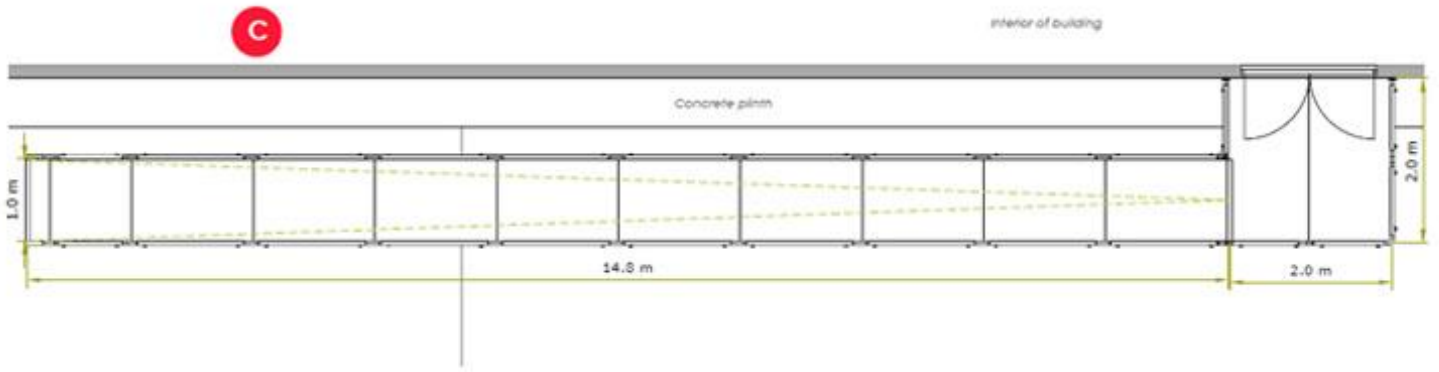


H



B







**END RESULT:** Our Northern Ireland based ramp installers completed the works within a week.

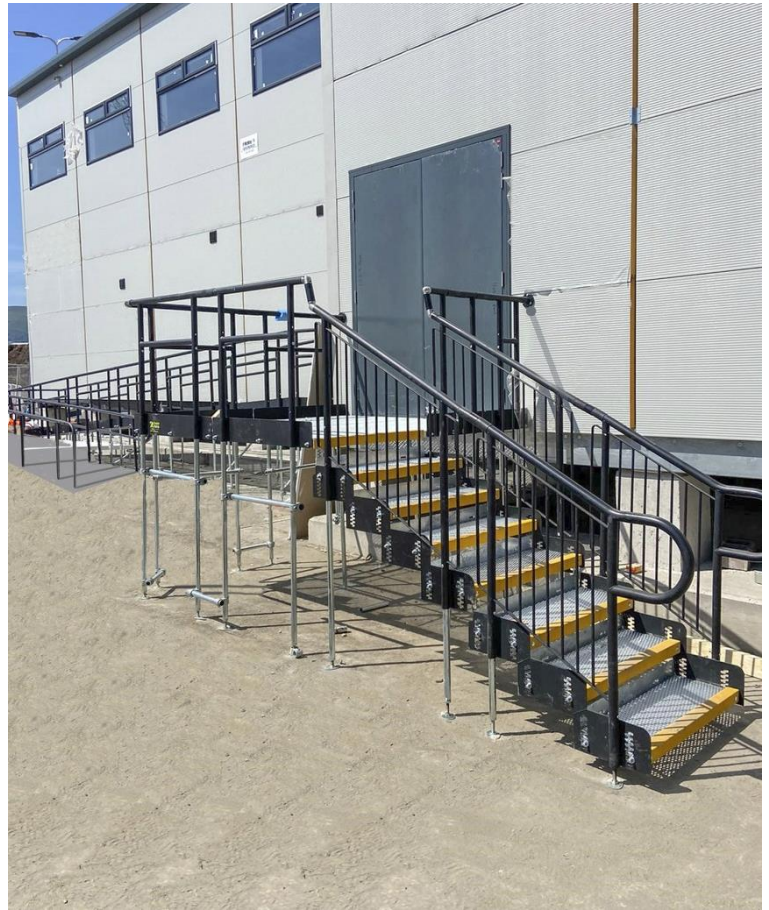
Once the ramps and steps had served their purpose, they were dismantled.

**FEATURES INCLUDED:**

- Trombone Ends - these are added to the ends of a Rapid Ramp to prevent clothes catching.
- Telescopic Legs - these can be adjusted to accommodate different threshold heights.
- Standard Handrail - this handrail system is designed to be grasped by the hand, to provide stability or support.
- Mesh Platform - self-draining mesh allows water to pass through rather than collect on the surface.
- Standard Colour Black - ramps are powder-coated to create a hard finish that is tougher than conventional paint.

**EXTRA FEATURE INCLUDED:**

- Yellow Tread - this is a safety feature designed to help those with impaired vision identify the nose of the ramp and helps users distinguish any level changes.
- Infill Handrail on Step Units - this product prevents users from climbing or falling through gaps.





## WHEELCHAIR RAMPS IN IRELAND

Rapid Ramp has installers based in the Northern Ireland and can deliver & fit across all regions.

Contact us for your free quotation

TEL: 01424 714646

EMAIL: sales@rapidramp.co.uk

## RAMPS & BUILDING REGULATIONS IN IRELAND

The regulations surrounding ramped and stepped access in Ireland is the same as in the UK.

Specifiers and architects must adhere to both Part M and K of the Buildings Regulations.

There are some minimum requirements that need to be met to ensure compliancy

For public buildings including schools, hospitals, shops, airports, and train stations:

- The minimum width of a ramped approach is 1500mm, and the gradient is 1:15 (Doc M. Vol 2. Page 19. 1.26e / BS8300-1. Page 41).
- The minimal length of a level platform is 1500mm (Doc M. Vol 2. Page 20h / Doc. K 2.13b / BS8300-1. Page 41).
- The minimum step width is 1500mm (Doc M. Vol 2. Page 19 1.26e / BS8300-1. Page 36).
- The minimum handrail height for a level platform is 1100mm (Doc K. Page 24. Diagram 3.1. / BS8300-1. Page 42).

[>Further information on the ramp regulations to public buildings<](#)



For dwellings including concrete homes, mobile homes, and caravans:

- The maximum (steepest) gradient for a domestic dwelling is 1:12
- Threshold Height x Gradient = Length of ramp required e.g., 100mm x 12 = 1200mm ramp
- A level landing must be at least 1200mm long.

[>Further information on the ramp regulations to dwellings<](#)



TEL: 01424 714646

EMAIL: SALES@RAPIDRAMP.CO.UK

Hours:

Open 8am - 5pm, Monday to Friday

Address:

10 Menzies Road, Ponswood Industrial Estate, St Leonards on Sea, East Sussex TN38 9BB

Do you require wheelchair ramps and steps?

Contact our sales team