



## CASE STUDY: Prefabricated Ramps, Hainault Homeless

### DELIVERING A VITAL PROJECT WITHIN A TIGHT DEADLINE

**BACKGROUND:** Sixty prefabricated units were scheduled for construction in Woodman Road park to provide housing for the homeless for the next ten years.

**REQUIREMENT:** Prefabricated ramps and steps that can be installed within the tight schedule of a week, last a lifetime, and be removed and reused easily after the site is decommissioned.

**ADDITIONAL INFORMATION:** CAD and technical drawings were designed by our specialist designer in-house.

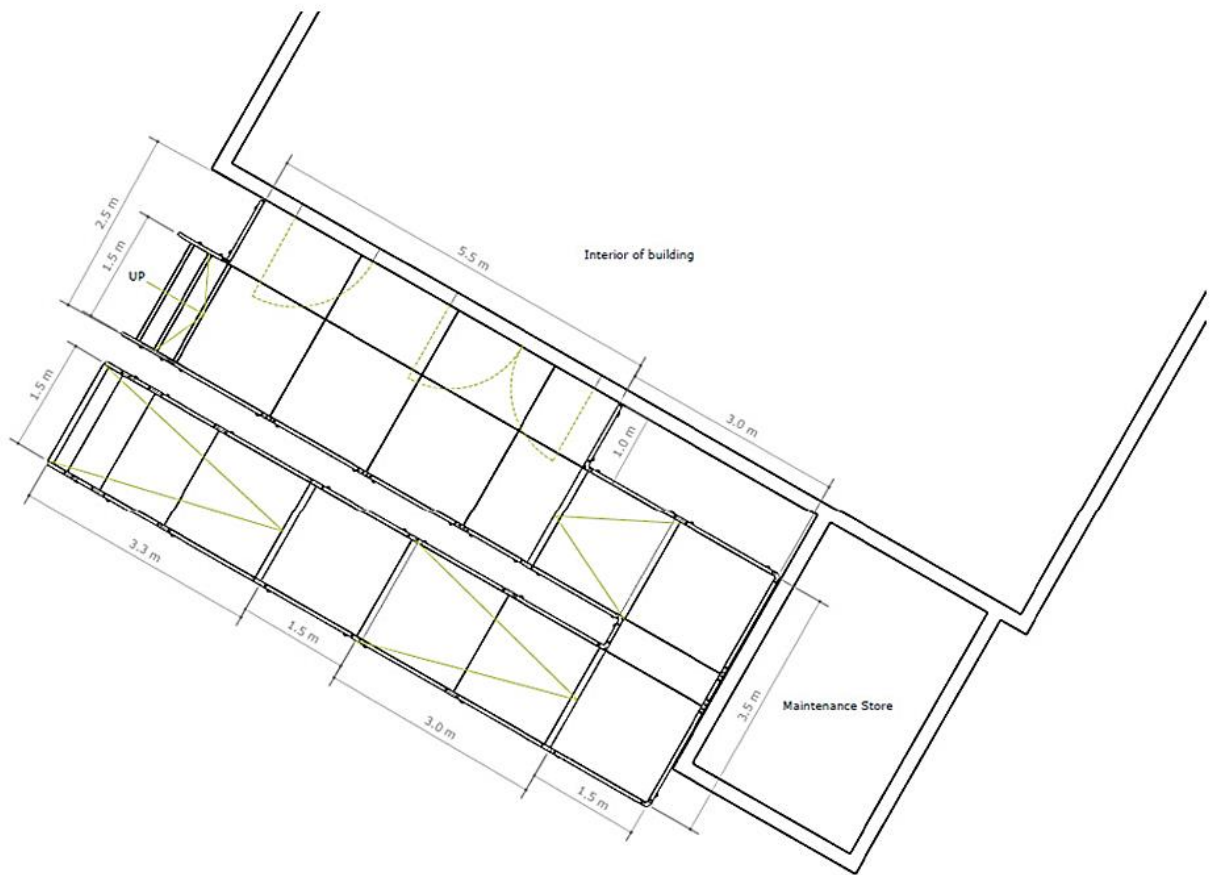
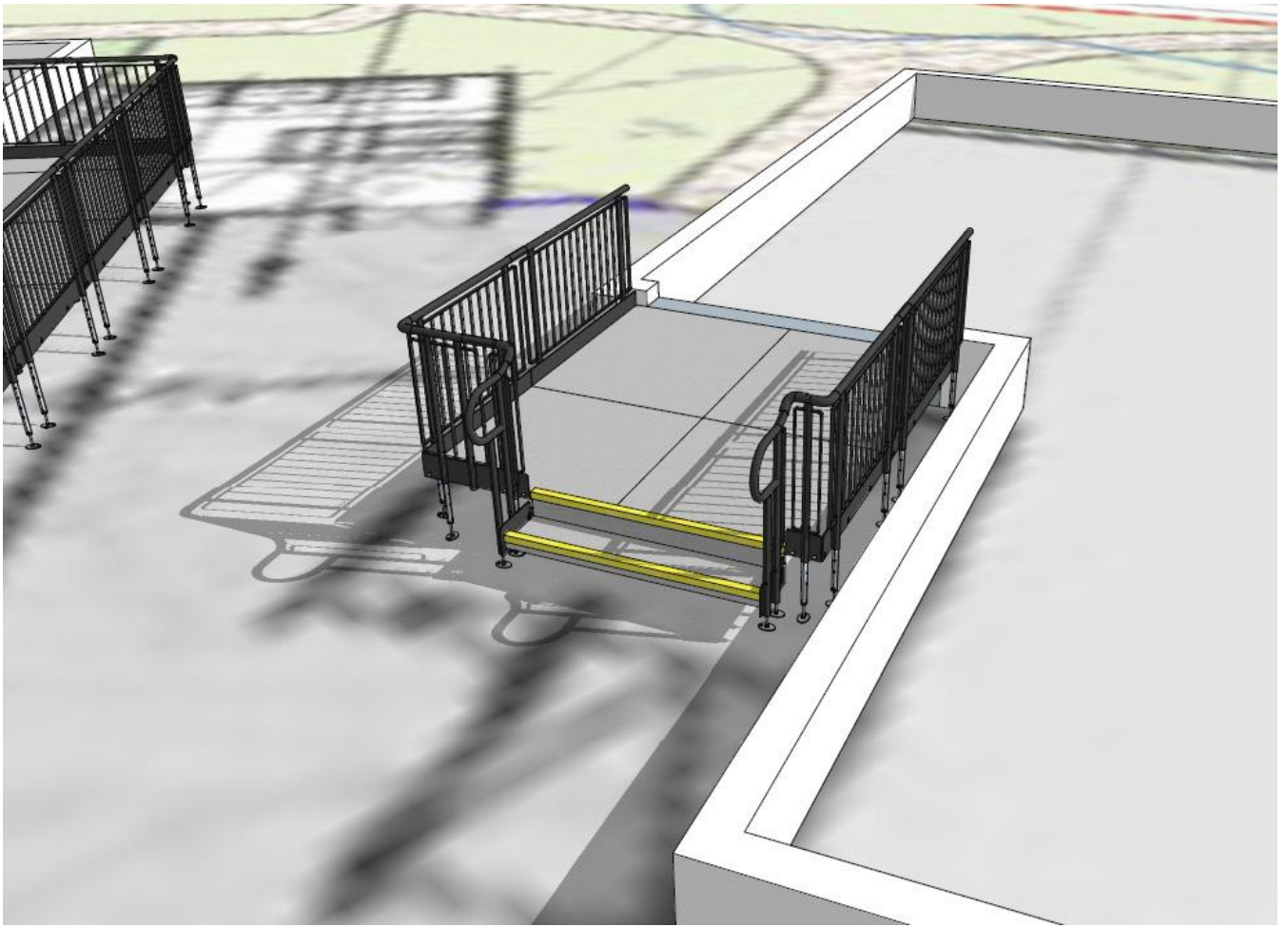
**Application:** Residential

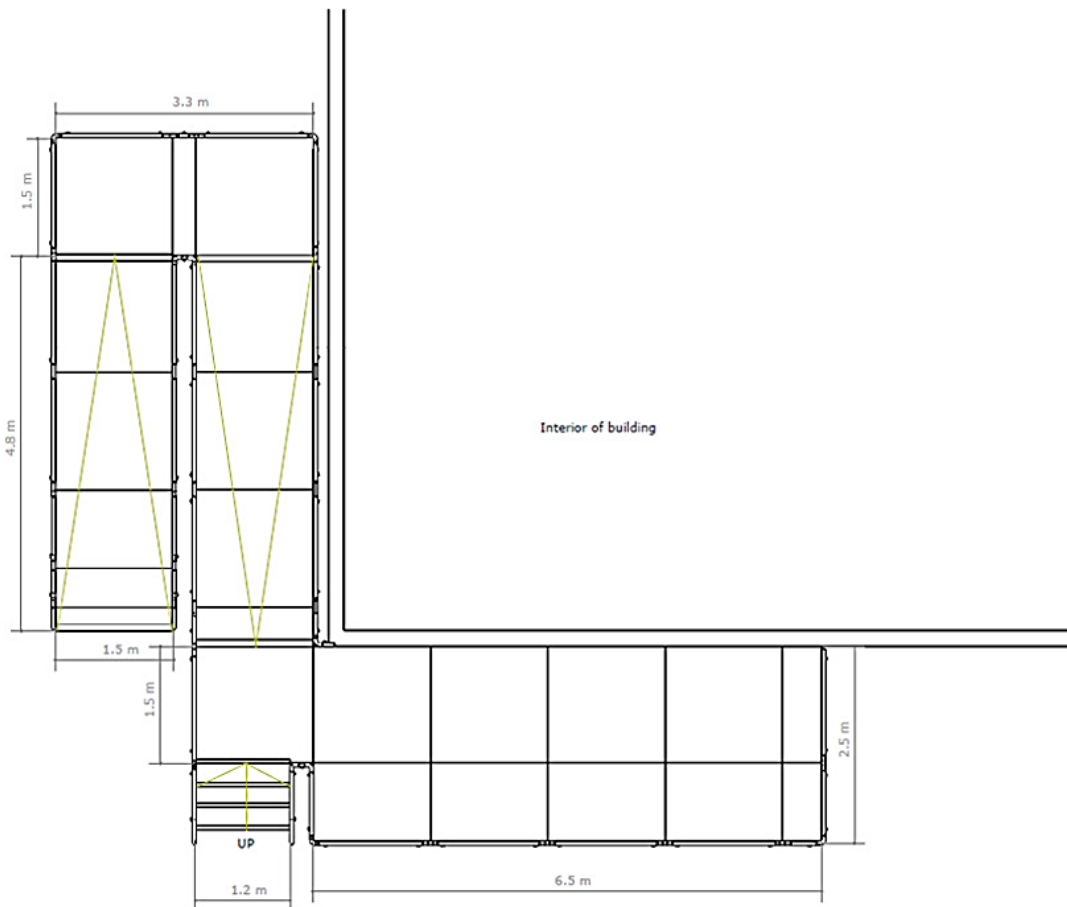
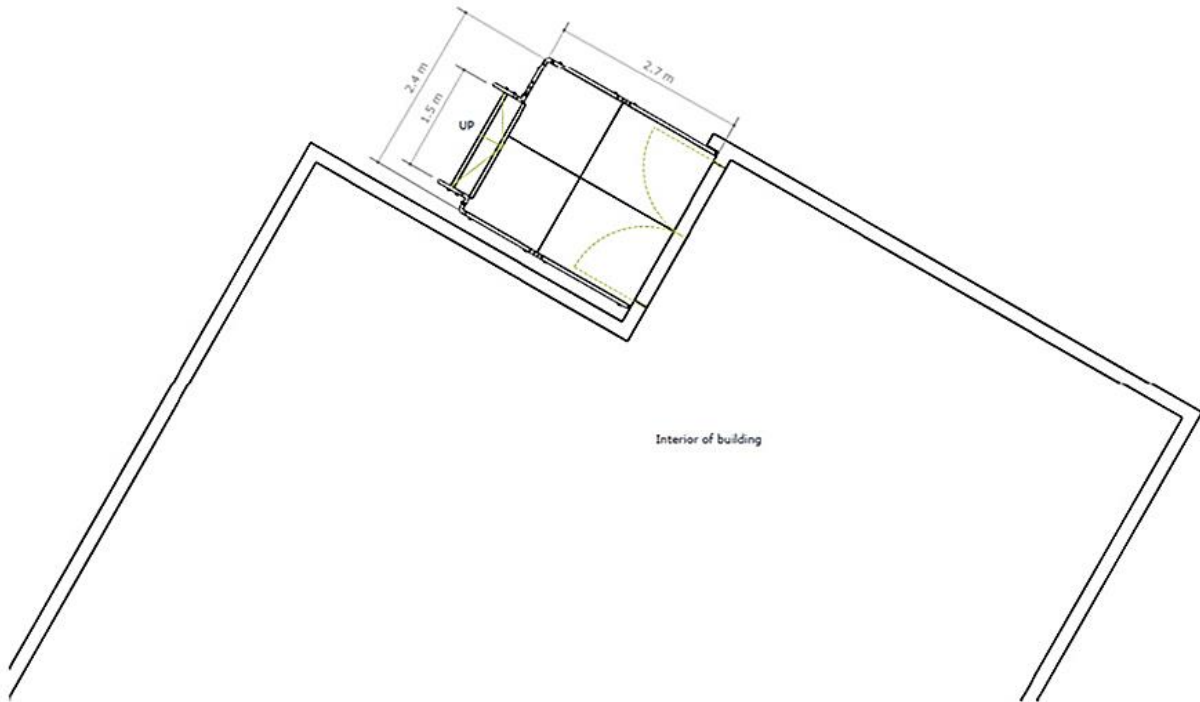
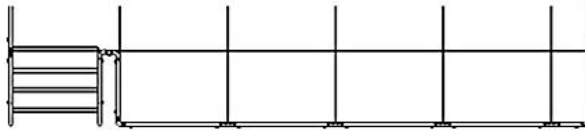
**Location:** Hainault, London

**System:** Standard Ramp System  
Standard Step System

**Service Package:** Supply & Install







**END RESULT:** Prefabricated ramps and steps were delivered and installed within a week.

Extra-wide walkways were included to cover the width of the double doors and to provide turning space for powerchair users.

**FEATURES INCLUDED:**

- Mesh Platform - this self-draining mesh platform allows water to pass through rather than puddle on the surface and potentially freeze.
- Trombone Ends - these are added to the ends of a Rapid Ramp to prevent clothes catching.
- Telescopic Legs - these can be adjusted to accommodate threshold heights.
- Standard Handrail - this handrail system ensures users always have a support to hold onto.
- Standard Colour Black - ramps are powder-coated black to create a hard finish that is tougher than conventional paint.

**EXTRA FEATURE INCLUDED:**

- Infill Handrail - this product prevents users from climbing or falling through gaps.
- Yellow Tread - this is a safety feature designed to help those with impaired vision identify the nose of the ramp and helps users distinguish any level changes.
- Standard Underside Mesh - this is designed to prevent users from gaining access to the underneath of the ramp.
- Step Units - an ideal addition to any ramp installation, providing the access needed for able-bodied users. They can also be stand-alone units, independent of the Rapid Ramp System.





## RAMPS & STEPS FOR PREFABRICATED BUILDINGS:

Like modular buildings, our ramps & steps are prefabricated systems, carrying benefits including:

- A fast construction time - Ramp installations are typically completed within a 1 to 2-day turnaround time. Components are manufactured and stored in-house.
- Easy to remove – Once no required, ramps can be disassembled within a few hours.
- Design and build flexibility - Ramps can be re-designed and re-configured to suit different sized areas.
- Cost-effective – Our access ramp has a life span of over 25 years with no maintenance costs.
- Environmental benefits – Ramp components can be reused under our ramp recycling scheme.
- Safety features - Includes handrails for grip and a slip-resistant mesh platforms as standard.



TEL: **01424 714646**  
EMAIL: **SALES@RAPIDRAMP.CO.UK**

Hours:  
Open 8am - 5pm, Monday to Friday

Address:  
10 Menzies Road, Ponswood Industrial Estate, St Leonards on Sea, East Sussex TN38 9BB

**Do you require wheelchair ramps and steps?**

**Contact our sales team**