



The Timber Dock, National Railway Museum

REQUIREMENT:

The Timber Dock, built in the 1930s, lies at the heart of the museum, as part of the Grade II-listed Station Hall.

Although long open to the public, its original design made access difficult for visitors with mobility impairments, as the only entry was via a metal staircase and platform.

The museum approached us with the need for a compliant ramp to ensure all visitors could fully enjoy the building while preserving its historic character.

DESIGN PHASE:

The surveyor used RapidScanner technology to map the building's exterior, ground levels, and any obstacles.

This detailed data guided our design team in creating a ramp suitable for the space while minimising any impact on the building.

The final 2D and 3D plans were provided with the client's quotation, giving a clear visual of the proposed installation.

APPLICATION

Public Building

LOCATION

York

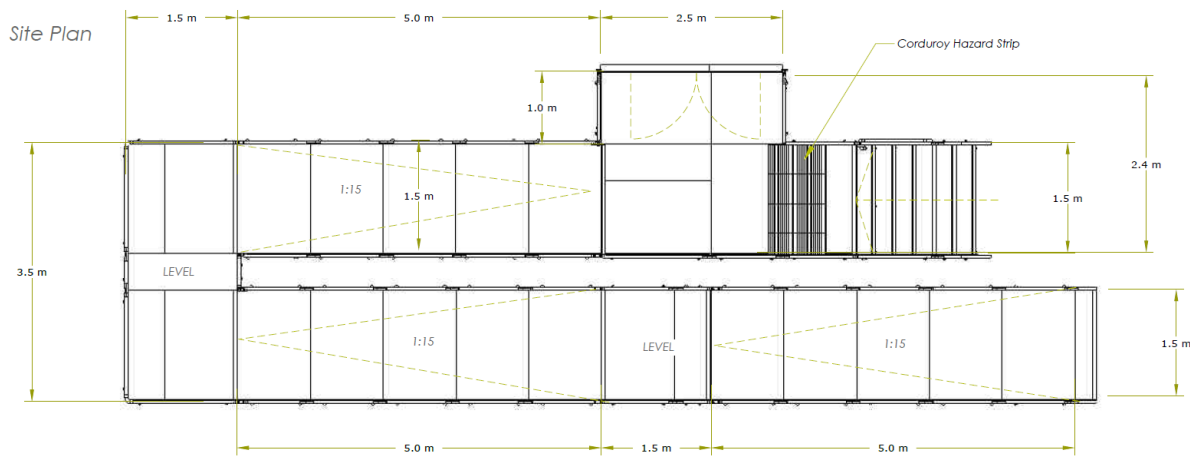
SYSTEM

Modular Ramp & Steps

SERVICE PACKAGE

Supply & Install





INSTALLATION:

The system, comprising a ramp, platforms and access steps, was installed in just one week, replacing the existing one.

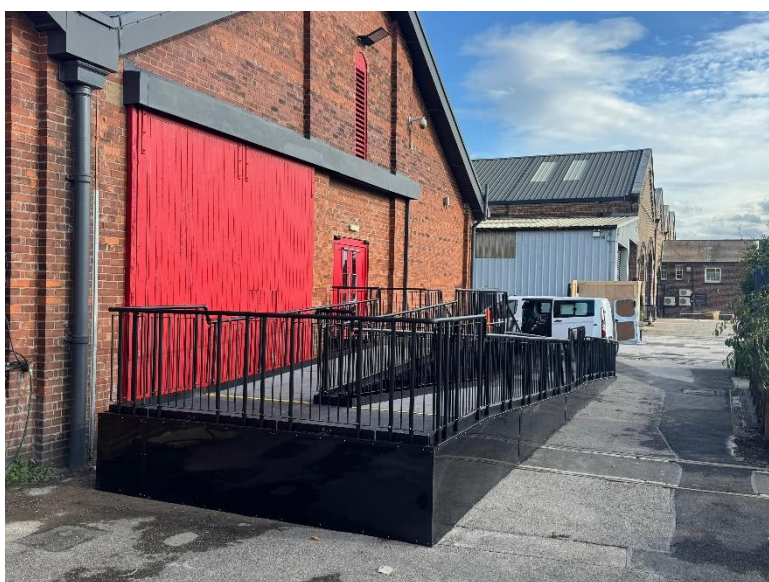
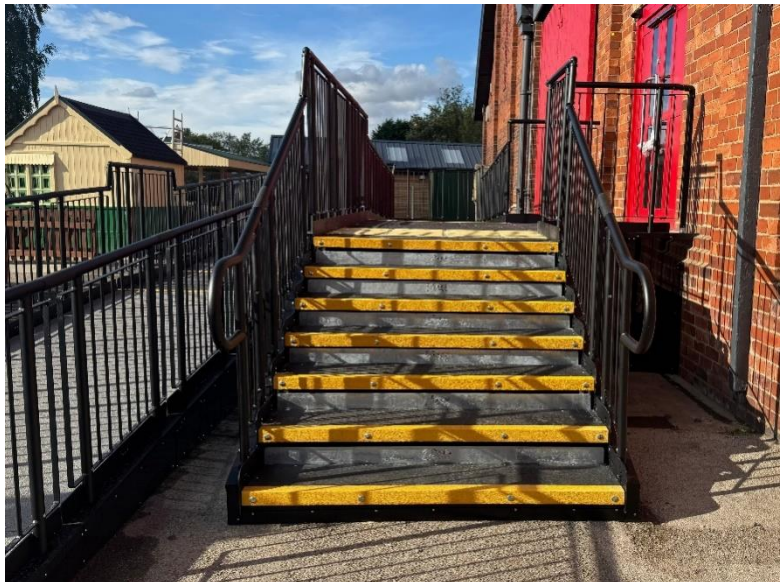
As an extra safety measure, the steps were fitted with Corduroy Hazard Strips — tactile surfaces designed to alert visually impaired visitors to a change in level.

The project was completed well ahead of the busy summer holiday period, when the museum welcomes high visitor numbers.

Thanks to this upgrade, the Timber Dock is now fully accessible, welcoming visitors of all abilities to explore and enjoy this historic part of the museum.

FEATURES INCLUDED:

- Anti-climbing Infill Handrail - This product safeguards against users climbing or falling through gaps.
- Yellow Tread - A safety feature designed to help those with impaired vision identify the system's nose and any level changes.
- Looped Trombone Ends – Prevents clothes from snagging at the ends.
- Slip-Resistant Mesh Platform - A multi-directional walkway with self-draining steel mesh and a galvanised finish.
- Continuous Handrail - This handrail system ensures that users always have a support to hold onto.
- 1100mm High Rail - These handrails attach to any level sections.
- Standard Colour: Black - Our ramps have a powder-coated black finish that is more durable than typical paint.
- Adjustable Telescopic Legs - These can be adapted to suit various threshold heights.
- Solid Hoarding - This skirt is purposefully designed to deter unauthorised access to the underside of the ramp, making it a frequent choice for public buildings.
- Corduroy Hazard Strips - This feature serves as a tactile warning for individuals with visual impairments, indicating the presence of a step approach.



EMAIL: sales@rapidramp.co.uk
VISIT: rapidramp.co.uk

HOURS: Open 8am - 5pm, Monday to Friday
ADDRESS: Riverside Works, Church Ln, Etchingam, TN19 7AS

Do you require modular
ramps and steps?

Request a quick price