

The Joshua Tree – A Children in Need Project

REQUIREMENT:

When BBC DIY SOS posted a call for help on Facebook for a Children in Need project, we knew Rapid Ramp could assist.

We supplied a disabled access ramp, while our partners at Healthcare Matters generously provided the skilled labour for its installation.

Our contribution was a small part of the wider project, which involved building a new facility for the Cheshire-based charity Joshua Tree.

APPLICATION

Public Building

LOCATION

Northwich, Cheshire

SYSTEM

Modular Ramp

SERVICE PACKAGE

Supply & Install

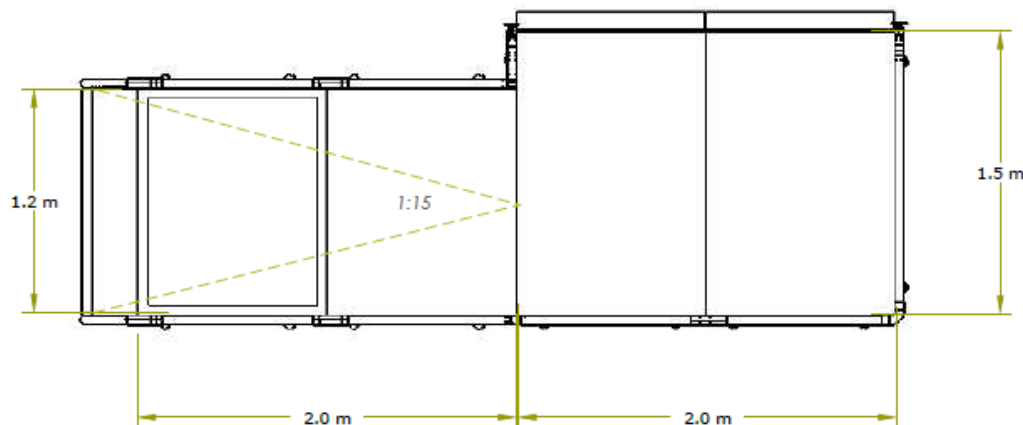
DESIGN PHASE:

A Healthcare Matters team member was on-site the next day to survey the site using our Rapid Scanner technology.

Within an hour of receiving the scan data, our design team produced both a 2D plan and a 3D model of the proposed ramp, overlaid on a virtual rendering of the site.

The scan revealed a manhole cover, so the designers added a removable access hatch to the ramp design.

Site Plan





INSTALLATION:

The ramp was installed only three working days after the Facebook post went live, completed late at night as soon as the tarmac was ready.

This rapid turnaround was made possible through the commitment and collaboration of our in-house designers, warehouse team, and the Healthcare Matters survey and installation crew.

Everyone worked seamlessly together to deliver this important charitable contribution in record time.

FEATURES INCLUDED:

- Infill Handrail - This product safeguards against users climbing or falling through gaps.
- Yellow Tread - A safety feature designed to help those with impaired vision identify the system's nose and any level changes.
- Looped Trombone Ends – Prevents clothes from snagging at the ends.
- Slip-Resistant Mesh Platform - A multi-directional walkway with self-draining steel mesh and a galvanised finish.
- Continuous Handrail - This handrail system ensures that users always have a support to hold onto.
- Standard Colour: Black - Our ramps have a powder-coated black finish that is more durable than typical paint.
- Adjustable Telescopic Legs - These can be adapted to suit various threshold heights.
- Access Hatch - The hatch opens, granting individuals access to the underground services.



EMAIL: sales@rapidramp.co.uk
VISIT: rapidramp.co.uk

HOURS: Open 8am - 5pm, Monday to Friday
ADDRESS: Riverside Works, Church Ln, Etchingam, TN19 7AS

Do you require modular
ramps and steps?

Request a quick price