

## CASE STUDY: Elizabeth Fort, Cork

**BUILDING HISTORY:** A 17th-century star fort off Barrack Street in Cork, Ireland, originally built as a defensive fortification on high ground.

**PROJECT BACKGROUND & REQUIREMENT:** With funding from the Outdoor Public Spaces Scheme, building works began to upgrade the visitor experience.

A ramp with joining steps was required from a new timber-framed stage that would be utilised for various cultural events.

The system needed to comply with Part M regulations and support various traffic, including public footfall, wheelchairs, and stage equipment.

**CAD DRAWINGS:** CAD drawings were produced in-house based on project technical drawings supplied by the client.

The ramp was designed to bypass a support post, and at the start (near the stage entrance) and was 750mm from the edge of another post to allow room for a timber handrail.

The final drawings were provided to the client with their quotation.

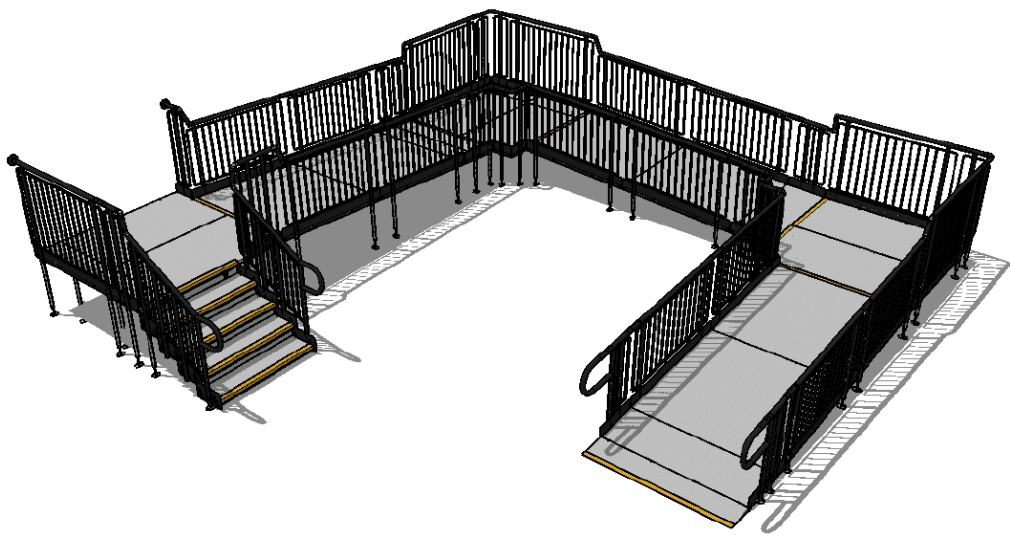
**Application:** Heritage

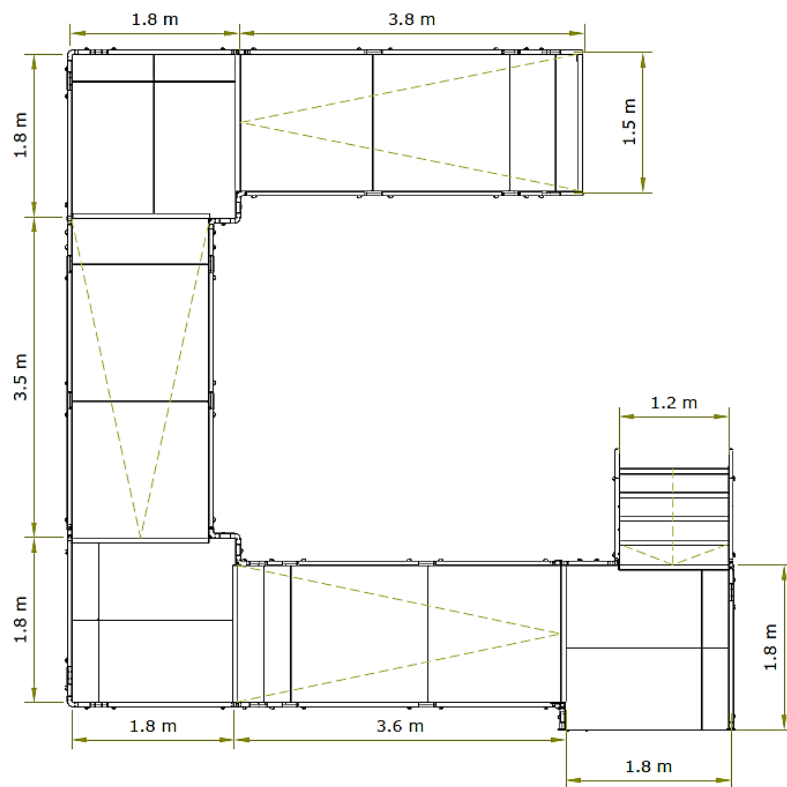
**Location:** Cork, Ireland

**System:** Fully Compliant Ramp & Steps

**Service Package:** Supply & Installation

PERSPECTIVE





**END RESULT:** The system was installed over concrete and took only two days to complete. Plus, it includes a compliant 1:15 gradient.

All Rapid Ramp Systems are ideal for outdoor use, being constructed from rustproof galvanised steel.

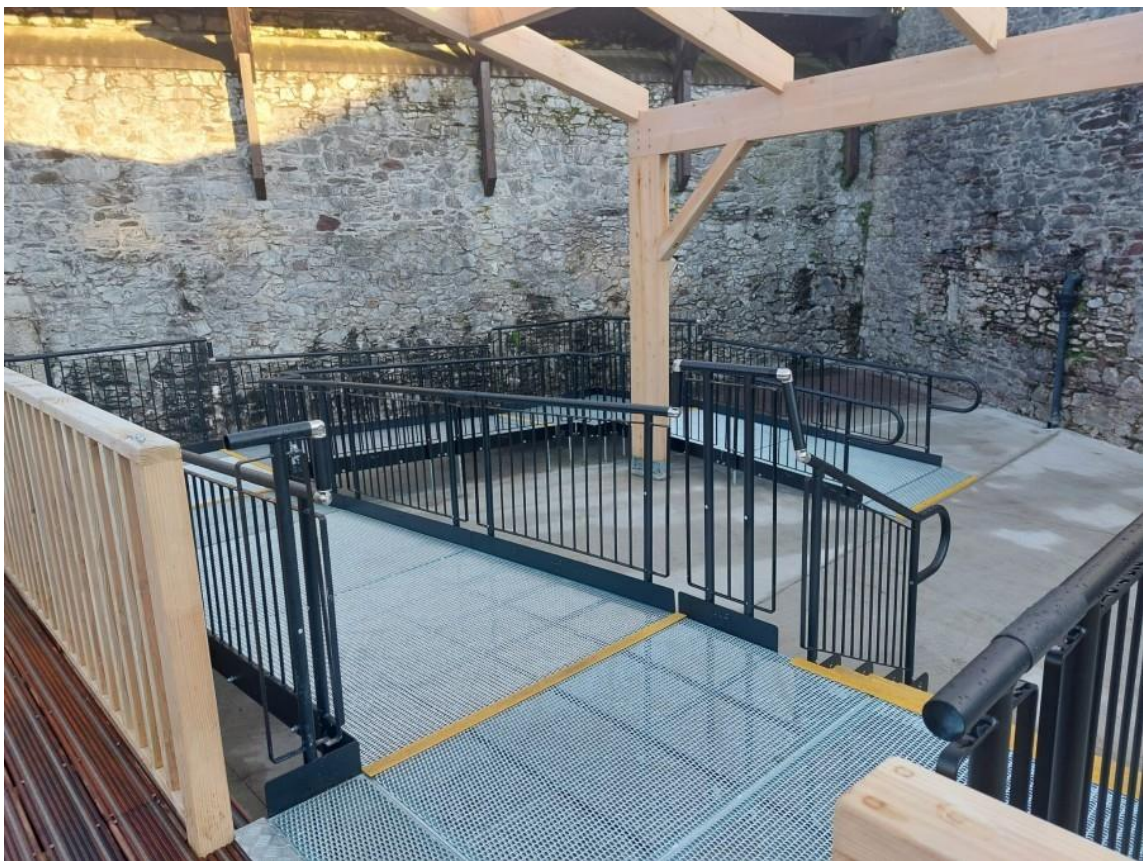
Galvanising is a process where a protective coating of zinc is applied to prevent rusting and moss growth.

#### FEATURES INCLUDED:

- Infill Handrail - this product prevents users from climbing or falling through gaps.
- Yellow Tread - this is a safety feature designed to help those with impaired vision identify the nose of the ramp and any level changes.
- Trombone Ends - these are added to the ends of a Rapid Ramp to prevent clothes catching.
- Mesh Platform - the self-draining mesh allows water to pass through rather than collect on the surface.
- Continuous Handrail - this handrail system ensures users always have support to hold onto.
- Standard colour: Black - Ramps are powder coated black to create a durable finish that is tougher than conventional paint.

#### EXTRA FEATURE INCLUDED:

- Compliant Step Unit - an ideal addition to any ramp installation, providing the access needed for able-bodied users. They can also be stand-alone units, independent of the Rapid Ramp System.



TEL: **01424 714646**  
EMAIL: **SALES@RAPIDRAMP.CO.UK**

Hours:  
Open 8am - 5pm, Monday to Friday  
Address:  
10 Menzies Road, Ponswood Industrial Estate, St Leonards on Sea, East Sussex TN38 9BB

Do you require wheelchair ramps and steps?

Contact our sales team