



CASE STUDY: **St Paul's Cathedral**

DDA IMPROVEMENTS WORKS – SOUTH TRANSEPT RAMP

BACKGROUND: DDA improvement works were scheduled to start with a permanent masonry ramp from the north entrance.

REQUIREMENT: Due to this, the temporary Rapid Ramp currently at the north entrance would be dismantled, with the parts being used for the alternative south entrance ramp.

This new ramp would provide public access throughout the building works.

ADDITIONAL INFORMATION: 3D and technical drawings were designed by our specialist CAD designer in-house along with a quotation.

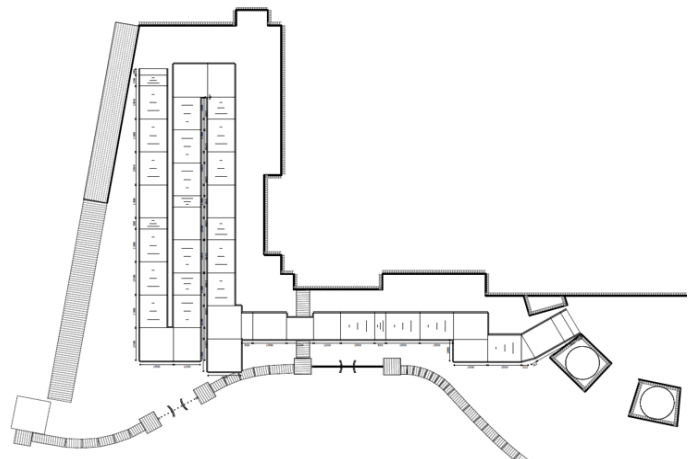
The appropriate conservation and planning authorities were consulted throughout the design period, which included discussing how the ramp would be supported around the existing paving features.

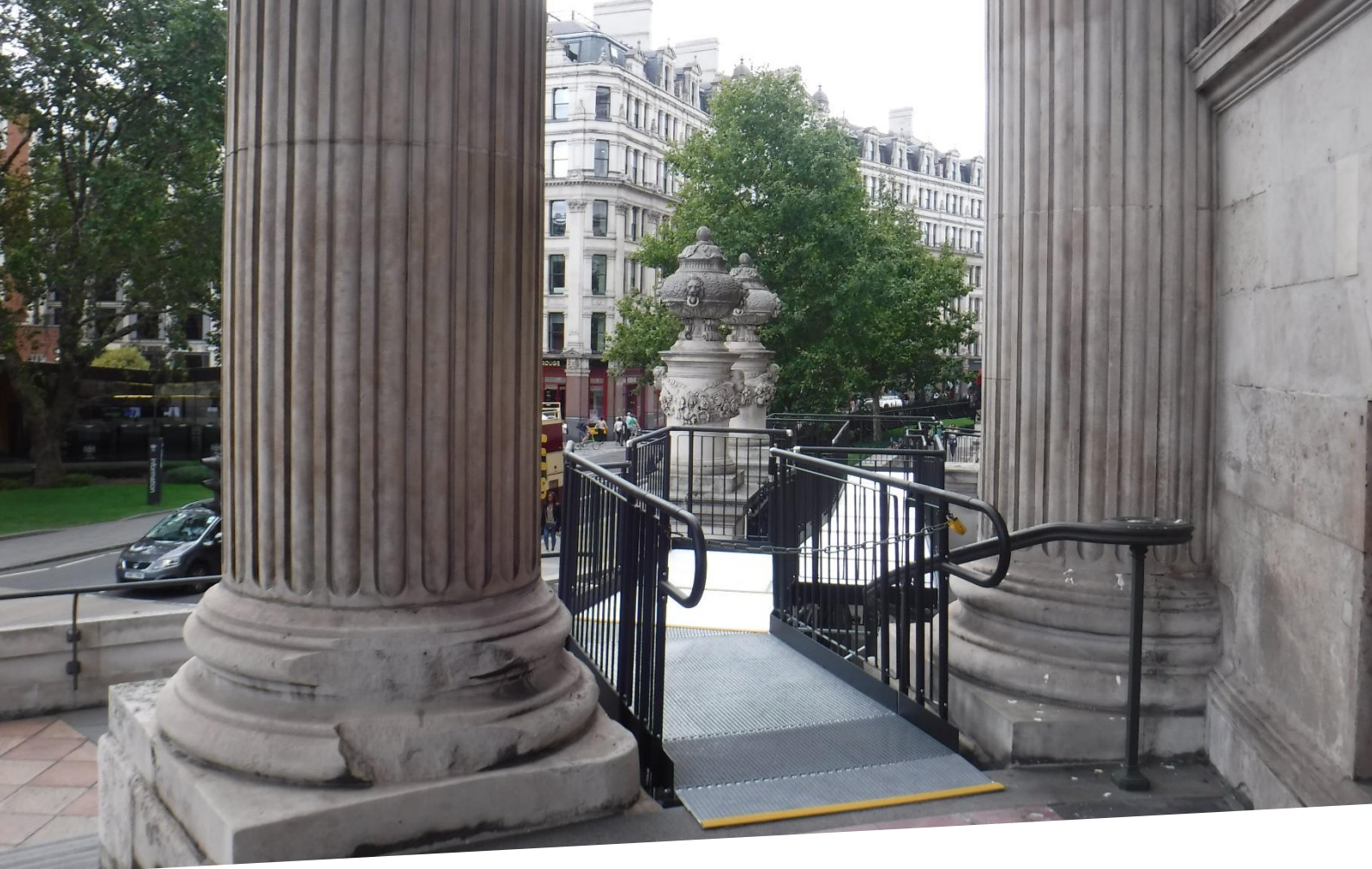
Application: Heritage & Commercial

Location: London

System: Fully Compliant System

Service Package: Supply & Install





END RESULT: A fully compliant Rapid Ramp was installed to the south transept entrance on the historic cobbled ground.

To prevent any damage being caused by the ramp system, the feet were not bolted down. Instead, they were connected by cross-braces to ensure rigidity. Also, we allowed for extra legs to ensure stability.

FEATURES INCLUDED:

- Infill Handrail - this product prevents users from climbing or falling through gaps.
- Yellow Tread - this is a safety feature designed to help those with impaired vision identify the nose of the ramp. Additionally, it helps users distinguish any level changes.
- Trombone Ends - these are added to the ends of a Rapid Ramp to prevent clothes catching.
- Mesh Platform - the self-draining mesh allows water to pass through rather than collect on the surface.
- Rest Platform – a rest platform at 5 metres is required to allow the user to pause.
- 1100mm High Rail – these handrails attach to any level sections.
- Continuous Handrail - this handrail system ensures users always have support to hold onto.

EXTRA FEATURE INCLUDED:

- Standard Underside Mesh - this mesh is designed to prevent individuals from gaining access to the underneath of the ramp. It is often specified for schools and public buildings.

RAMPS TO HISTORIC BUILDINGS

We consciously take particular care when dealing with historic buildings, offering a solution that doesn't need to be bolted down.

Regarding any ramp design, we're always willing to consult with the appropriate conservation and planning authorities.

“ Thank you to the install team for making substantial progress on the temporary ramp, most appreciated!

Architect ”



TEL: **01424 714646**
EMAIL: **SALES@RAPIDRAMP.CO.UK**

Hours:
Open 8am - 5pm, Monday to Friday

Address:
10 Menzies Road, Ponswood Industrial Estate, St Leonards on Sea, East Sussex TN38 9BB

Do you know a historic building
needing disabled access?

Contact our sales team