



Hospital Surgical Hub, Royal Glamorgan Hospital

PROJECT BACKGROUND:

A critical incident was declared at the Princess of Wales Hospital, forcing Cwm Taf Morgannwg University Health Board to close eight theatres and ten wards, as well as relocate the Intensive Care Unit.

In response, urgent plans were put in place to temporarily increase capacity at the Royal Glamorgan Hospital. The expansion included four surgical theatres, two wards, and a new endoscopy complex with two treatment rooms, a five-bay ward, and facilities for sterilising endoscopes.

Installing the temporary facility — referred to by CTM staff as “the mini-hospital” — was a major challenge due to the limited space available between the main hospital building and the road.

The project was made even more demanding by the tight deadlines, with the endoscopy facilities required to open within six weeks and the theatre complex within nine weeks.

APPLICATION

Healthcare / Modular Building

LOCATION

Ynysmaerdy, Wales

SYSTEM

Temporary Modular Ramps & Steps

SERVICE PACKAGE

Hire

OUR ROLE:

To supply and install fully compliant ramps and steps to the new units.

We were selected for our ability to work to demanding, tight programmes and deliver rapid installation without compromising safety, product quality, or performance.

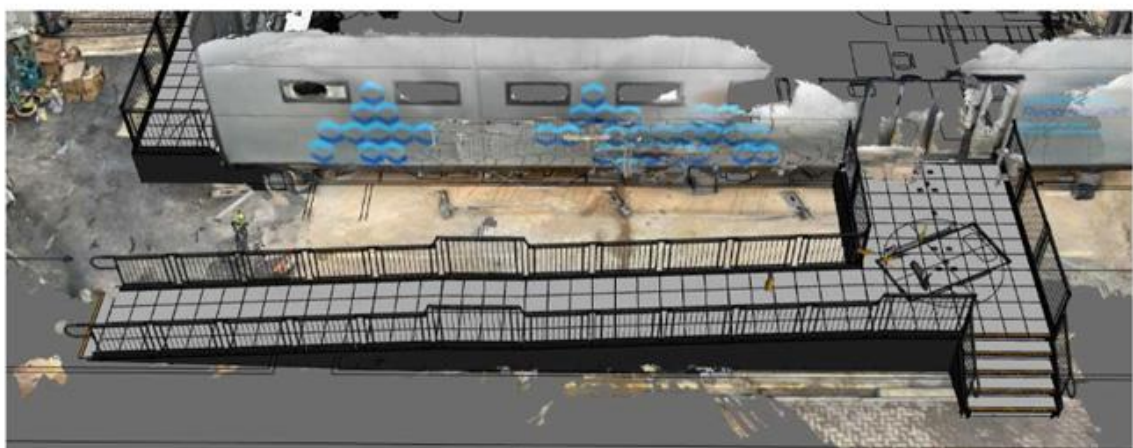
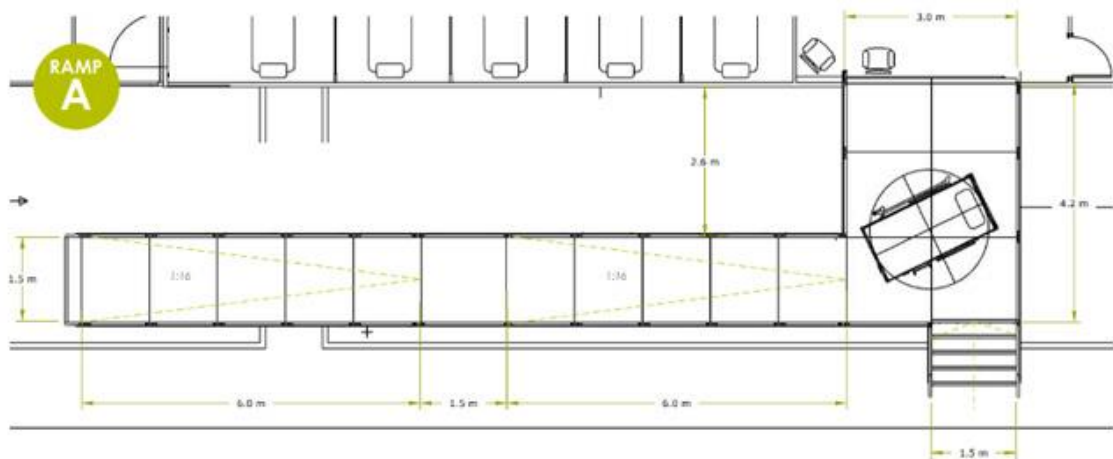
DESIGN PHASE:

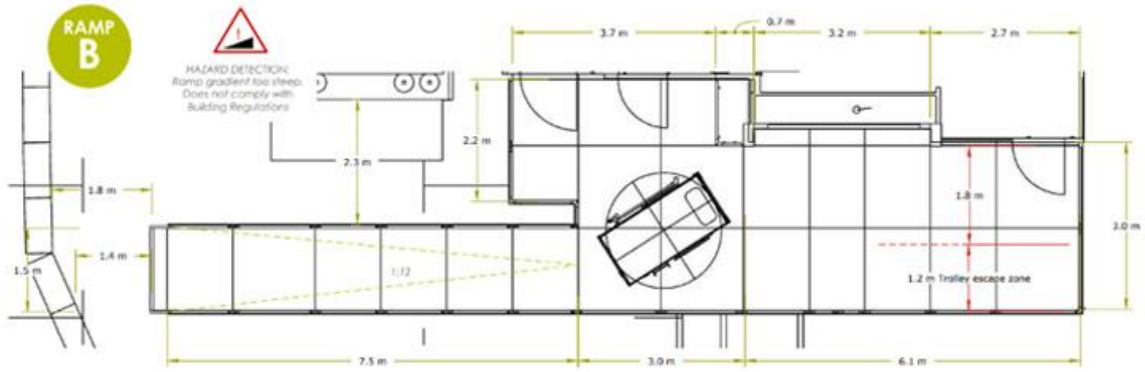
We worked closely with the main contractor to quickly review, refine, and finalise estimates and quotations as the project scope developed.

Our in-house surveyor also carried out a detailed site survey within days of receiving the enquiry to confirm dimensions, assess site conditions, and identify any potential obstacles that could impact the installations.

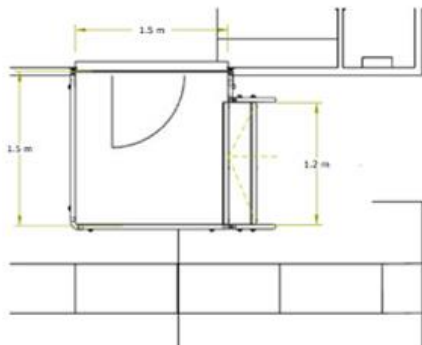
Following the survey, 2D and 3D drawings were produced and issued to the main contractor, who used them during discussions with the Trust to clearly present the proposed layout and support the approval process.

The ramp systems and connecting routes were designed to provide safe and practical access between key clinical areas, including the recovery unit and operating theatres.

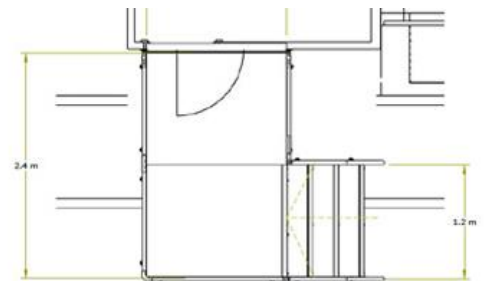




STEP C



STEP F



INSTALLATION:

Once the modular units were positioned in the car park, installation of the access systems was carried out in carefully managed stages across the site — ensuring safety, speed, and efficient coordination throughout.

The installed solutions included ramps, connecting walkways, a central platform, and standalone step units, all designed to work together to seamlessly link the modular buildings.

All our systems are engineered with a load capacity of 1,000 kg (one tonne), ensuring safe use for both pedestrian traffic and the movement of hospital beds and wheeled operating theatre equipment across their surfaces.

At the end of the hire period, the systems were efficiently dismantled, with the equipment now available for reuse on other hire projects.

FEATURES INCLUDED:

- Infill Handrail - This product safeguards against users climbing or falling through gaps.
- Yellow Tread - A safety feature designed to help those with impaired vision identify the system's nose and any level changes.
- Slip-resistant Mesh Platform - A multi-directional walkway with self-draining steel mesh and a galvanised finish.
- Looped Trombone Ends – Prevents clothes from snagging at the ends.
- Slip-Resistant Mesh Platform - A multi-directional walkway with self-draining steel mesh and a galvanised finish.
- Continuous Handrail - This handrail system ensures that users always have a support to hold onto.
- 1100mm High Rail - These handrails attach to any level sections.
- Standard Colour: Black - Our ramps have a powder-coated black finish that is more durable than typical paint.
- Adjustable Telescopic Legs - These can be adapted to suit various threshold heights.
- Solid Hoarding - This skirt is purposefully designed to deter unauthorised access to the underside of the access system.
- Modular Steps - Provides access for able-bodied users and can be a joining addition to a modular ramp installation or an independent unit.



The initial feedback has been brilliant. The patients have been complementary.

Rhys Hopkins, Senior Nurse - Theatres and Pre-Assessment, Cwm Taf Morgannwg UHB







Do you require modular ramps and steps?

Request a quick price

EMAIL: sales@rapidramp.co.uk
VISIT: rapidramp.co.uk

HOURS: Open 8am - 5pm, Monday to Friday
ADDRESS: Riverside Works, Church Ln, Etchingam, TN19 7AS