



CASE STUDY: Princess Alexandra Hospital

REQUIREMENT: Emergency access to the rooftop in the event of a fire.

The rooftop is fully exposed to the elements; therefore, the chosen system would need to withstand impact and perform in all-weather conditions, including heavy wind and rain.

A wooden ramp was ruled out due to its ability to rot, and a galvanised modular ramp was concluded to be the best option.

ADDITIONAL INFORMATION: 2D and 3D CAD drawings were created by our designer in-house. These were given to the client with their quotation.

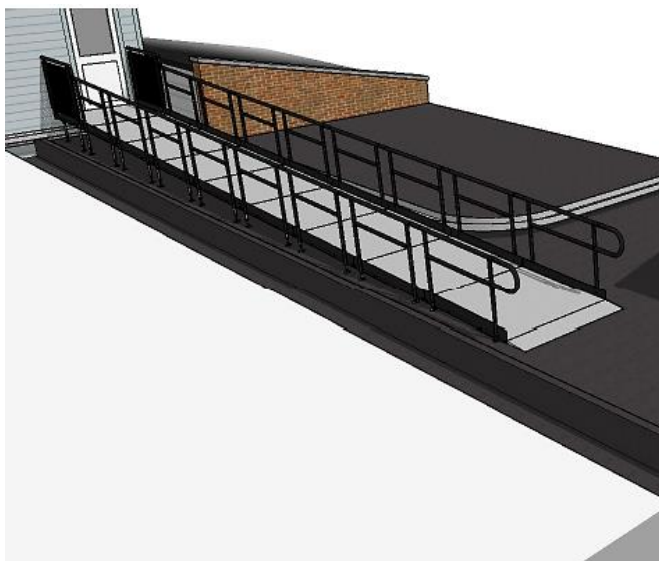
One of the 3D drawings advises that the cable trunking and pipework can be passed freely under the platform. This will prevent such obstructions from becoming tripping hazards.

Application: Healthcare

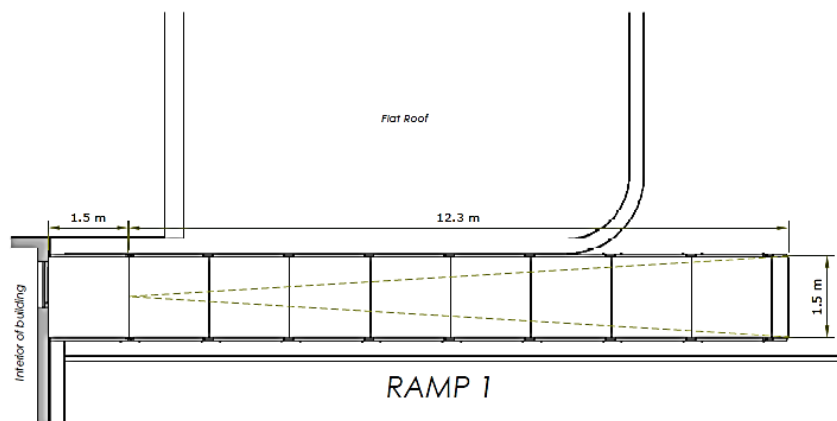
Location: Harlow, Essex

System: Standard Modular Ramp

Service Package: Supply & Install

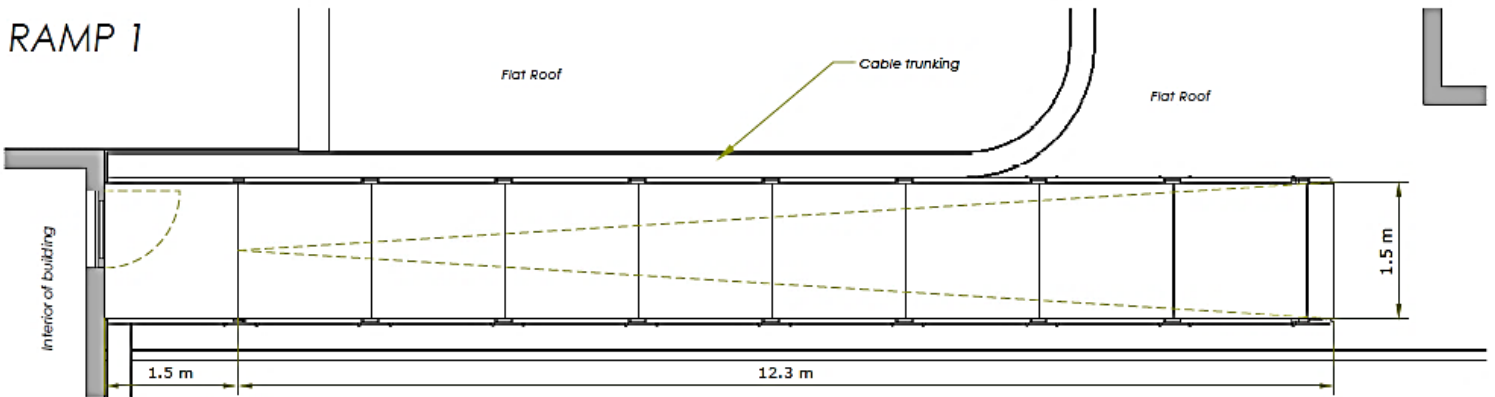


SITE PLAN





RAMP 1



END RESULT: The Rapid Ramp System did not require to be fixed down. The weight of the system itself keeps it in place freestanding.

It also has numerous legs to spread the weight load evenly, and as an extra safeguard, each foot has a metal tile underneath to protect the underneath flooring.

Please note that we have now switched to a rubber tile for future projects.

Typically, other ramps need to be fixed down to a roof with resin fixings; however, these can fail over time and cause the roof to leak.

Our system came in components that were small enough to be carried in the hospital lifts and onto the roof. This saved the time and cost of a crane to get the ramp onto the roof.

FEATURES INCLUDED:

- Mesh Platform - this self-draining mesh platform allows water to pass through rather than puddle on the surface and potentially freeze.
- Trombone Ends - these are added to the ends of a Rapid Ramp to prevent clothes catching.
- Telescopic Legs - these can be adjusted to accommodate threshold heights.
- Standard Handrail - this handrail system ensures users always have a support to hold onto.
- Standard Colour Black - ramps are powder-coated black to create a hard finish that is tougher than conventional paint.



TEL: **01424 714646**
EMAIL: **SALES@RAPIDRAMP.CO.UK**

Hours:
Open 8am - 5pm, Monday to Friday

Address:
10 Menzies Road, Ponswood Industrial Estate, St Leonards on Sea, East Sussex TN38 9BB

Do you require wheelchair ramps and steps?

Contact our sales team