



Application: Building project

System: Standard Modular Ramp

Service Package: Ramp Rental

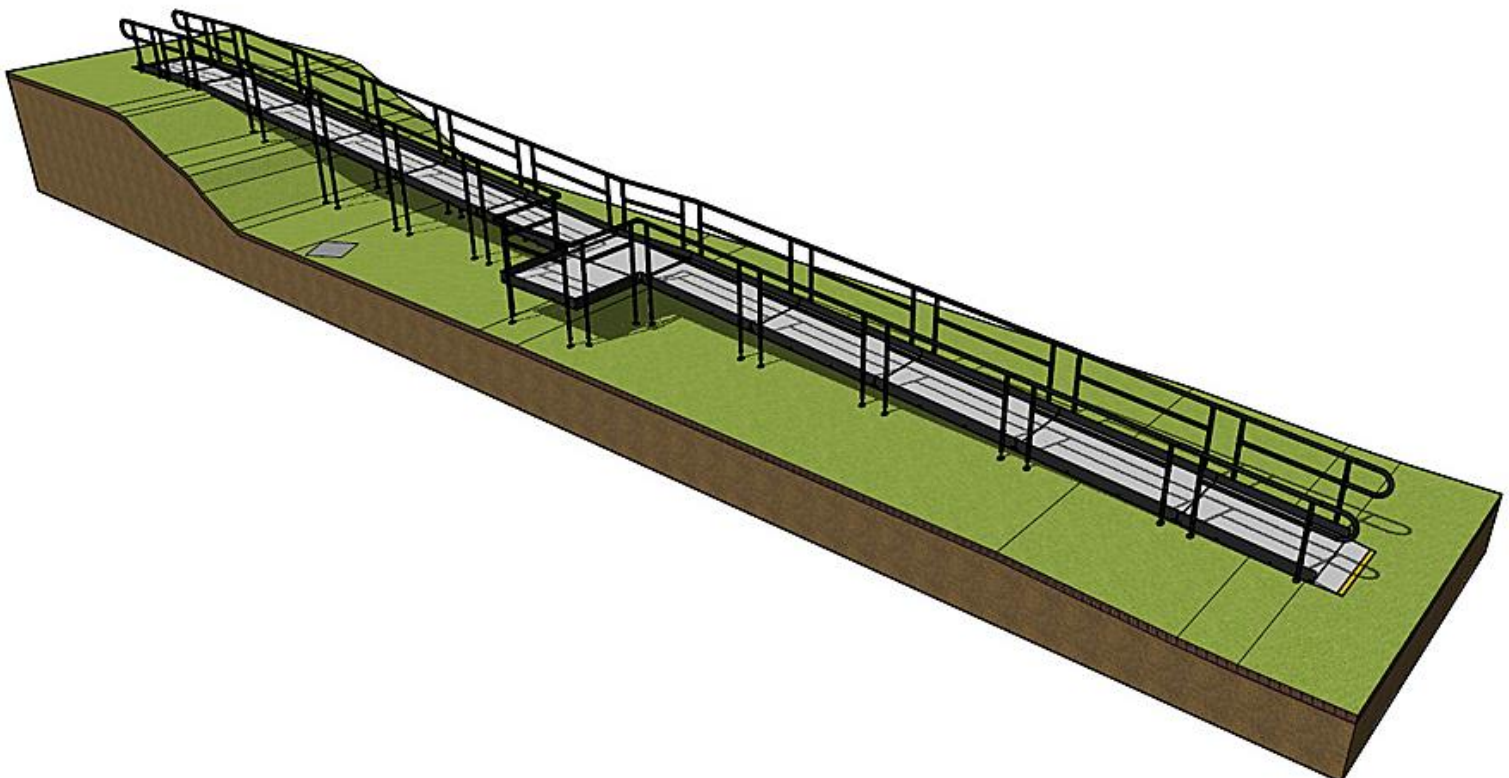
CASE STUDY: Western Access Boundary

REQUIREMENT: A temporary pedestrian ramp was required from the west boundary entrance into the lower building site throughout the duration of the motorway expansion project.

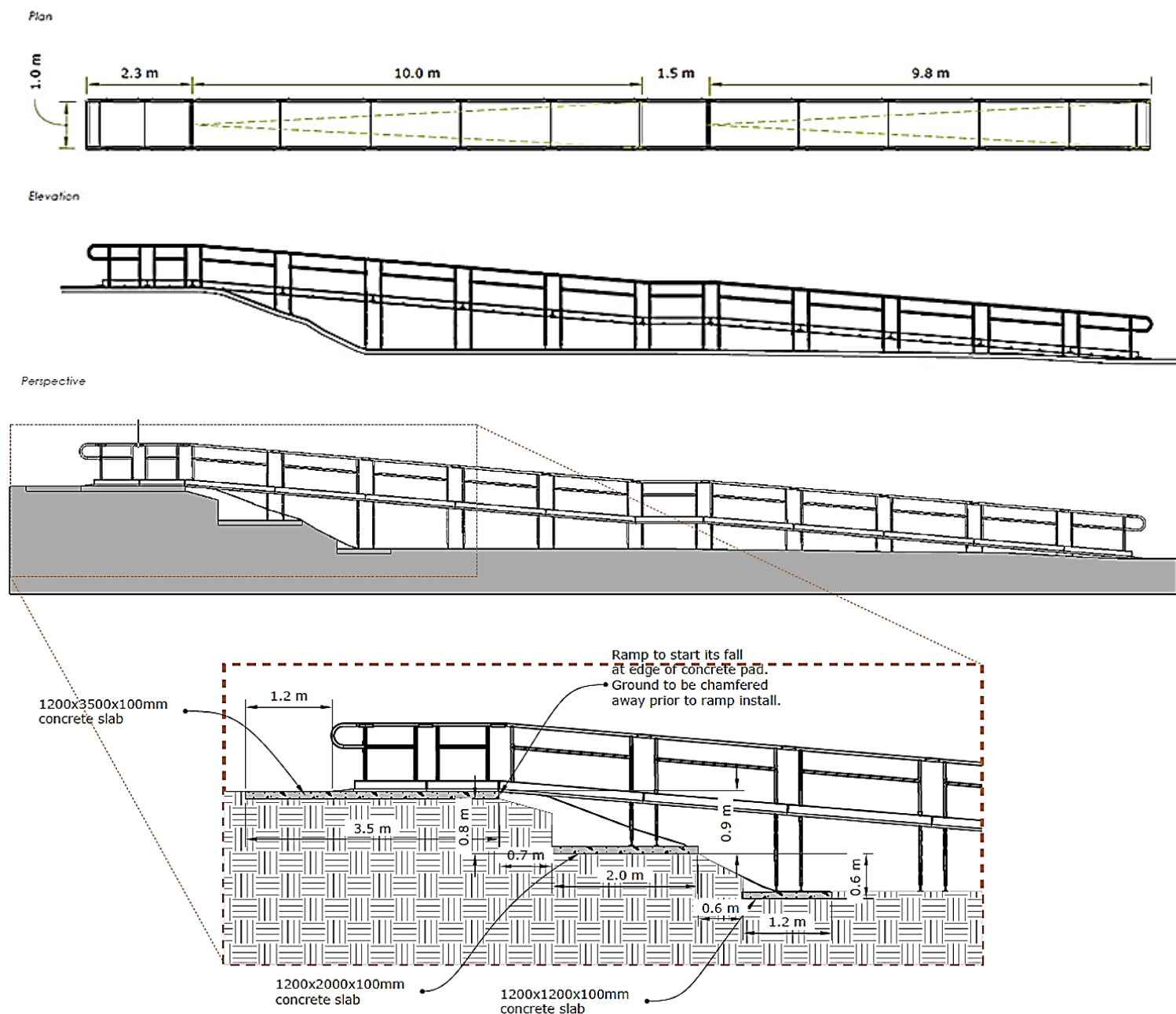
ADDITIONAL INFORMATION: CAD drawings were designed in-house and based on measurements taken from the site survey.

The final drawings were given to the client with their rental quotation.

Perspective



THE SAFETY OF MODULAR RAMP



END RESULT: The ramp was completed within a three-day turnaround time.

Prior to ramp installation, some of the upper ground had to be removed so that a flat concrete entrance point could be produced. Also, at two lower descents, the ground was levelled out to allow a concrete pad to be laid at each point. The ramp toe plates then sit on top of the pads.

Once rental duration is completed the ramp will be removed.

FEATURES INCLUDED:

- Standard Handrail - this handrail system ensures users always have support to hold onto.
- Trombone Ends - these are added to the ends of a Rapid Ramp to prevent clothes catching.
- Telescopic Legs - these can be adjusted to accommodate different threshold heights.
- Mesh Platform - the self-draining mesh allows water to pass through rather than collect on the surface.
- Black Powder Coated Finish – rails are coated with thermosetting powder to provide a non-conductive, non-slip and scratch resistant surface.

EXTRA FEATURES INCLUDED:

- Yellow Tread - this is a safety feature designed to help those with impaired vision identify the nose of the ramp and any level changes.
- Rest Platform – a rest platform at every 5 metres of ramp is required to allow the user to pause.



TEL: **01424 714646**
EMAIL: **SALES@RAPIDRAMP.CO.UK**

Hours:
Open 8am - 5pm, Monday to Friday

Address:
10 Menzies Road, Ponswood Industrial Estate, St Leonards on Sea, East Sussex TN38 9BB

**Do you require wheelchair
ramps and steps?**

Contact our sales team