



CASE STUDY: **Queen Mary's Hospital**

REQUIREMENT: A modular ramp was needed throughout the temporary works to provide access to the raised modular WC on hire.

The building included a disabled toilet with changing table, a cleaner's cupboard, and a unisex toilet.

CAD DRAWINGS: Drawings were produced in-house based on project technical drawings supplied by the client and measurements from our own site surveyor.

The final drawings were provided to the client with their quotation.

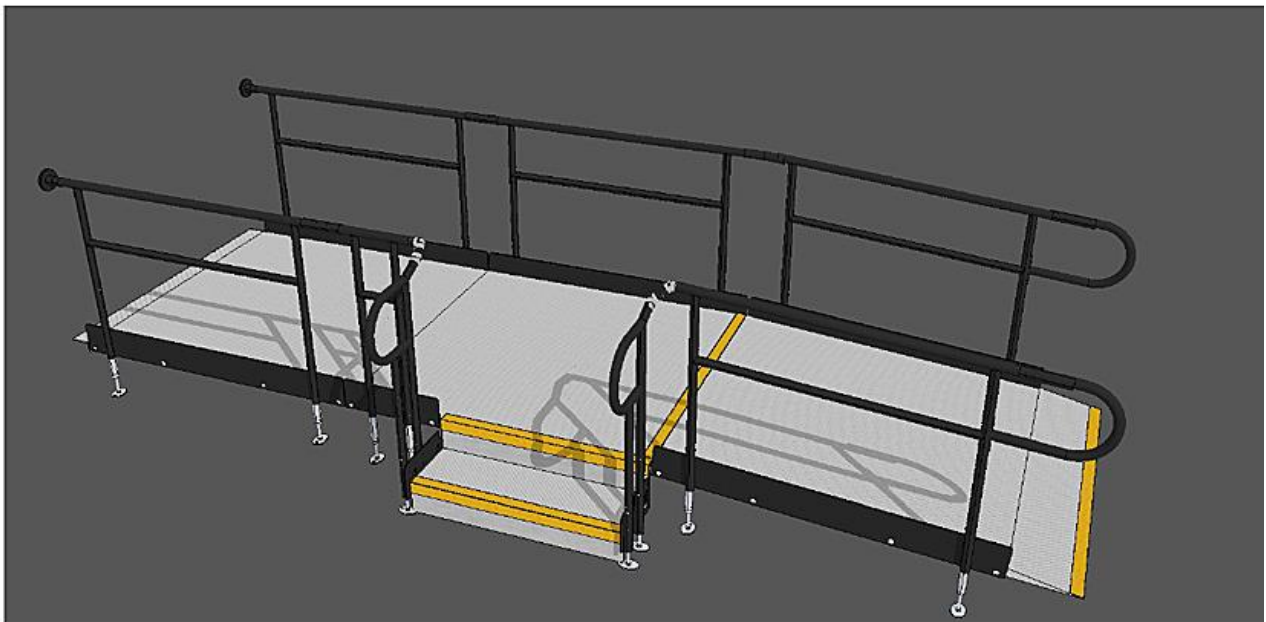
Application: Modular Building

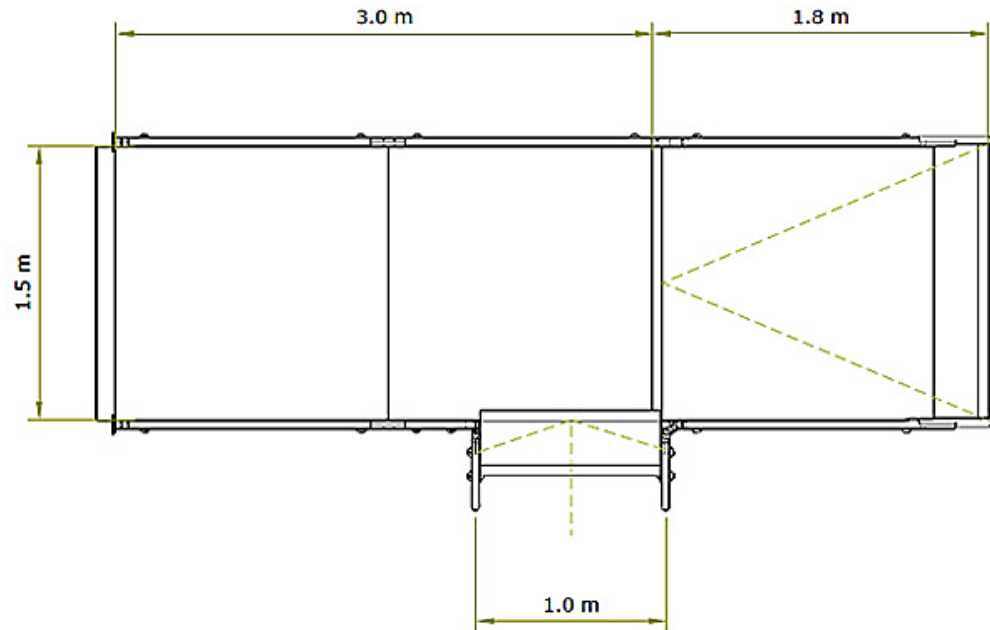
Location: Sidcup, London

System: Standard Modular Ramp & Steps

Service Package: Ramp Rental

PERSPECTIVE





END RESULT: The ramp was needed within 24 hours of the building landing.

Installation was completed over soft and hard surfaces within a few hours and, once in place, was ready for instant use.

The legs were adjusted to match the varying ground levels, and the feet nearest the door were fixed to concrete slabs for extra rigidity.

Our systems can be installed on a variety of surfaces, including concrete, tarmac, artificial grass, gravel, and muddy terrain.

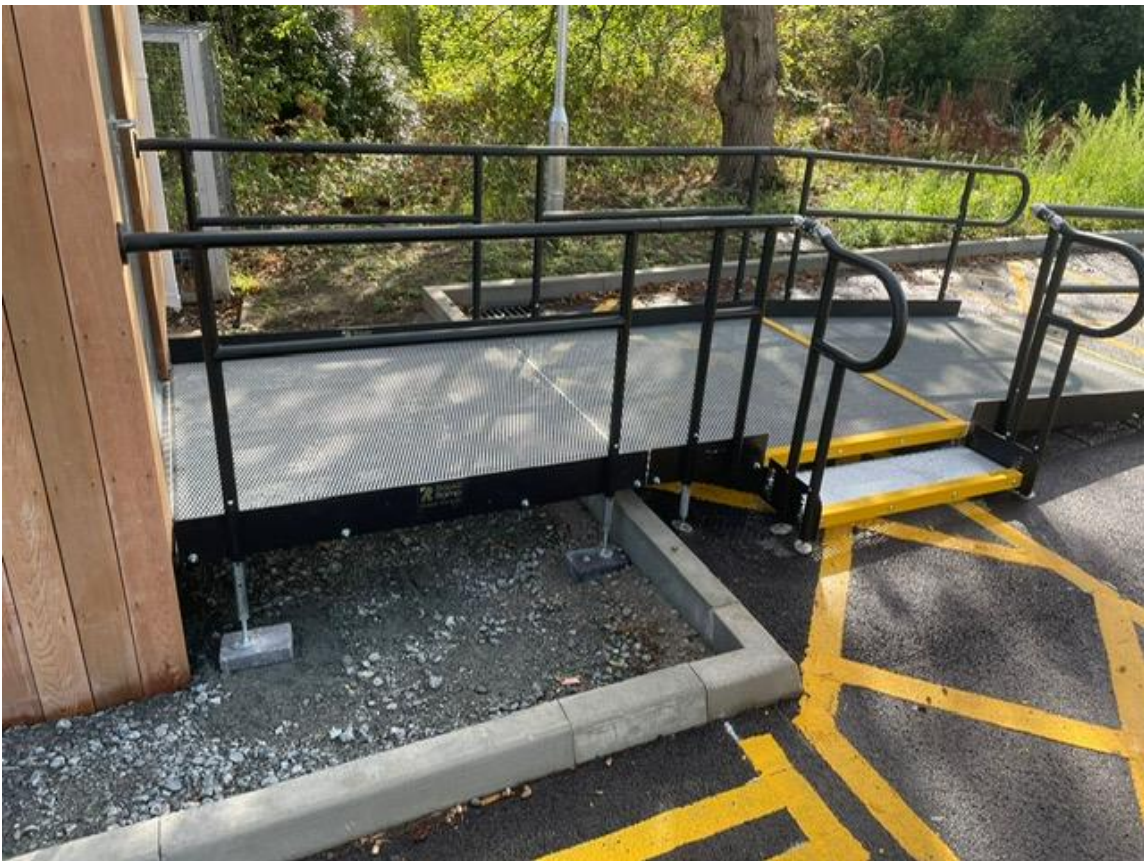
Once the works were concluded, the system was dismantled and reused in other rental applications.

FEATURES INCLUDED:

- Standard Handrail - this handrail system ensures users always have support to hold onto.
- Trombone Ends - these are added to the ends of a Rapid Ramp to prevent clothes catching.
- Mesh Platform - the self-draining mesh allows water to pass through rather than collect on the surface.
- Black Powder Coated Finish – rails are coated with thermosetting powder to provide a non-conductive, non-slip and scratch resistant surface.
- Telescopic Legs - these can be adjusted to accommodate different threshold heights.

EXTRA FEATURE INCLUDED:

- Yellow Tread - this is a safety feature designed to help those with impaired vision identify the nose of the ramp.
- Standard Step Unit - An ideal addition to any ramp installation, providing the access needed for able-bodied users. They can also be stand-alone units, independent of the Rapid Ramp System.



TEL: **01424 714646**
EMAIL: **SALES@RAPIDRAMP.CO.UK**

Hours:
Open 8am - 5pm, Monday to Friday

Address:
10 Menzies Road, Ponswood Industrial Estate, St Leonards on Sea, East Sussex TN38 9BB

Do you require wheelchair
ramps and steps?

Contact our sales team