



Park Gate, Borough of Fareham

REQUIREMENT:

DFG Project Scope:

- Installation of a new uPVC single-fold door with a fixed side panel, replacing the existing uPVC patio door at the rear of the property.
- Supply and installation of a modular ramp at the rear of the property to establish a level access point to the back door.
- Construction of a concrete hardstand at the base of the ramp.
- Creation of a new concrete pathway designed to connect seamlessly with the ramp.

Funding for these adaptations was secured through a DFG grant provided by Portsmouth Council.

BEFORE PHOTOS:



APPLICATION

Residential

LOCATION

Borough of Fareham, Hampshire

SYSTEM

Standard Modular Ramp

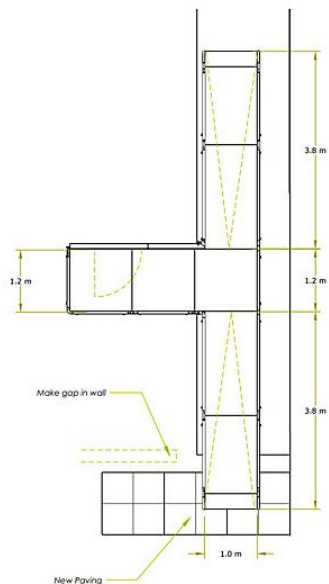
SERVICE PACKAGE

Supply & Installation

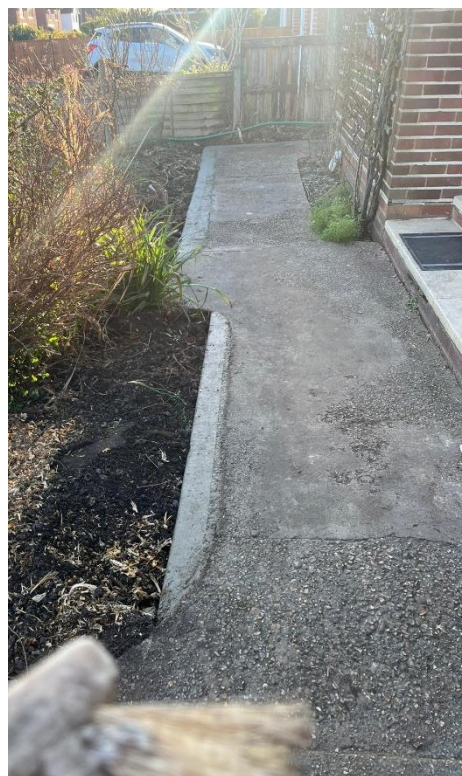
CAD DRAWINGS:

Our in-house drawing department produced 3D and 2D drawings for the project based on measurements taken by our in-house site surveyor.

The illustrations depict the new path's layout and the ramp configuration.



GROUNDWORKS:



END RESULT:

The accomplished tasks included:

- Groundworks.
- Installation of a new uPVC single-fold door.
- Construction of a new concrete path.
- Successful installation of a standard Rapid Ramp at the rear of the property.

INCLUDED RAMP FEATURES:

- Standard Handrail - This handrail system provides users with consistent support.
- Trombone Ends - Added to the ends of a Rapid Ramp to prevent clothes from catching.
- Mesh Platform - The self-draining mesh allows water to pass through, preventing surface water accumulation.
- Standard Colour - Black is the default handrail colour. Handrails are powder-coated for a durable finish that surpasses traditional paint.
- Telescopic Legs - Adjustable legs to accommodate varying threshold heights.

