



Glossop Job Centre

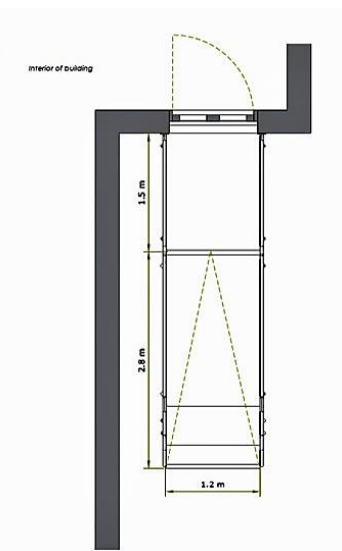
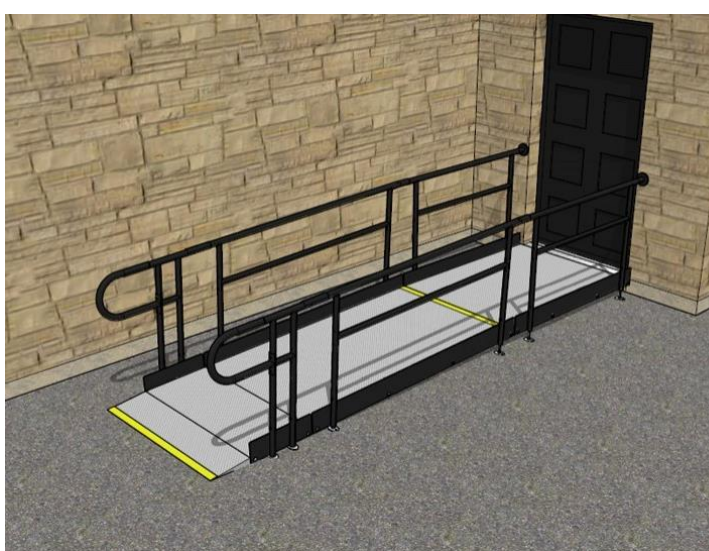
REQUIREMENT:

The client required a ramp installed over the weekend from the main entrance ahead of Monday's reopening.

DESIGN PHASE:

Our in-house design team produced a detailed 3D model and 2D plan within 24 hours, providing the customer with comprehensive visualisations of the project.

APPLICATION
Public Building
LOCATION
Glossop, Derbyshire
SYSTEM
Modular Ramp
SERVICE PACKAGE
Supply & Installation



INSTALLATION:

The fitters completed the ramp in just a few hours despite unexpected light snow.

Unlike traditional concrete, which would have required several days to cure, our ramp was immediately ready for use after being fitted.

By working outside standard hours, we handed over on time with no disruption to the centre's weekday opening.

FEATURES INCLUDED:

- Slip-resistant Mesh Platform - A multi-directional walkway with self-draining steel mesh and a galvanised finish.
- Looped Trombone Ends - Prevents clothes from snagging at the ends.
- Standard Colour: Black - Powder-coated black finish for greater durability than traditional paint.
- Adjustable Telescopic Legs - Adaptable to various threshold heights.
- Standard Handrail - This handrail system ensures that users always have a support to hold onto.
- Slip-Resistant Yellow Tread - A safety feature designed to help those with impaired vision identify the system's nose and any level changes.

