



CASE STUDY: **Conquest Hospital**

**PROJECT BACKGROUND:** As pressure continues to build on the UK's health service, Conquest Hospital's Emergency Department urgently needed to transform their current staff welfare area with additional space, achievable with a modular extension.

The design included a canteen space, toilets, shower rooms, storage areas and lockers for NHS staff.

**REQUIREMENT:** External developments included an accompanying ramp to overcome the exterior door threshold.

The works needed to be achieved within a quick turnaround time and with minimal disruption to the daily running of the department.

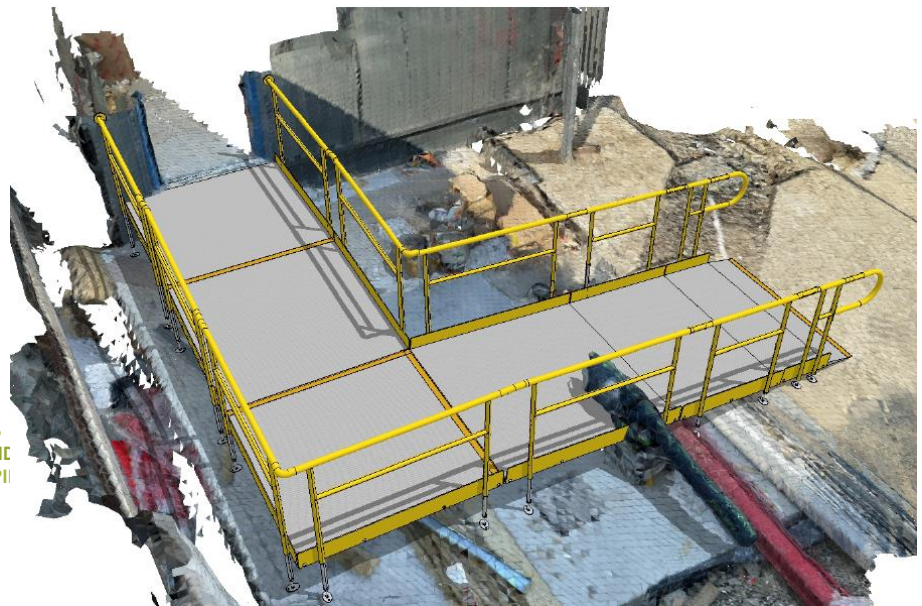
**SITE SURVEY & DRAWINGS:** We responded rapidly with a site survey soon after the initial enquiry.

This project benefitted from the Lidar scanning technology used by our site surveyors.

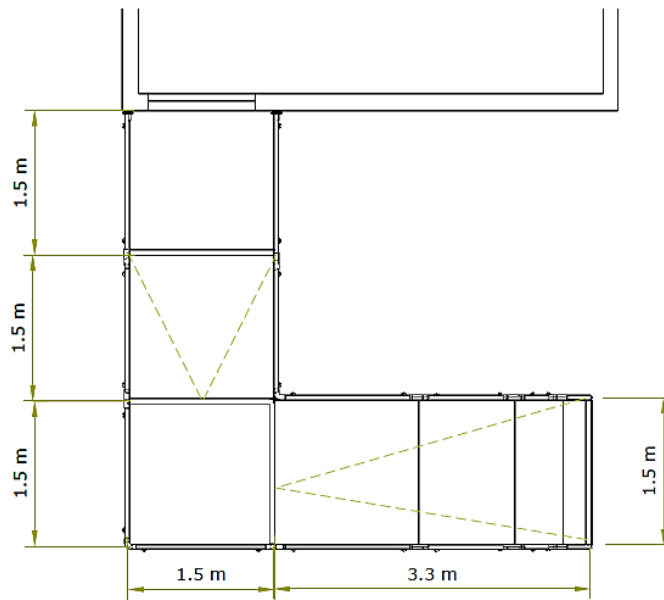
The machine scanned and plotted the heights and widths of the objects in view, including different floor levels.

Our in-house designer then created a 3D visual of the ramp on top of the lidar model, ensuring to draw around any obstructions.

- Application:** Healthcare
- Location:** St Leonards-on-Sea, East Sussex
- System:** Standard Modular Ramp
- Service Package:** Supply & Installation



PLAN



**END RESULT:** Once the extension was near completion, the ramp was fitted in an L shape configuration within a day, minimizing disruption.

#### FEATURES INCLUDED:

- Standard Handrail - this handrail system ensures users always have support to hold onto.
- Trombone Ends - these are added to the ends of a Rapid Ramp to prevent clothes catching.
- Mesh Platform - the self-draining mesh allows water to pass through rather than collect on the surface.
- Powder Coated Finish – rails are coated with thermosetting powder to provide a non-conductive, non-slip and scratch resistant surface.
- Telescopic Legs - these can be adjusted to accommodate different threshold heights.

#### EXTRA FEATURES INCLUDED:

- Yellow Powdercoated Handrails – yellow is one of the easiest colours to see because of its ability to reflect light.
- Yellow Tread - this is a safety feature designed to help those with impaired vision identify the nose of the ramp and any level changes.







TEL: 01424 714646  
EMAIL: [SALES@RAPIDRAMP.CO.UK](mailto:SALES@RAPIDRAMP.CO.UK)

Hours:  
Open 8am - 5pm, Monday to Friday

Address:  
10 Menzies Road, Ponswood Industrial Estate, St Leonards on Sea, East Sussex TN38 9BB

Do you require modular ramps  
and steps?

Contact our sales team