



## CASE STUDY: **Heigham Water Treatment Works**

### **CUSTOM COLOURED RAMPS & STEPS FOR A MODULAR OFFICE**

**REQUIREMENT:** A modular building company was tasked with installing a new regional office for a treatment works site, with wheelchair and step access to match.

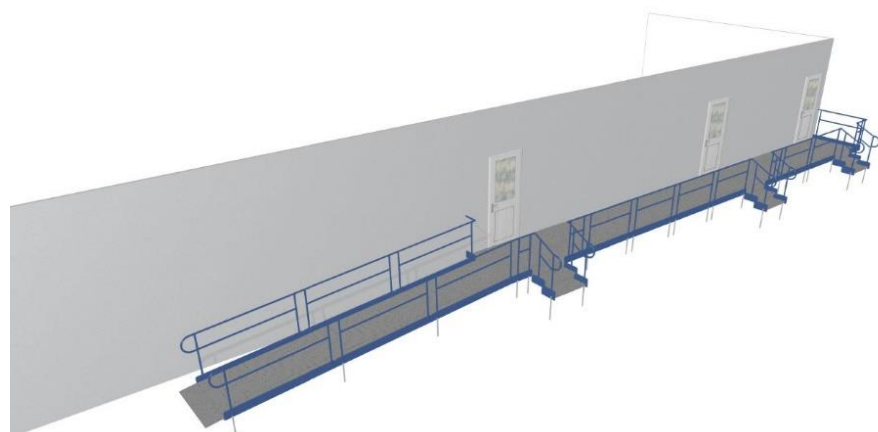
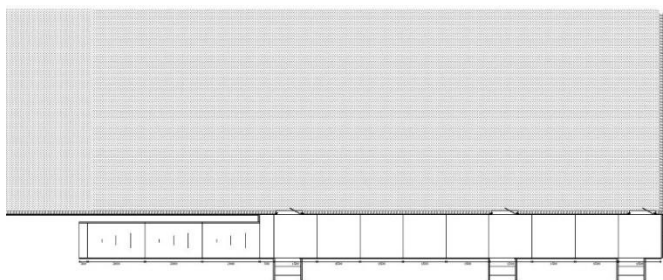
**ADDITIONAL INFORMATION:** We created CAD and technical drawings based on designs provided by the company.

**Application:** Modular Building

**Location:** Norwich, Norfolk

**System:** Standard Ramp System

**Service Package:** Supply & Install







**END RESULT:** Our installers fitted the Rapid Ramp with three step units as shown.

The system was powder-coated blue to match the company's corporate colour.

#### **FEATURES INCLUDED:**

- Trombone Ends - these are added to the ends of a Rapid Ramp to prevent clothes catching.
- Telescopic Legs - these can be adjusted to accommodate different threshold heights.
- Mesh Platform - the self-draining mesh allows water to pass through rather than collect on the surface.
- Standard Handrail - this handrail system is designed to be grasped by the hand, to provide stability or support.

#### **EXTRA FEATURE INCLUDED:**

- Step Unit – an ideal addition to any ramp installation, providing the access needed for able-bodied users. They can also be standalone units, independent of the Rapid Ramp System.
- Blue Powder Coated Finish - ramps are powder coated to create a durable finish that is tougher than conventional paint.





## TWO YEARS AFTER INSTALLATION:

The ramp has endured the test of time, remaining relatively in the same condition from the day of installation.

The blue powder coated finish applied to the rails has avoided fading and continues to be resistant to moulding, rot and shrinking. Also, the walkway shows no sign of rust.

## COMPLETED PHOTO FROM DAY OF INSTALLATION:



## TWO YEARS AFTER INSTALLATION:



**CUSTOMISED POWDER COATING:** Rapid Ramp comes in black as standard however you can choose a colour to match your requirement.

All we require is your RAL colour number. A colour chart can identify this.



“

**Condition is excellent – it looks as good as the day it was installed after 2 years use. I’m most impressed with the quality of your product.**

Logistics Manager

”



TEL: **01424 714646**  
EMAIL: **SALES@RAPIDRAMP.CO.UK**

Hours:  
Open 8am - 5pm, Monday to Friday

Address:  
10 Menzies Road, Ponswood Industrial Estate, St Leonards on Sea, East Sussex TN38 9BB

**Do you have a modular building needing ramps & steps?**

**Contact our sales team**