



## CASE STUDY: Hafan, Modular Housing Scheme Development

**PROJECT BACKGROUND:** This was an award-winning modular housing scheme built on the site of a former gasworks in Grangetown, which the council acquired in 2020.

The development consisted of 48 modular flats for families experiencing homelessness, a community facility building and a separate office for staff to provide on-site support to residents.

**Application:** Modular Buildings

**Location:** Cardiff, Wales

**System:** Fully Compliant Modular Ramps & Steps

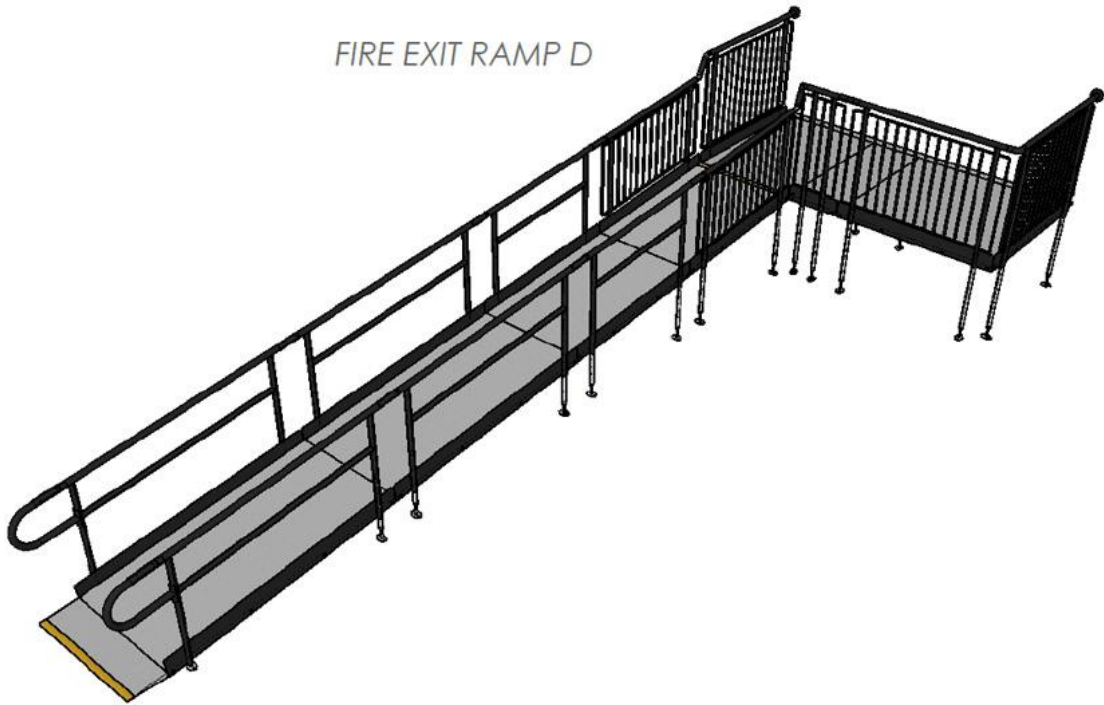
**Service Package:** Supply & Installation

**REQUIREMENT:** The production, transportation, and installation of sustainable modular ramps. Crafted from entirely galvanised steel components, the Rapid Ramp System is a recyclable and reusable, minimising waste and maximising the long-term utility of the items.

The product features a wholly modular design, incorporating interchangeable prefabricated sections that can be assembled, disassembled, and reorganised to accommodate diverse location requirements.

**ADDITIONAL INFORMATION:** Our in-house design team produced CAD drawings of the desired ramp configuration, which were then provided to the client, along with their quotation.

FIRE EXIT RAMP D



BLOCK C,D

Perspective

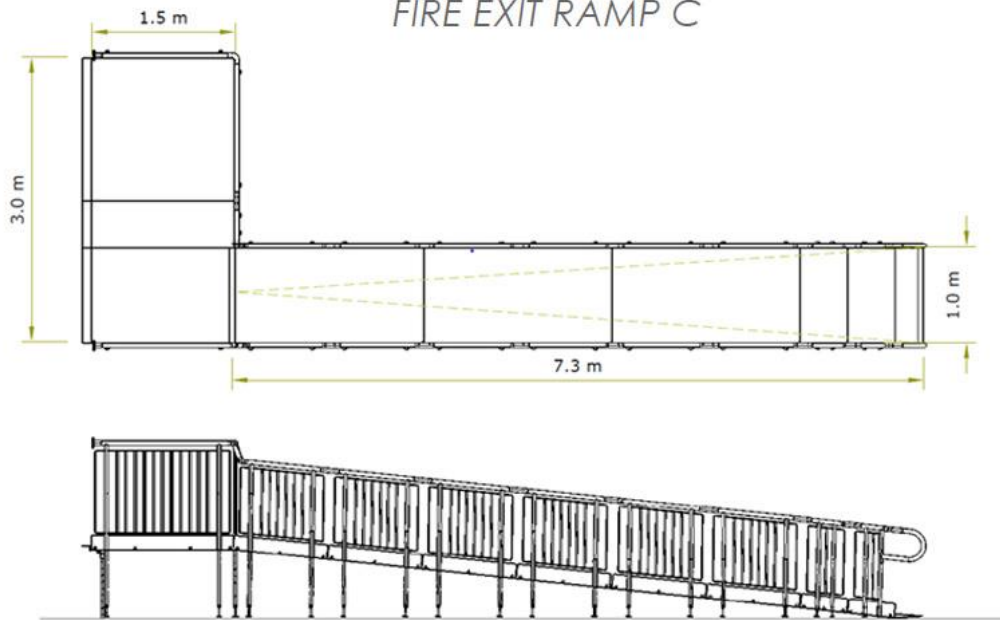


BLOCK A

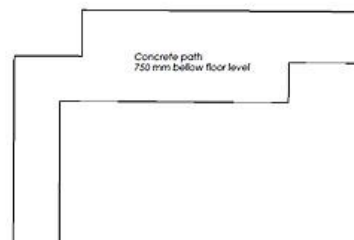
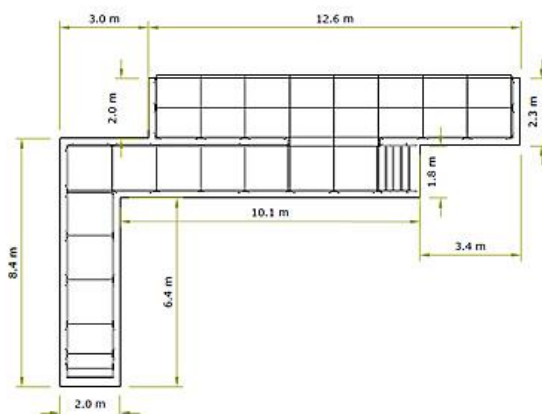
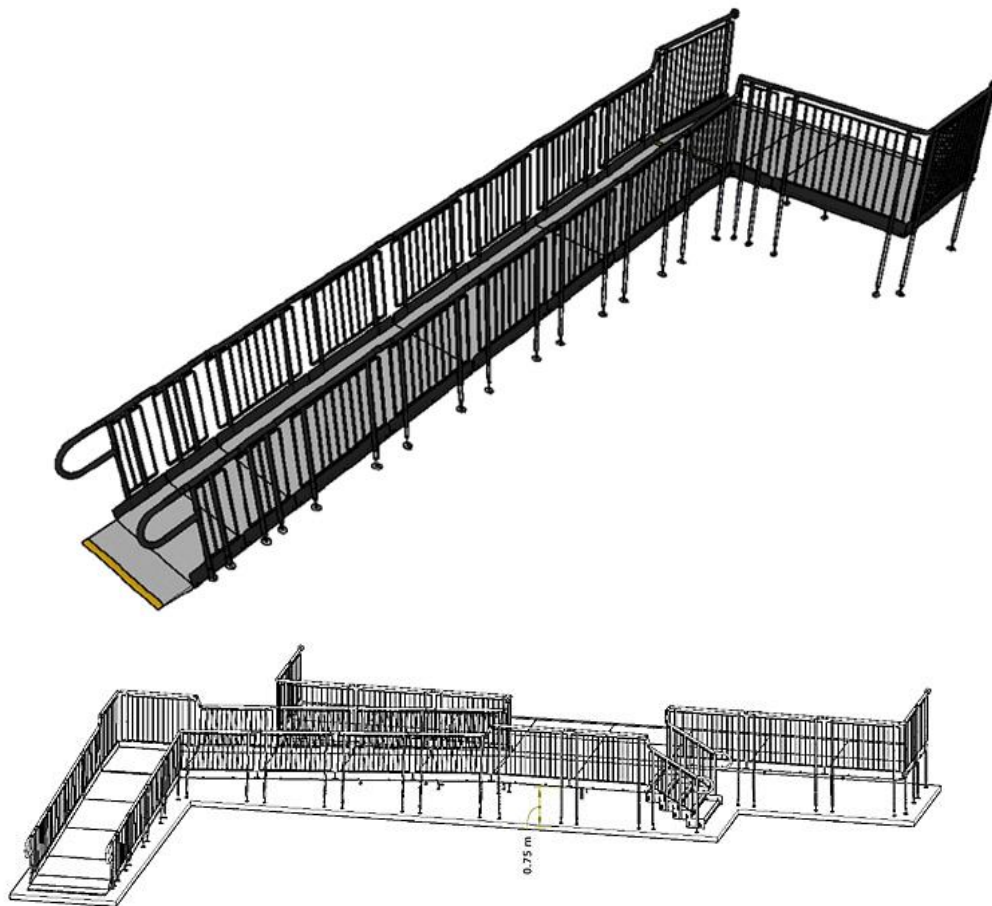
PERSPECTIVE



FIRE EXIT RAMP C



FIRE EXIT RAMP C





**END RESULT:** The installation was accomplished within two weeks. Overall, our team designed, manufactured, and installed seven modular ramps.

With the urgency of the requirement in mind, all systems were promptly dispatched from our warehouse.

Components continue to be readily available from stock within a short turnaround time. Also, the Rapid Ramp comprises of prefabricated sections, facilitating a swift assembly process and a reduced lead time.

Our products have a much faster installation time than traditional materials like concrete, with a minimum drying time of 24 hours. Furthermore, our manufacturing is exclusively carried out in Britain, eliminating dependence on overseas support. All Rapid Ramp products comply with Part K and M of the Building Regulations.

#### **FEATURES INCLUDED:**

- Infill Handrail - This product safeguards against users climbing or falling through gaps.
- Yellow Tread - A safety feature designed to help those with impaired vision identify the system's nose and any level changes.
- Trombone Ends - Installed at the ends of a Rapid Ramp to prevent clothes from snagging.
- Mesh Platform - Self-draining mesh allows water to pass through, preventing surface accumulation.
- Continuous Handrail - Ensures users always have support to hold onto.
- Standard Colour: Black - Our ramps boast a powder-coated black finish, ensuring durability beyond typical paint.

#### **EXTRA FEATURES INCLUDED:**

- Compliant Step Unit - An ideal addition providing access for able-bodied users and capable of standing alone independently of the Rapid Ramp System.
- Standard Underside Mesh - Prevents unauthorised access underneath the ramp, enhancing security.





“ Nobody wants to be living in temporary accommodation but we've had some great feedback from the families staying at the centre, both in terms of quality of the flats and the support they receive from our staff there. And, of course, the beauty of this type of build means we can move the units to other locations across the city in the future, if necessary.

*Cabinet Member for Housing and Communities*

”



TEL: 01424 714646  
EMAIL: [SALES@RAPIDRAMP.CO.UK](mailto:SALES@RAPIDRAMP.CO.UK)

Hours:  
Open 8am - 5pm, Monday to Friday

Address:  
10 Menzies Road, Ponswood Industrial Estate, St Leonards on Sea, East Sussex TN38 9BB

Do you require wheelchair  
ramps and steps?

Contact our sales team