

## Gloucester Royal Hospital

### REQUIREMENT:

Porters were experiencing difficulties manoeuvring hospital beds over the drainage gullies, which presented both a safety risk and an operational challenge.

flat access solutions were required to span the gullies without impeding the effective flow of surface water into the drainage system.

Our GRP walkway and ramps provided ideal, practical solutions, featuring fine drainage holes that allowed water to pass through—preventing puddles and reducing slip hazards. These installations effectively bridged the gullies, enhancing both safety and accessibility.

With a loading capacity of 1,000 kg, they safely supported heavy daily footfall, as well as the movement of hospital equipment such as beds and trolleys, helping to maintain smooth and safe operations in this busy healthcare environment.

### APPLICATION

Healthcare

### LOCATION

Gloucester

### SYSTEM

Modular Walkway & Ramps

### SERVICE PACKAGE

Supply & Install

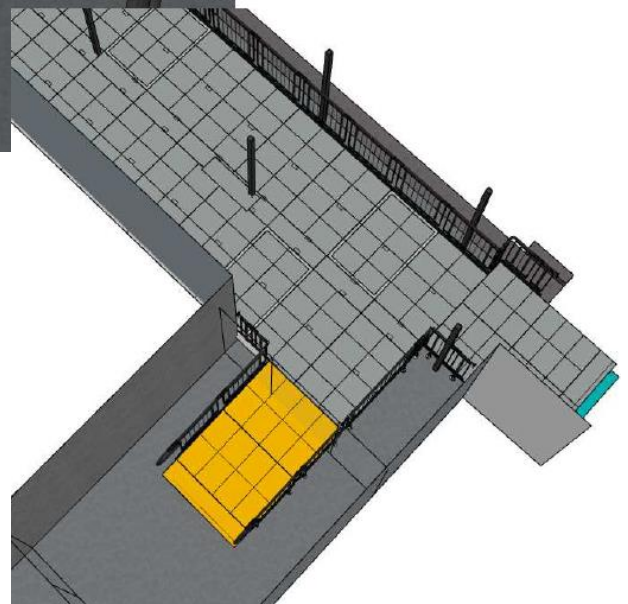
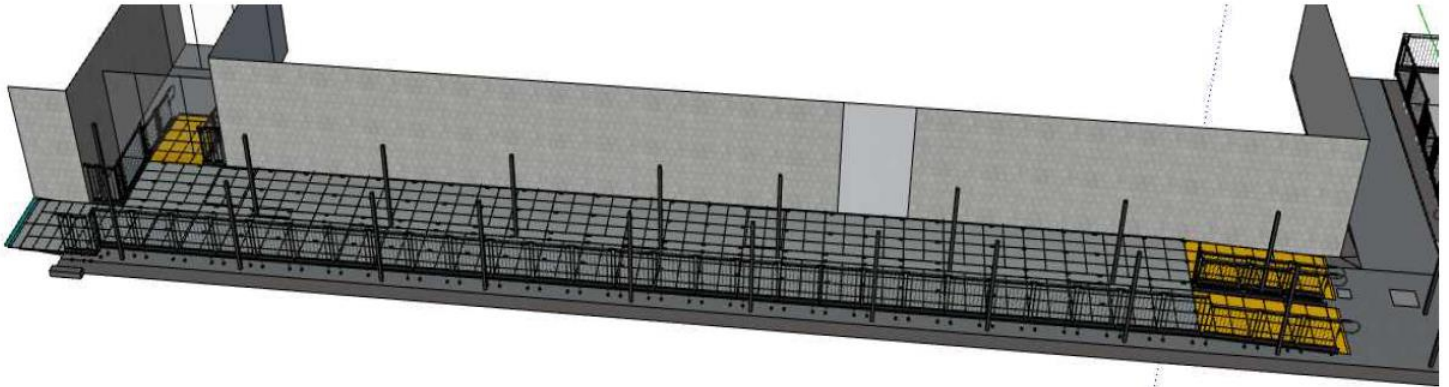


## DESIGN PHASE:

Our in-house design team developed detailed 3D models and 2D plans to clearly illustrate the layout of the walkway and ramps, designed to fit around the canopies, which were scheduled for installation beforehand.

Hatch sections over manholes and drains were incorporated into the walkway designs.

These visualisations, provided alongside the contractor's quotation, offered a clear and accurate preview of the proposed solutions prior to installation.



## INSTALLATION:

Once the canopies were in place, our installation team proceeded to fit the walkway and ramps.

The walkway extended from the hospital entrance to a turning point and continued to the entrance of the discharge lounge, covering a total length of 28 metres.

The installation was successfully completed within two days.

The surfaces were precisely cut on site to accommodate the canopy posts. Aluminium plates with GRP (glass-reinforced plastic) surfacing were custom-shaped around existing fixtures for a seamless fit.

Access hatches were incorporated to maintain unobstructed access to manholes and drainage points beneath the walkway.

Grey and yellow GRP sheets were installed, with yellow chosen for its high visibility and reflective qualities.

The walkway was deliberately designed to stop just short of an existing drain to prevent any interference.

## FEATURES INCLUDED:

- Looped Trombone Ends – Prevent clothing from snagging at handrail ends.
- Slip-resistant Mesh Platform - A multi-directional, self-draining walkway made from galvanised steel mesh.
- Anti-climbing Infill Handrail - Prevents climbing and reduces the risk of falls through open sections.
- Continuous Handrail - Offers uninterrupted support along the walkway.
- Standard Colour: Black - A powder-coated finish provides increased durability over conventional paint.
- Adjustable Telescopic Legs - Accommodate varying threshold heights with ease.
- Slip-Resistant Yellow Stair Nosings - Improve visibility of edges and level changes, especially for visually impaired users.
- GRP (Glass Reinforced Plastic) – A non-corrosive, slip-resistant material suitable for high footfall areas such as hospitals, train stations and airports.

