



CASE STUDY: **Glenfield Hospital**

REQUIREMENT: Two modular rental ramps to provide wheelchair access and match the hire period of the ambulance surge hub.

CAD DRAWING: Drawings were designed in-house and provided to the client with their rental quotation.

Ramp A was designed and installed with a cut section at the point it met with the curb.

Due to the space constraints, ramp B was steeper than the recommended minimum gradient set by the Part M Regulations; however, it was designed as close as possible to fully compliant. Building control took this factor into account when giving sign-off.

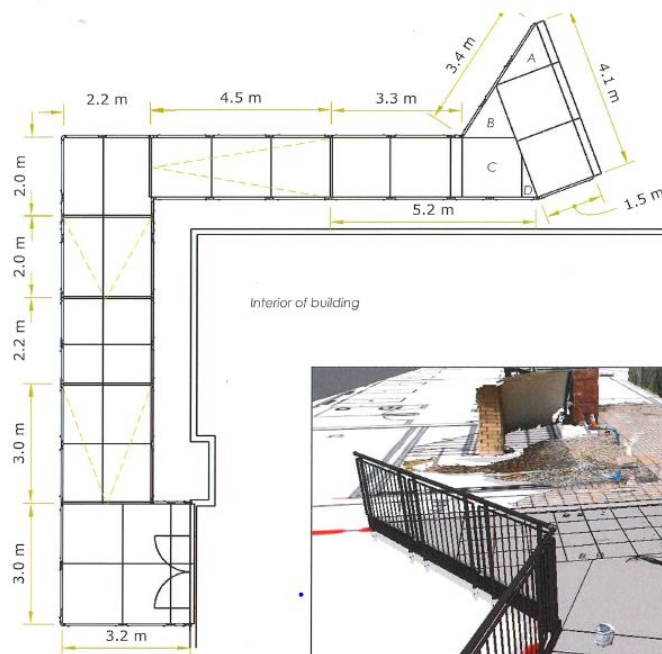
Application: Healthcare

Location: Leicester, East Midlands

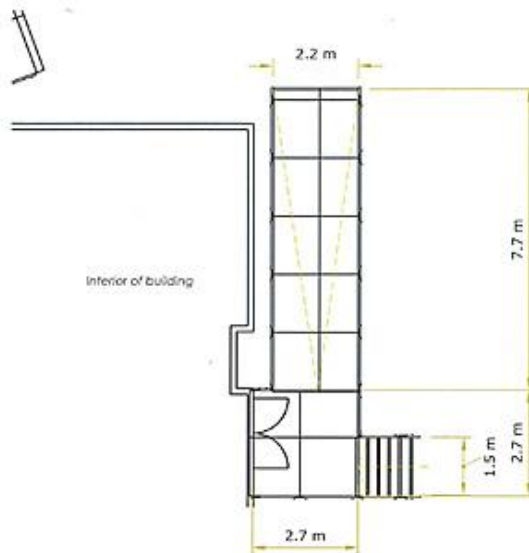
System: Fully Compliant Modular Ramps

Service Package: Ramp Rental

RAMP
A



RAMP
B





END RESULT: The ramps were completed within two days in wet weather. Our installers still finished the job despite the rain pouring in intervals.

The components, including handrails and platforms, are galvanised, a process where a protective coating of zinc is applied to prevent rusting and to kill moss.

Furthermore, components (excluding the platforms and ramp legs) are powder-coated to create a durable, tougher finish than conventional paint.

This process helps our systems withstand impact and perform in our ever-changing British weather conditions.

The ramps have a self-draining mesh platform that prevents moss from growing on the surface and provides slip resistance.

Unlike our Rapid Ramp System, a concrete installation would have been unachievable in these conditions, as the concrete needs a minimum drying time of 24 hours.

Another traditional material, such as wood, can rot when exposed to wet weather, and puddles can form on the surface, creating a dangerous slipping hazard.

The product has an entirely modular design that makes it easy to redesign and relocate to suit different site changes in the future.

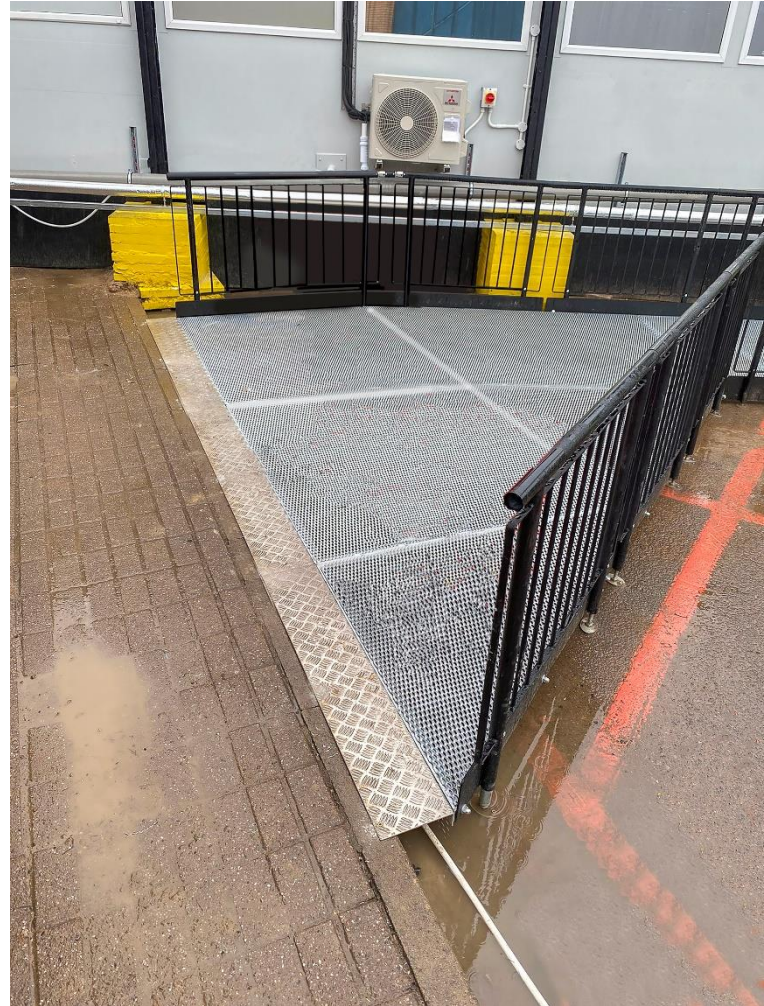
Once the rental duration is concluded, the ramps will be removed and join our hire rotations of stock.

FEATURES INCLUDED:

- Infill Handrail - this product prevents users from climbing or falling through gaps.
- Yellow Tread - this is a safety feature designed to help those with impaired vision identify the nose of the ramp and any level changes.
- Trombone Ends - these are added to the ends of a Rapid Ramp to prevent clothes catching.
- Mesh Platform - the self-draining mesh allows water to pass through rather than collect on the surface.
- Rest Platform – a rest platform at 5 metres is required to allow the user to pause.
- 1100mm High Rail – these handrails attach to any level sections.
- Continuous Handrail - this handrail system ensures users always have support to hold onto.

EXTRA FEATURE INCLUDED:

- Compliant Step Unit - an ideal addition to any ramp installation, providing the access needed for able-bodied users. They can also be stand-alone units, independent of the Rapid Ramp System.



THE EXPERTS IN MODULAR RAMPS

TEL: **01424 714646**
EMAIL: **SALES@RAPIDRAMP.CO.UK**

Hours:
Open 8am - 5pm, Monday to Friday

Address:
10 Menzies Road, Ponswood Industrial Estate, St Leonards on Sea, East Sussex TN38 9BB

**Do you require wheelchair
ramps and steps?**

Contact our sales team