



CASE STUDY: Fleetbank House

AN EARLY MORNING START FOR INSTALLERS

REQUIREMENT: A fully DDA compliant ramp system to overcome a step to an office block.

ADDITIONAL INFORMATION: The client requested that preferably installation should take place before opening hours.

CAD and technical drawings were designed by our specialist CAD designer in-house along with a quotation.

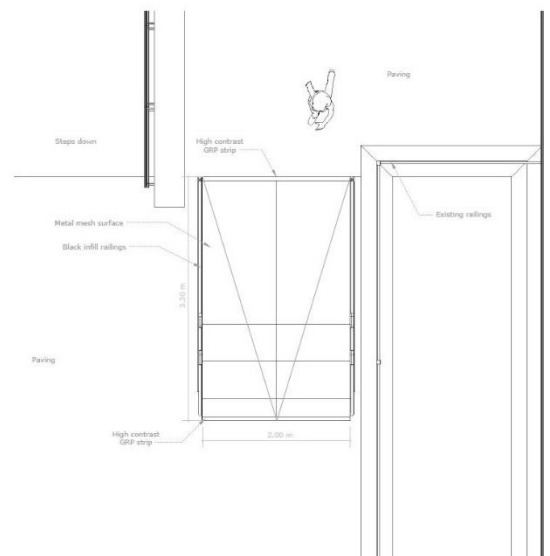
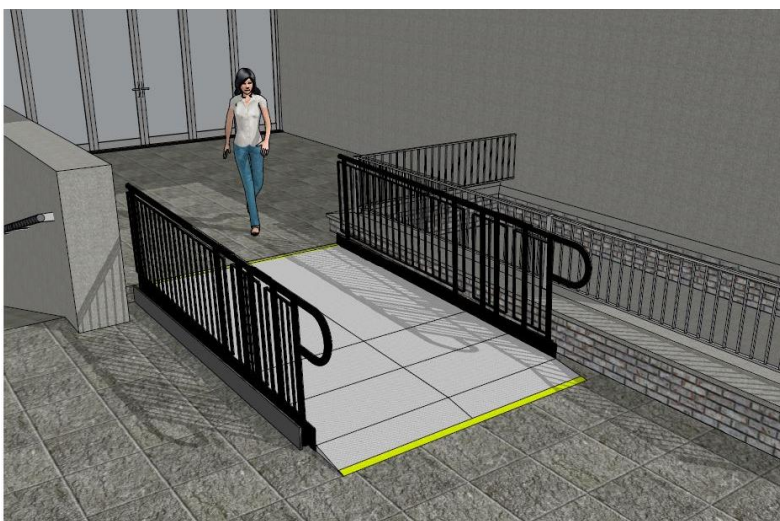
We design the drawings to help customers visualise how a ramp would appear in situ.

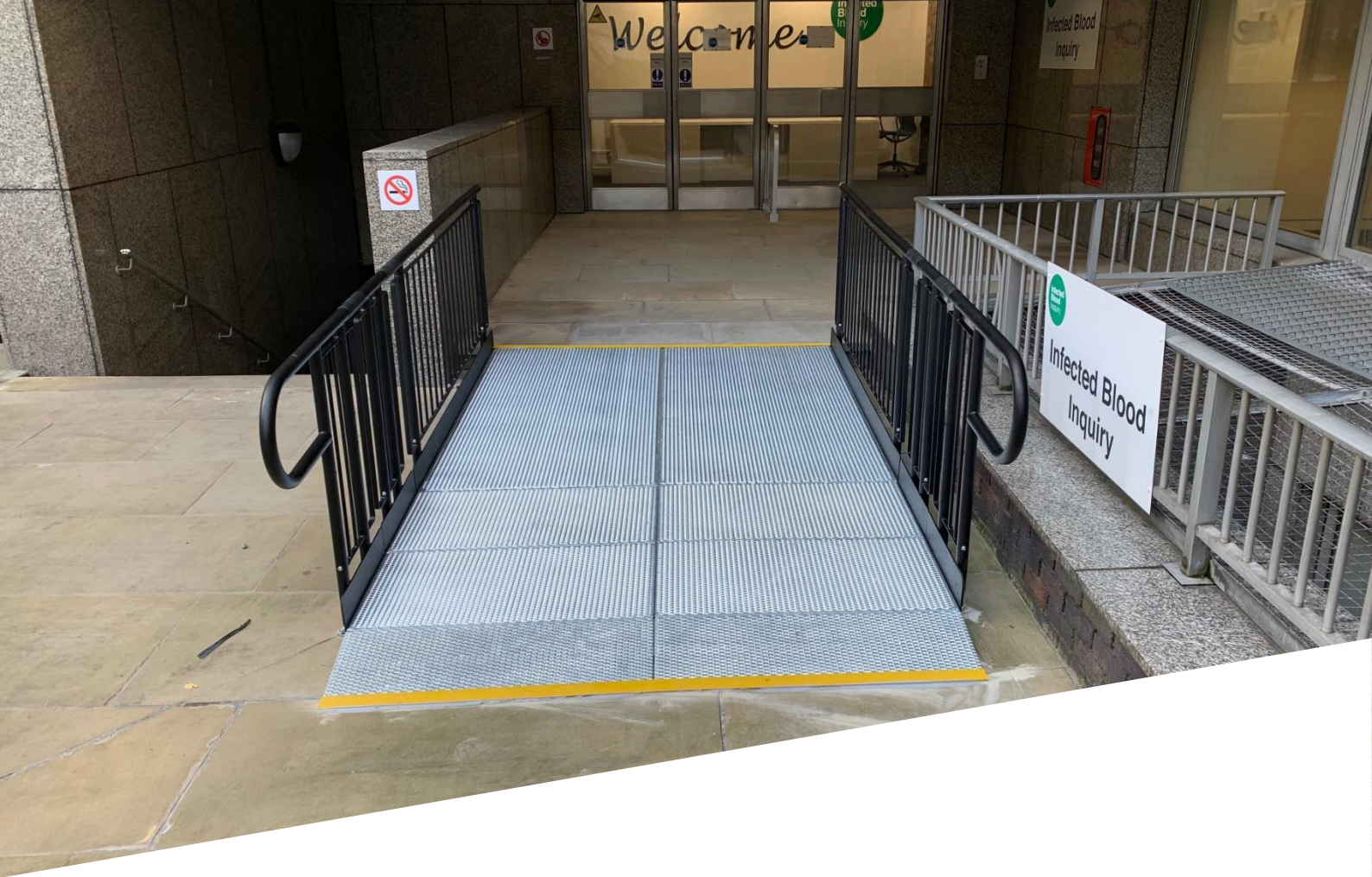
Application: Commercial

Location: London

System: Fully Compliant Ramp System

Service Package: Supply & Install





END RESULT: Our expert team installed a fully compliant Rapid Ramp in the early morning before the office opened.

FEATURES INCLUDED:

- Infill Handrail - this product prevents users from climbing or falling through gaps.
- Yellow Tread - this is a safety feature designed to help those with impaired vision identify the nose of the ramp.
- Trombone Ends - these are added to the ends of a Rapid Ramp to prevent clothes catching.
- Mesh Platform - the self-draining mesh allows water to pass through rather than collect on the surface.

THE COMPLETE RAMP PACKAGE: An all-inclusive, stress-free option which we manage in-house.

This package includes a site survey (if applicable), quotation, CAD and technical drawing, supply, and installation.



TEL: **01424 714646**
EMAIL: **SALES@RAPIDRAMP.CO.UK**

Hours:
Open 8am - 5pm, Monday to Friday
Address:
10 Menzies Road, Ponswood Industrial Estate, St Leonards on Sea, East Sussex TN38 9BB

Do you have a requirement for wheelchair ramps?

Contact our sales team