



CASE STUDY: Covid PCR (Saliva) Test Laboratory, Basingstoke Hospital

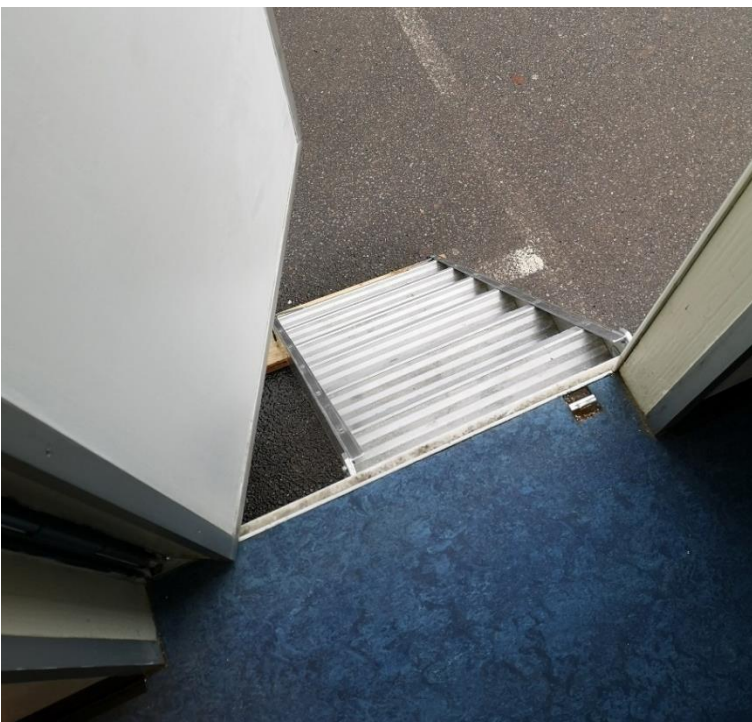
- Background:** The staff test 6-7 thousand saliva pots for covid every three weeks.
- REQUIREMENT:** Replacing the steps to the mobile laboratory. The existing steps were too steep and narrow, with no handrails and platform.

Application: Healthcare

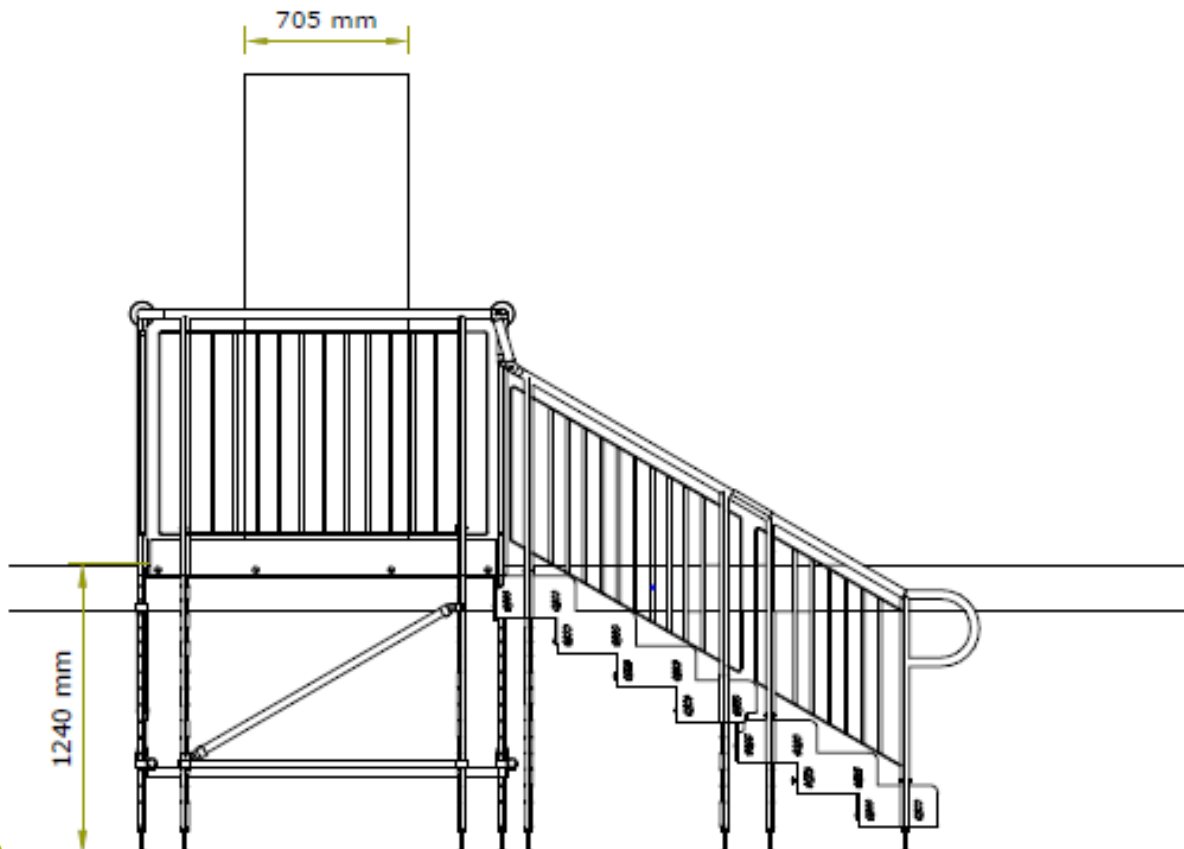
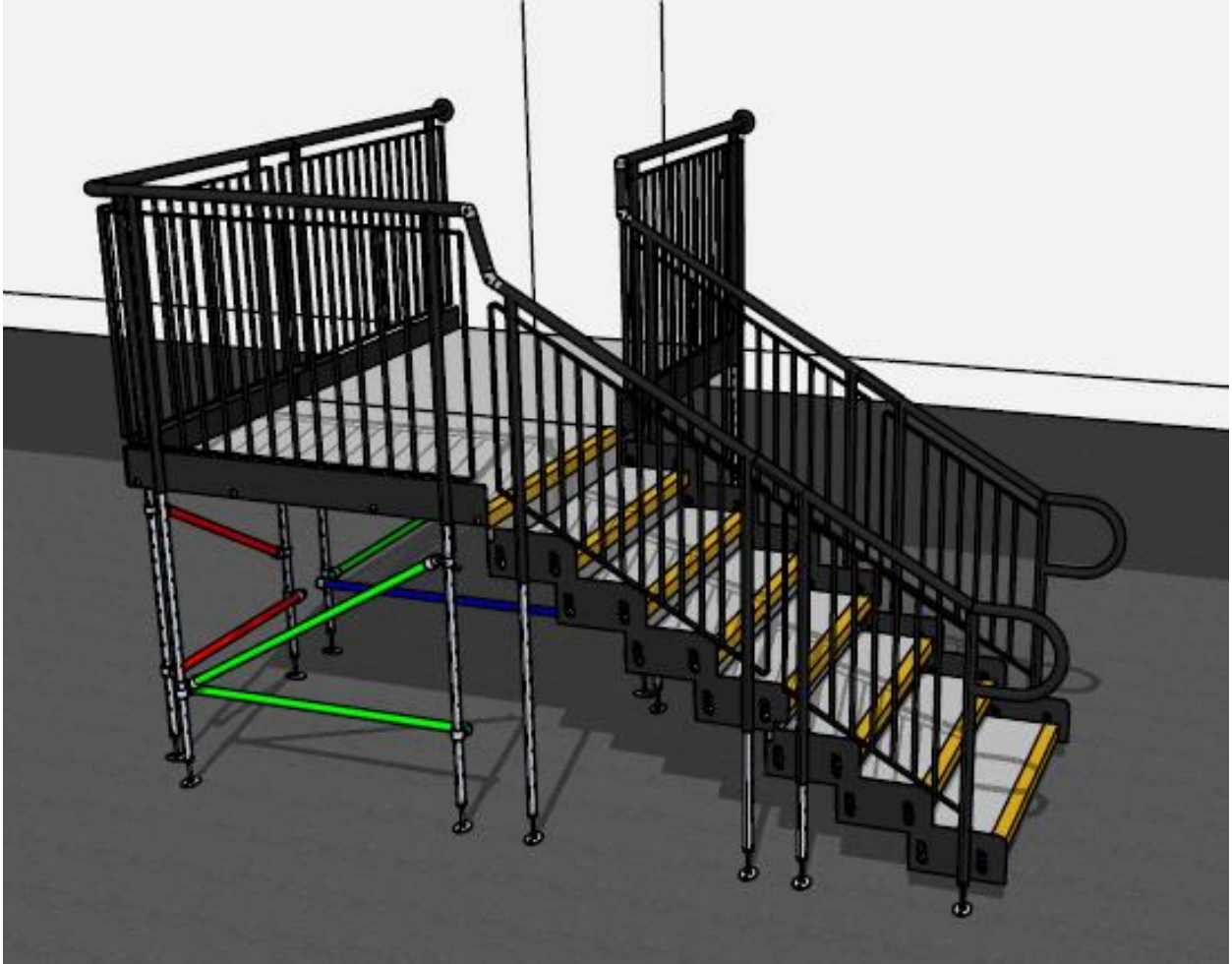
Location: Basingstoke, Hampshire

System: Fully Compliant Steps

Service Package: Ramp Hire



ADDITIONAL INFORMATION: CAD and technical drawings were created by our designer in-house.



END RESULT: We installed fully compliant steps, which included infill handrails and a platform for turning space.

We matched the hire period for the mobile laboratory. Once no longer needed, the steps will be removed by our installation team. Removal is a service included in our [rental package](#).

The steps are fully compliant with [documents M & K of the building regulations](#).

FEATURES INCLUDED:

- Infill Handrail - this product prevents users from climbing or falling through gaps.
- Yellow Tread - this is a safety feature designed to help those with impaired vision identify the nose of each step. Additionally, it helps users distinguish any level changes.
- Trombone Ends - these are added to the ends to prevent clothes catching.
- Mesh Platform - the self-draining mesh allows water to pass through rather than collect on the surface.
- Continuous Handrail - this handrail system ensures users always have support to hold onto.





TEL: **01424 714646**
EMAIL: **SALES@RAPIDRAMP.CO.UK**

Hours:
Open 8am - 5pm, Monday to Friday

Address:
10 Menzies Road, Ponswood Industrial Estate, St Leonards on Sea, East Sussex TN38 9BB

Do you require wheelchair
ramps and steps?

Contact our sales team