



**Application:** Modular Building

**Location:** Southwater, West Sussex

**System:** Standard Step System

**Service Package:** Supply & Install

## CASE STUDY: Caravan, Southwater

### MODULAR CARAVAN STEPS MADE ALL THE DIFFERENCE

**REQUIREMENT:** The gap between the door and brick steps was becoming increasingly difficult for the homeowner (who uses a walking frame) to manage.

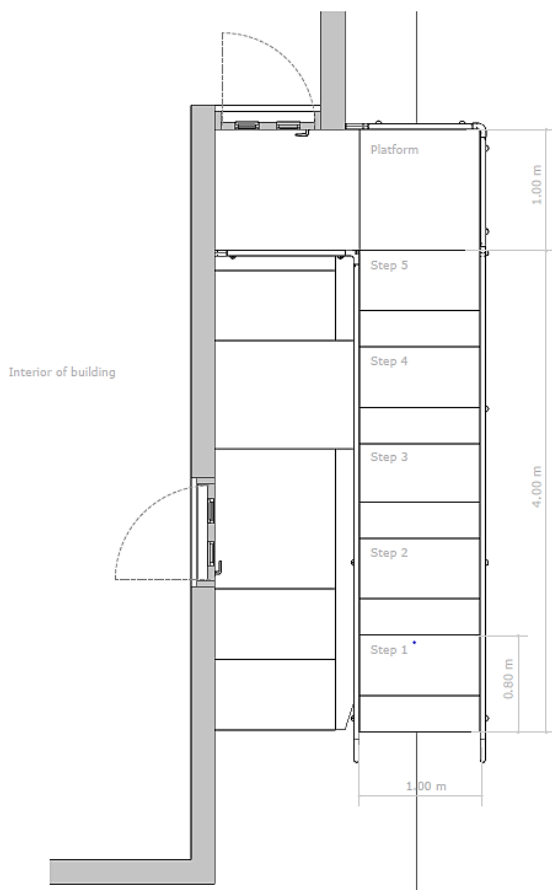
Therefore, new caravan steps capable of reaching the threshold height of the door were needed.

**ADDITIONAL INFORMATION:** The specifier identified modular steps as the best option due to the product's design capabilities.

CAD and technical drawings were designed by our specialist CAD designer in-house, from measurements and photos taken.







**END RESULT:** Modular caravan steps with handrails were installed and ready to use within a day.

The steps were 800mm deep to allow space for user and walking frame.

#### FEATURES INCLUDED:

- Trombone Ends - these are added to the ends of a step system to prevent clothes catching.
- Telescopic Legs - these can be adjusted to accommodate different threshold heights.
- Standard Handrail - this handrail system is designed to be grasped by the hand, to provide stability or support.
- Mesh - self-draining mesh allows water to pass through rather than collect on the surface.
- Extra Deep Steps - design to accommodate the user and walking frame.

#### THE BENEFITS OF PREFABRICATED STEP UNITS

Like caravans & mobile homes, our modular steps are prefabricated systems, carrying benefits including:

- **A fast construction time** - Ramp installations are typically completed within a 1 to 2-day turnaround time. Components are manufactured and stored in-house.
- **Easy to remove** - Once no longer required, steps can be disassembled within a few hours.
- **Design and build flexibility** - Ramps can be re-designed and re-configured to suit different sized areas.
- **Cost-effective** - Our access steps have a life span of over 25 years with no maintenance costs.
- **Environmental benefits** - Ramp components can be reused under our ramp recycling scheme.



TEL: 01424 714646  
EMAIL: SALES@RAPIDRAMP.CO.UK

Hours:  
Open 8am - 5pm, Monday to Friday

Address:  
10 Menzies Road, Ponswood Industrial Estate, St Leonards on Sea, East Sussex TN38 9BB

Do you have a client requiring  
access steps to their home?

Contact our sales team