



## CASE STUDY: **Campus & Co Shop, Hastings**

### **CREATING AN ACCESSIBLE SHOP ENTRANCE**

**REQUIREMENT:** A modular ramp to the shop.

The system needed to support various weight loads including shopping trolleys, wheelchairs, and pedestrians.

**ADDITIONAL INFORMATION:** CAD and technical drawings were designed by our specialist designer in-house.

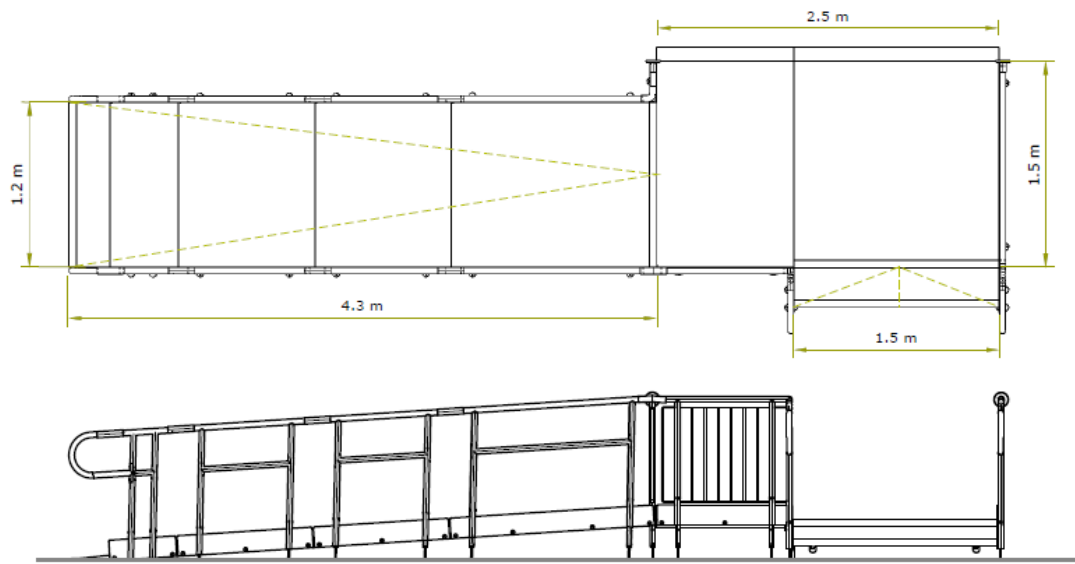
**Application:** Public Building

**Location:** Hastings, East Sussex

**System:** Standard Modular Ramp

**Service Package:** Supply & Install





**END RESULT:** A modular ramp with a 1:15 gradient was installed with a few hours.

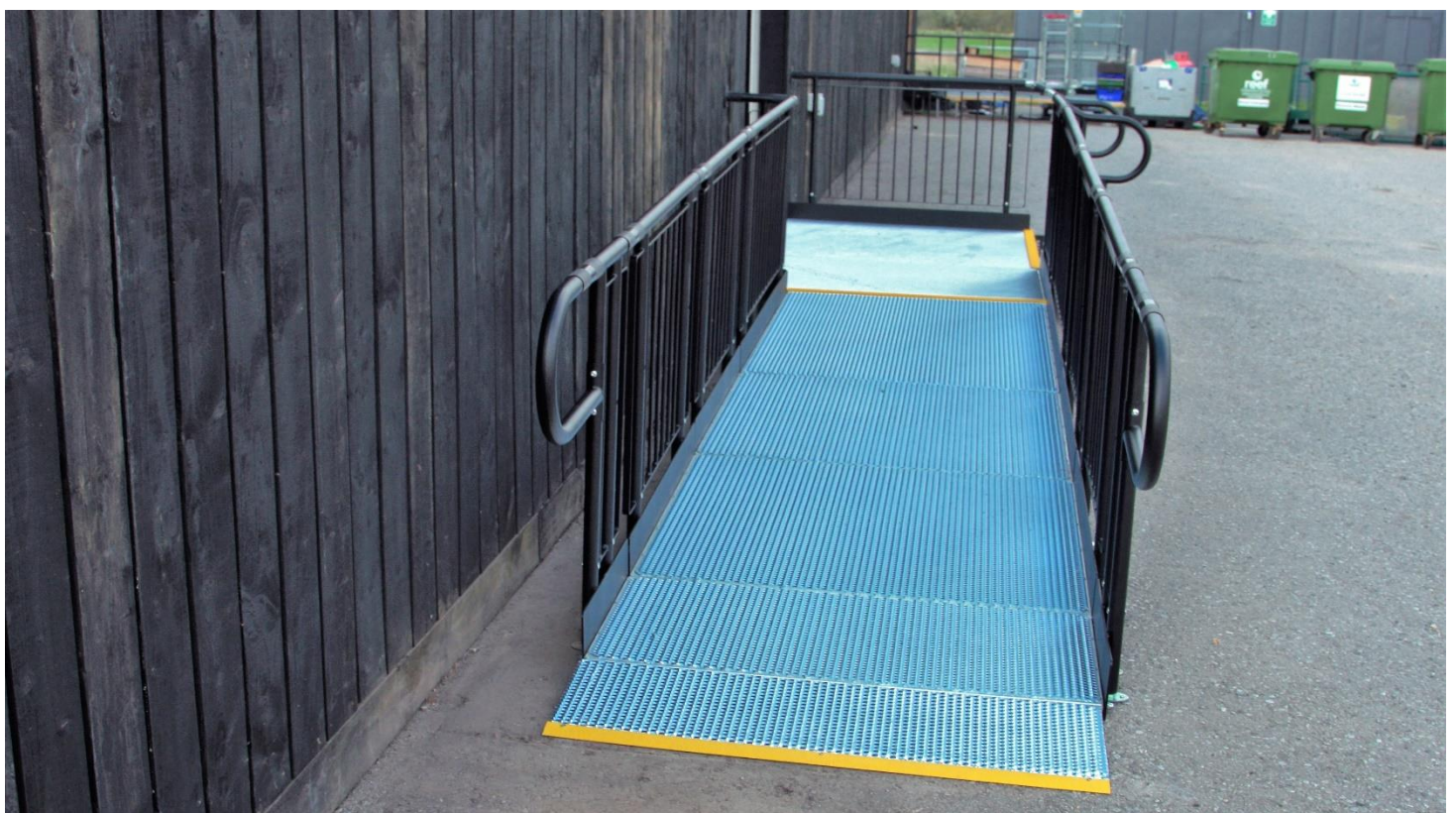
The rapid installation allowed the shop to reopen within a quick turnaround time.

#### FEATURES INCLUDED:

- Mesh Platform - self-draining mesh allows water to pass through rather than collect on the surface.
- Trombone Ends - these are added to the ends of a Rapid Ramp to prevent clothes catching.
- Telescopic Legs - these can be adjusted to accommodate different threshold heights.
- Mesh Platform - the self-draining mesh allows water to pass through rather than collect on the surface.

#### EXTRA FEATURES INCLUDED:

- Infill Handrail - this product prevents users from climbing or falling through gaps.
- Yellow Tread - this is a safety feature designed to help those with impaired vision identify the nose of the ramp and helps users distinguish any level changes.





## > DO SHOPS HAVE TO PROVIDE DISABLED ACCESS?

The Equalities Act requires service providers (such as shops) to make reasonable adjustments for disabled people by removing barriers that could stop individuals from gaining access to goods and services. [>Further information on the law around disabled access to shops<](#)



TEL: **01424 714646**  
EMAIL: **SALES@RAPIDRAMP.CO.UK**

Hours:  
Open 8am - 5pm, Monday to Friday  
Address:  
10 Menzies Road, Ponswood Industrial Estate, St Leonards on Sea, East Sussex TN38 9BB

**Do you require wheelchair ramps and steps?**

**Contact our sales team**