



CASE STUDY: CARLISLE PARK PAVILION, MORPETH

A PEDESTRIAN WALKWAY TO THE PARK PAVILION

BACKGROUND: The Pavilion was being refurbished, ready to be re-open as a new café to help increase tourism to the town.

Plans included creating a new terrace at the front, a small rear extension, and a portable office/store at the back.

REQUIREMENT: A modular ramp to the terrace for pedestrian and wheelchair use.

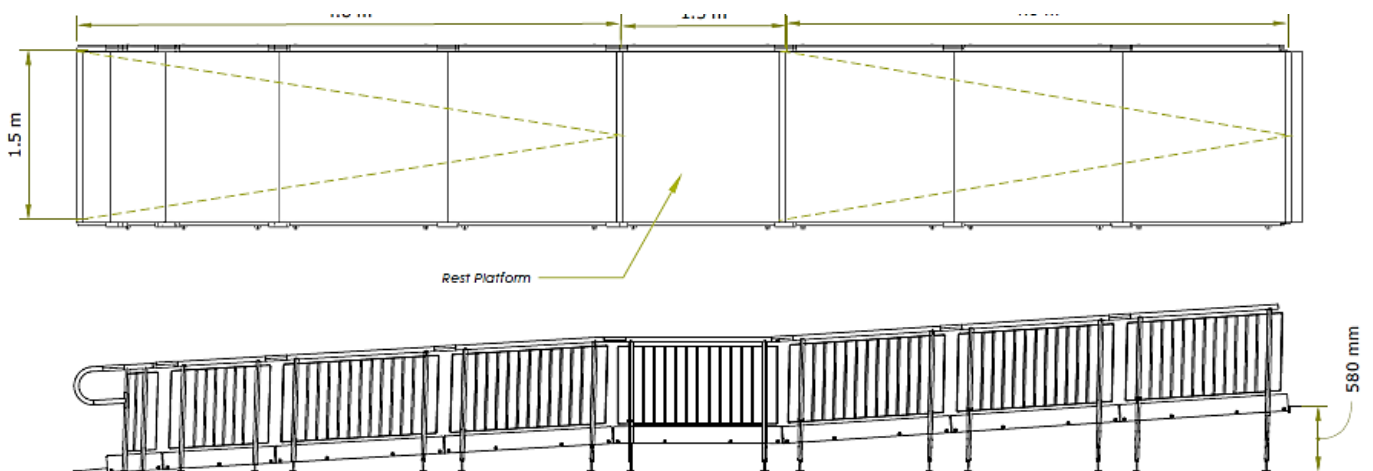
ADDITIONAL INFORMATION: CAD and technical drawings were designed in-house and based on-site measurements taken.

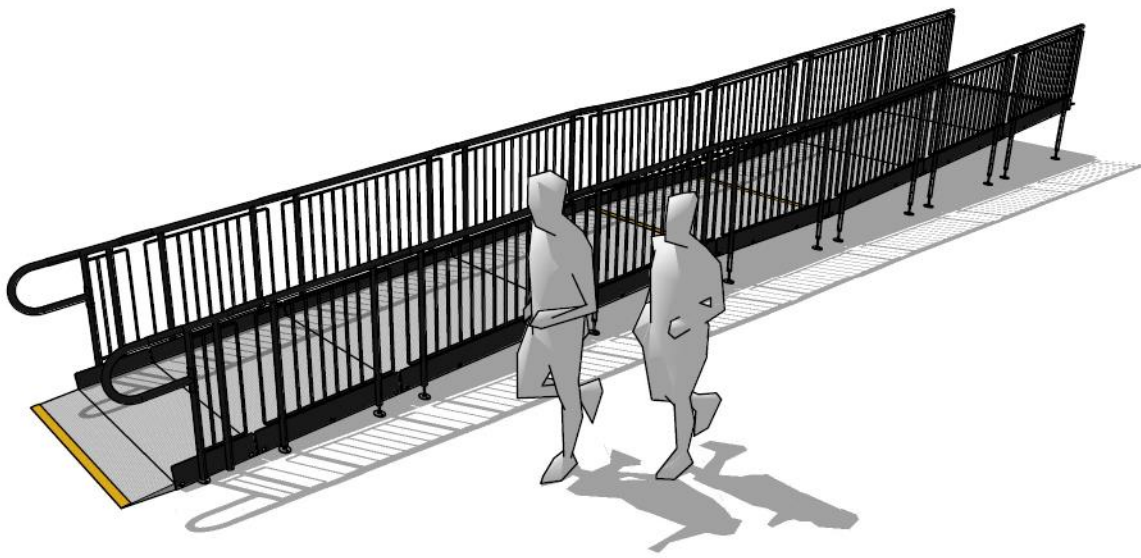
Application: Public Building

Location: Morpeth, Northumberland

System: Standard Modular Ramp

Service Package: Supply & Install





END RESULT: Our installers fitted a Rapid Ramp, which included a pedestrian walkway with a loading capacity of 1,000kgs. It is designed to safely support the weight of varies public traffic, including pedestrians, prams, wheelchairs, and mobility scooters.

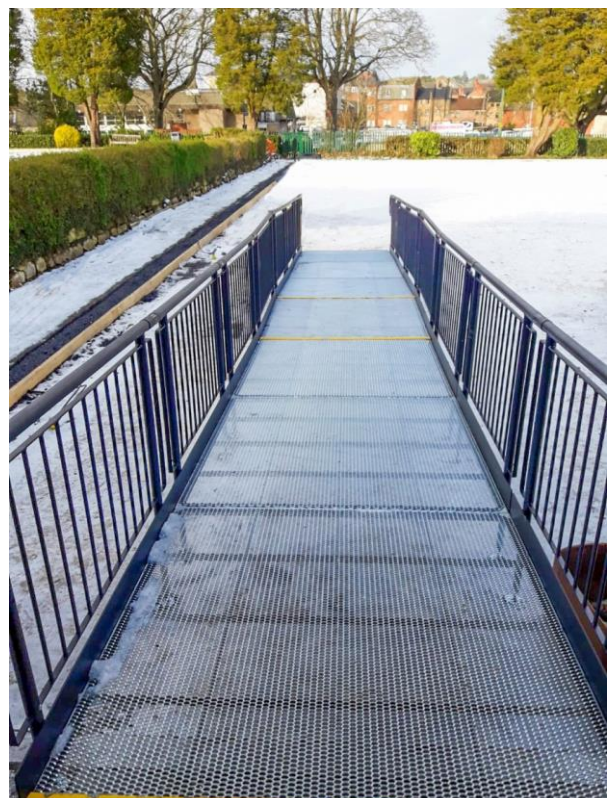
The installation was completed within a few hours on a snowy late evening.

FEATURES INCLUDED:

- Mesh Platform - self-draining mesh allows water to pass through rather than collect on the surface.
- Trombone Ends - these are added to the ends of a Rapid Ramp to prevent clothes catching.
- Telescopic Legs - these can be adjusted to accommodate threshold heights.
- Continuous Handrail - this handrail system ensures users always have a support to hold onto.
- Standard Colour Black - ramps are powder-coated black to create a hard finish that is tougher than conventional paint.

EXTRA FEATURES INCLUDED:

- Infill Handrail - this product prevents users from climbing or falling through gaps.
- Yellow Tread - this is a safety feature designed to help those with impaired vision identify the nose of the ramp and helps users distinguish any level changes.





CONCRETE VS METAL RAMP INSTALLATIONS

Unfortunately, newly poured concrete must be protected from freezing for the first 24 to 48 hours and requires drying time before use.

Therefore, concrete installations are heavily reliant on good weather conditions, and cannot be completed in snow or frozen temperatures.

Unlike concrete, our modular metal ramps can be installed in most weather conditions, including snow. Plus, the product is manufactured from galvanised steel.

Galvanising is a process where a protective coating of zinc is applied to prevent rusting and to kill moss.



TEL: **01424 714646**
EMAIL: **SALES@RAPIDRAMP.CO.UK**

Hours:
Open 8am - 5pm, Monday to Friday
Address:
10 Menzies Road, Ponswood Industrial Estate, St Leonards on Sea, East Sussex TN38 9BB

Do you require ramp access to a public building?

Contact our sales team