



CASE STUDY: **Abingdon and Witney College**

MODULAR ACCESS TO THE DANCE STUDIO

REQUIREMENT: A modular building scheduled to be assembled in the summer holiday, which must be accessible for students, staff, and visitors of all abilities.

The chosen ramp system would need to comply with the Disability Discrimination Act and Part M of the Building Regulations.

Application: Education

Location: Witney, Oxfordshire

System: Fully Compliant Ramp System

Service Package: Supply & Install

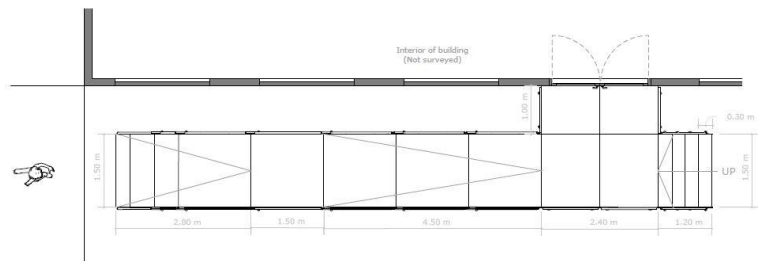
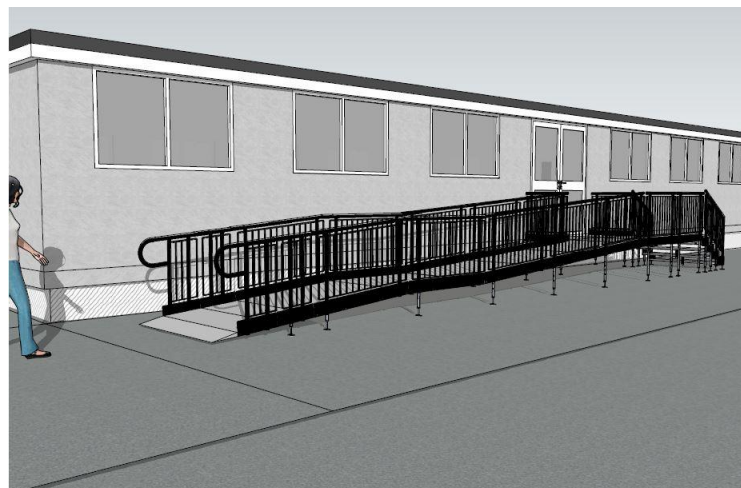


TEL: 01424 714646
EMAIL: SALES@RAPIDRAMP.CO.UK
WEBSITE: WWW.RAPIDRAMP.CO.UK



ADDITIONAL INFORMATION: CAD and technical drawings were designed by our specialist CAD designer in-house along with a quotation.

We design the drawings to help customers visualise how a ramp would appear in situ.





END RESULT: Once the building had been assembled, we installed a fully compliant Rapid Ramp with step unit from the front entrance.

Our skilled team concluded all work within the summer holiday, as requested.

FEATURES INCLUDED:

- Yellow Tread - this is a safety feature designed to help those with impaired vision identify the nose of the ramp or step. Additionally, it helps users distinguish any level changes.
- Infill Handrail - if the ramp height exceeds 380mm, Infill handrail is required to prevent users from climbing or falling through gaps.
- 1100mm High Rail - these handrails attach to any level sections.
- Mesh Platform - the self-draining mesh allows water to pass through rather than collect on the surface. Minimum width: 1500mm.
- Rest Platform - a rest platform at 5 metres is required to allow the user to pause.
- Trombone Ends - these are added to the ends of a Rapid Ramp to prevent clothes catching.
- Standard Continuous Handrail - this handrail system ensures users always have support to hold onto.

EXTRA FEATURE INCLUDED:

- Step Unit – an ideal addition to any ramp installation, providing the access needed for able-bodied users. They can also be stand-alone units, independent of the Rapid Ramp System.

FLEXIBLE INSTALLATIONS:

Installations are flexible and planned around the specific needs of each school.

Often installers will work during the holidays to accommodate around the teaching timetable.

Alternatively, installations during term time hours are just as achievable, and our team are fully DBS checked (formerly CRB), which covers working with children and vulnerable adults.



TEL: **01424 714646**
EMAIL: **SALES@RAPIDRAMP.CO.UK**

Hours:
Open 8am - 5pm, Monday to Friday

Address:
10 Menzies Road, Ponswood Industrial Estate, St Leonards on Sea, East Sussex TN38 9BB

**Do you have a college
requiring access?**

Contact our sales team